



[Go to Product page](#)

Datasheet for ABIN190857

## anti-NPY2R antibody (Internal Region)

### 2 Images

#### Overview

Quantity:	100 µg
Target:	NPY2R
Binding Specificity:	Internal Region
Reactivity:	Rat
Host:	Goat
Clonality:	Polyclonal
Conjugate:	This NPY2R antibody is un-conjugated
Application:	Western Blotting (WB), ELISA

#### Product Details

Purpose:	Npy2r (mouse)
Immunogen:	Peptide with sequence C-KAKKNLEVKKNN, from the internal region of the protein sequence according to NP_032757.1.
Sequence:	KAKKNLEVKK NN
Isotype:	IgG
Specificity:	Pease note this antibody was designed using the Mouse sequence NP_032757.1, which differs by 1 amino acid from the Human sequence NP_000901.1.
Cross-Reactivity:	Dog, Human, Mouse, Rat
Purification:	Purified from goat serum by ammonium sulphate precipitation followed by antigen affinity chromatography using the immunizing peptide.

## Product Details

---

Grade: Verified

## Target Details

---

Target: NPY2R

Alternative Name: Npy2r ([NPY2R Products](#))

Background: Npy2r, neuropeptide Y receptor Y2, MGC124241, MGC124242, MGC124244, NPY-Y2 receptor

Gene ID: 4887, 18167, 66024

NCBI Accession: [NP\\_032757](#)

Pathways: [cAMP Metabolic Process](#), [Synaptic Membrane](#), [Feeding Behaviour](#)

## Application Details

---

Application Notes: Western Blot: Approx 40+45 kDa band observed in Rat Brain lysates (calculated MW of 42.6 kDa according to NP\_032757.1). Recommended concentration: 0.1-0.3 µg/mL.  
Peptide ELISA: antibody detection limit dilution 1:4000.

Comment: **Immunoprecipitation:** A customer successfully used this product for IP of Human Y2R, but the Human Y2R could not be detected in WB by this antibody.

Restrictions: For Research Use only

## Handling

---

Format: Liquid

Concentration: 0.5 mg/mL

Buffer: Supplied at 0.5 mg/mL in Tris saline, 0.02 % sodium azide, pH 7.3 with 0.5 % bovine serum albumin.

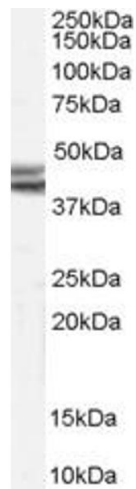
Preservative: Sodium azide

Precaution of Use: This product contains Sodium azide: a POISONOUS AND HAZARDOUS SUBSTANCE which should be handled by trained staff only.

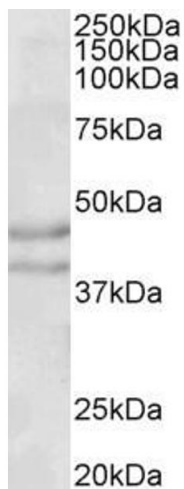
Handling Advice: Minimize freezing and thawing.

Storage: -20 °C

Storage Comment: Aliquot and store at -20°C, with minimal freeze/thawing. A working aliquot may be refrigerated at 4°C for a few weeks and still remain viable.



**Image 1.** ABIN190857 (0.1µg/ml) staining of Rat Brain lysate (35µg protein in RIPA buffer). Primary incubation was 1 hour. Detected by chemiluminescence.



### Western Blotting

**Image 2.** ABIN190857 (0.1µg/ml) staining of Rat Brain lysate (35µg protein in RIPA buffer). Primary incubation was 1 hour. Detected by chemiluminescence.