

Datasheet for ABIN190867

anti-LARP1B antibody (Internal Region)**3** Images[Go to Product page](#)

Overview

Quantity:	100 µg
Target:	LARP1B
Binding Specificity:	Internal Region
Reactivity:	Human
Host:	Goat
Clonality:	Polyclonal
Conjugate:	This LARP1B antibody is un-conjugated
Application:	ELISA, Immunofluorescence (IF), Flow Cytometry (FACS)

Product Details

Purpose:	LARP2 / LARP1B
Immunogen:	C-QGVLHIPKKDLTDE
Sequence:	QGVLHIPKKD LTDE
Isotype:	IgG
Specificity:	This antibody is expected to recognise isoform 1 (NP_060548.2) only.
Cross-Reactivity:	Human
Purification:	Purified from goat serum by ammonium sulphate precipitation followed by antigen affinity chromatography using the immunizing peptide.
Grade:	Verified

Target Details

Target:	LARP1B
Alternative Name:	LARP2 (LARP1B Products)
Background:	LARP2, La ribonucleoprotein domain family, member 2, DKFZp686L13217, MGC117277, MGC75174, La ribonucleoprotein domain family member 2
Gene ID:	55132
NCBI Accession:	NP_060548

Application Details

Application Notes:	Peptide ELISA: antibody detection limit dilution 1:128000.
Comment:	Immunofluorescence: Strong expression of the protein seen in the cytoplasm of A431 cells. Recommended concentration: 10µg/ml. Flow Cytometry: Flow cytometric analysis of HepG2 cells. Recommended concentration: 10ug/ml.
Restrictions:	For Research Use only

Handling

Format:	Liquid
Concentration:	0.5 mg/mL
Buffer:	Supplied at 0.5 mg/mL in Tris saline, 0.02 % sodium azide, pH 7.3 with 0.5 % bovine serum albumin.
Preservative:	Sodium azide
Precaution of Use:	This product contains Sodium azide: a POISONOUS AND HAZARDOUS SUBSTANCE which should be handled by trained staff only.
Handling Advice:	Minimize freezing and thawing.
Storage:	-20 °C
Storage Comment:	Aliquot and store at -20°C, with minimal freeze/thawing. A working aliquot may be refrigerated at 4°C for a few weeks and still remain viable.

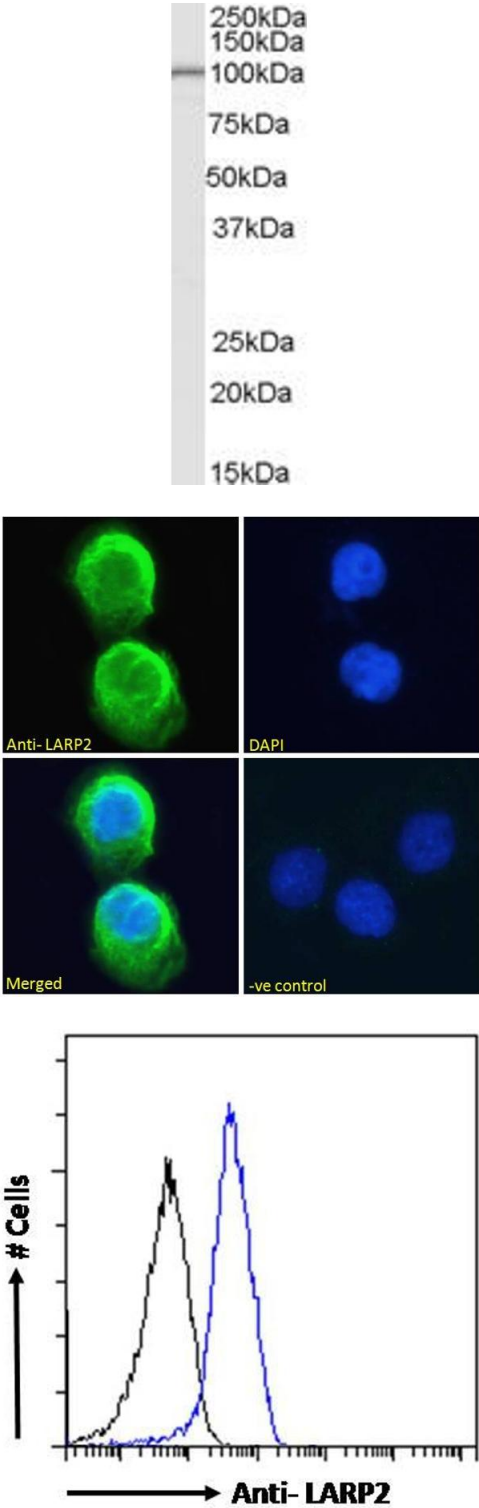


Image 1. ABIN190867 (0.1µg/ml) staining of Human Testis lysate (35µg protein in RIPA buffer). Primary incubation was 1 hour. Detected by chemiluminescence.

Immunofluorescence

Image 2. ABIN190867 Immunofluorescence analysis of paraformaldehyde fixed A431 cells, permeabilized with 0.15% Triton. Primary incubation 1hr (10ug/ml) followed by Alexa Fluor 488 secondary antibody (2ug/ml), showing cytoplasmic staining. The nuclear stain is DAPI (blue). Negative control: Unimmunized goat IgG (10ug/ml) followed by Alexa Fluor 488 secondary antibody (2ug/ml).

Flow Cytometry

Image 3. ABIN190867 Flow cytometric analysis of paraformaldehyde fixed HepG2 cells (blue line), permeabilized with 0.5% Triton. Primary incubation overnight (10ug/ml) followed by Alexa Fluor 488 secondary antibody (1ug/ml). IgG control: Unimmunized goat IgG (black li