

Datasheet for ABIN190872

## anti-SLC25A47 antibody (Internal Region)



[Go to Product page](#)

### 1 Image

#### Overview

Quantity:	100 µg
Target:	SLC25A47
Binding Specificity:	Internal Region
Reactivity:	Human
Host:	Goat
Clonality:	Polyclonal
Conjugate:	This SLC25A47 antibody is un-conjugated
Application:	ELISA, Immunohistochemistry (IHC)

#### Product Details

Purpose:	C14orf68
Immunogen:	Peptide with sequence C-RYGNPDAKPTKAD, from the internal region of the protein sequence according to NP_997000.2.
Sequence:	RYGNPDAKPT KAD
Isotype:	IgG
Cross-Reactivity:	Human
Purification:	Purified from goat serum by ammonium sulphate precipitation followed by antigen affinity chromatography using the immunizing peptide.
Grade:	Verified

## Target Details

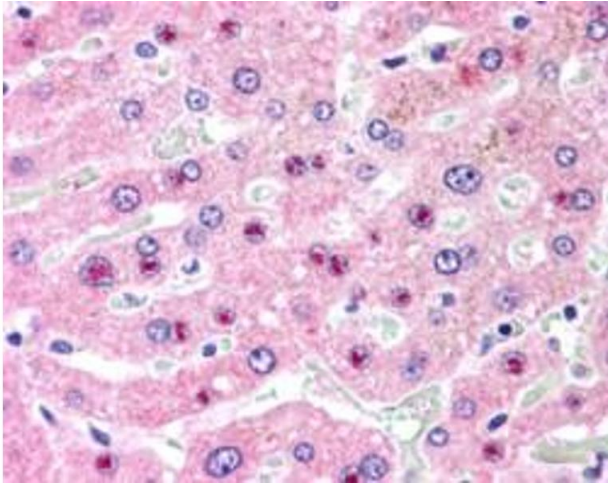
Target:	SLC25A47
Alternative Name:	C14orf68 ( <a href="#">SLC25A47 Products</a> )
Background:	C14orf68, chromosome 14 open reading frame 68 , HDMCP, HMFN1655 , hepatocellular carcinoma-downregulated mitochondrial carrier protein
Gene ID:	283600
NCBI Accession:	<a href="#">NP_997000</a>

## Application Details

Application Notes:	<p>Immunohistochemistry: In paraffin embedded Human Liver shows staining of nucleoli in select hepatocytes. Recommended concentration, 2.5 µg/mL.</p> <p>Western Blot: Preliminary experiments gave an approx 45 kDa band in Human Liver lysates after 0.3 µg/mL antibody staining. Please note that currently we cannot find an explanation in the literature for the band we observe given the calculated size of 33.4k</p> <p>Peptide ELISA: antibody detection limit dilution 1:16000.</p>
Restrictions:	For Research Use only

## Handling

Format:	Liquid
Concentration:	0.5 mg/mL
Buffer:	Supplied at 0.5 mg/mL in Tris saline, 0.02 % sodium azide, pH 7.3 with 0.5 % bovine serum albumin.
Preservative:	Sodium azide
Precaution of Use:	This product contains Sodium azide: a POISONOUS AND HAZARDOUS SUBSTANCE which should be handled by trained staff only.
Handling Advice:	Minimize freezing and thawing.
Storage:	-20 °C
Storage Comment:	Aliquot and store at -20°C, with minimal freeze/thawing. A working aliquot may be refrigerated at 4°C for a few weeks and still remain viable.



#### Immunohistochemistry

**Image 1.** ABIN190872 (2.5µg/ml) staining of paraffin embedded Human Liver. Steamed antigen retrieval with citrate buffer pH 6, AP-staining.