

Datasheet for ABIN190877 **anti-UBASH3A antibody (Internal Region)**

[Go to Product page](#)

1 Image

Overview

Quantity:	100 µg
Target:	UBASH3A
Binding Specificity:	Internal Region
Reactivity:	Human
Host:	Goat
Clonality:	Polyclonal
Conjugate:	This UBASH3A antibody is un-conjugated
Application:	ELISA, Immunohistochemistry (IHC)

Product Details

Purpose:	STS2 / TULA (internal)
Immunogen:	Peptide with sequence QQCSTPDGKYRPPD, from the internal region of the protein sequence according to NP_061834.1, NP_001001895.1.
Sequence:	QQCSTPDGKY YRPD
Isotype:	IgG
Specificity:	This antibody is expected to recognize both reported isoforms (NP_061834.1 and NP_001001895.1).
Cross-Reactivity:	Dog, Human
Purification:	Purified from goat serum by ammonium sulphate precipitation followed by antigen affinity chromatography using the immunizing peptide.

Product Details

Grade: Verified

Target Details

Target: UBASH3A

Alternative Name: UBASH3A ([UBASH3A Products](#))

Background: TULA , STS2 CBL-interacting protein 4, UBASH3A, ubiquitin associated and SH3 domain containing, A , T-cell ubiquitin ligand protein, Suppressor of T-cell receptor signaling 2, CLIP4

Gene ID: 53347

NCBI Accession: [NP_061834](#), [NP_001001895](#)

Application Details

Application Notes: Immunohistochemistry: In paraffin embedded Human Spleen shows cytoplasm staining of T-cells eccentrically gathered around an artery. Recommended concentration: 2.5 µg/mL.
Western Blot: Preliminary experiments gave an approx 48 kDa band in lysates of B-cell line Daudi after 0.1 µg/mL antibody staining. Please note that currently we cannot find an explanation in the literature for the band we observe given the calculated size
Peptide ELISA: antibody detection limit dilution 1:64000.

Restrictions: For Research Use only

Handling

Format: Liquid

Concentration: 0.5 mg/mL

Buffer: Supplied at 0.5 mg/mL in Tris saline, 0.02 % sodium azide, pH 7.3 with 0.5 % bovine serum albumin.

Preservative: Sodium azide

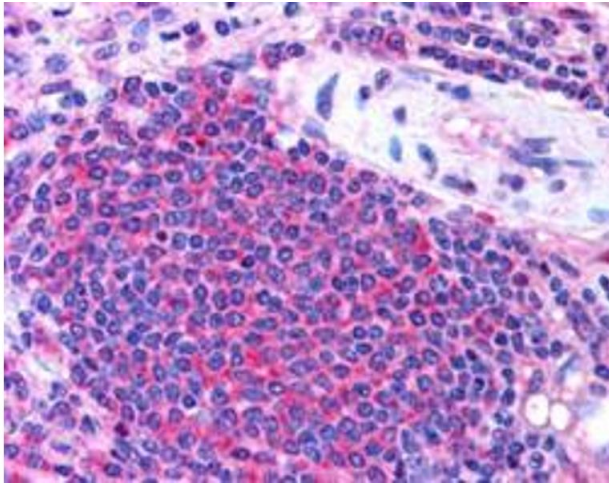
Precaution of Use: This product contains Sodium azide: a POISONOUS AND HAZARDOUS SUBSTANCE which should be handled by trained staff only.

Handling Advice: Minimize freezing and thawing.

Storage: -20 °C

Storage Comment: Aliquot and store at -20°C, with minimal freeze/thawing. A working aliquot may be refrigerated

at 4°C for a few weeks and still remain viable.



Immunohistochemistry

Image 1. ABIN190877 (2.5µg/ml) staining of paraffin embedded Human Spleen. Steamed antigen retrieval with citrate buffer pH 6, AP-staining.