

Datasheet for ABIN190878

**anti-TBC1D4 antibody (Internal Region)**[Go to Product page](#)**2** Images

## Overview

Quantity:	100 µg
Target:	TBC1D4
Binding Specificity:	Internal Region
Reactivity:	Human
Host:	Goat
Clonality:	Polyclonal
Conjugate:	This TBC1D4 antibody is un-conjugated
Application:	ELISA, Western Blotting (WB), Immunohistochemistry (IHC)

## Product Details

Purpose:	AS160 / TBC1D4
Immunogen:	Peptide with sequence C-DDPEKIEERKKSK, from the internal region of the protein sequence according to NP_055647.2.
Sequence:	DDPEKIEERK KSK
Isotype:	IgG
Cross-Reactivity:	Dog, Human
Purification:	Purified from goat serum by ammonium sulphate precipitation followed by antigen affinity chromatography using the immunizing peptide.
Grade:	Verified

## Target Details

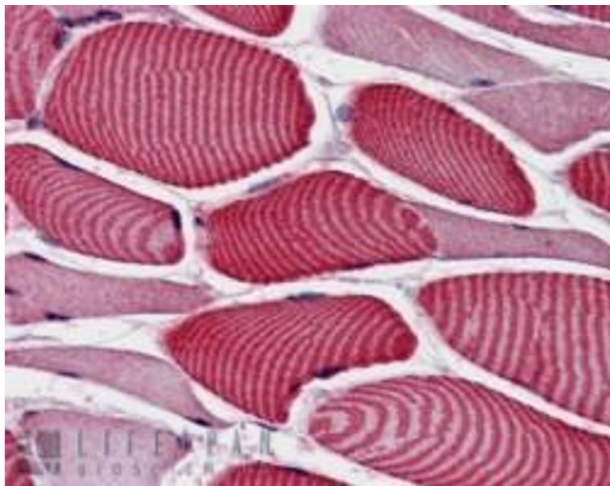
Target:	TBC1D4
Alternative Name:	TBC1D4 ( <a href="#">TBC1D4 Products</a> )
Background:	TBC1D4, AS160, TBC1 domain family, member 4 , RP11-159J2.1, DKFZp779C0666 , Acrg embryonic lethality (mouse) minimal region ortholog, OTTHUMP00000040818, TBC (Tre-2, BUB2, CDC16) domain-containing protein, KIAA0603
Gene ID:	9882
NCBI Accession:	<a href="#">NP_055647</a>

## Application Details

Application Notes:	<p>Immunohistochemistry: In paraffin embedded Human Skeletal Muscle shows striated pattern staining of majority of muscular fibres. Recommended concentration, 3-5 µg/mL.</p> <p>Western Blot: Approx 150 kDa band observed in lysates of cell lines Daudi and MOLT4 (calculated MW of 147 kDa according to NP_055647.2). Recommended concentration: 0.1-0.3 µg/mL.</p> <p>Peptide ELISA: antibody detection limit dilution 1:128000.</p>
Restrictions:	For Research Use only

## Handling

Format:	Liquid
Concentration:	0.5 mg/mL
Buffer:	Supplied at 0.5 mg/mL in Tris saline, 0.02 % sodium azide, pH 7.3 with 0.5 % bovine serum albumin.
Preservative:	Sodium azide
Precaution of Use:	This product contains Sodium azide: a POISONOUS AND HAZARDOUS SUBSTANCE which should be handled by trained staff only.
Handling Advice:	Minimize freezing and thawing.
Storage:	-20 °C
Storage Comment:	Aliquot and store at -20°C, with minimal freeze/thawing. A working aliquot may be refrigerated at 4°C for a few weeks and still remain viable.



#### Immunohistochemistry

**Image 1.** ABIN190878 (3.8µg/ml) staining of paraffin embedded Human Skeletal Muscle. Steamed antigen retrieval with citrate buffer pH 6, AP-staining.



#### Western Blotting

**Image 2.** ABIN190878 (0.1µg/ml) staining of Daudi cell lysate (35µg protein in RIPA buffer). Primary incubation was 1 hour. Detected by chemiluminescence.