

Datasheet for ABIN190893

anti-CRHR1 antibody (AA 250-263)



[Go to Product page](#)

2 Images

1 Publication

Overview

Quantity:	100 µg
Target:	CRHR1
Binding Specificity:	AA 250-263
Reactivity:	Human, Mouse
Host:	Goat
Clonality:	Polyclonal
Conjugate:	This CRHR1 antibody is un-conjugated
Application:	ELISA, Western Blotting (WB), Immunohistochemistry (IHC), Immunofluorescence (IF)

Product Details

Purpose:	CRHR1 / CRF-R (aa 250 - 263)
Immunogen:	Peptide with sequence KLYYDNEKCWFGKR, from the internal region of the protein sequence according to NP_004373.2.
Sequence:	KLYYDNEKCW FGKR
Isotype:	IgG
Cross-Reactivity:	Cow, Dog, Human, Mouse, Rat, Sheep
Purification:	Purified from goat serum by ammonium sulphate precipitation followed by antigen affinity chromatography using the immunizing peptide.
Grade:	Verified

Target Details

Target:	CRHR1
Alternative Name:	CRHR1 (CRHR1 Products)
Background:	CRHR1, CRF-R, corticotropin releasing hormone receptor 1 , CRF1, CRFR1, CRH-R1h, CRHR, CRHR1f , corticotropin releasing hormone receptor variant 1h, seven transmembrane helix receptor
Gene ID:	1394, 12921, 58959
NCBI Accession:	NP_004373
Pathways:	Hormone Transport , cAMP Metabolic Process , Myometrial Relaxation and Contraction , Regulation of Leukocyte Mediated Immunity , Positive Regulation of Immune Effector Process , Feeding Behaviour , Negative Regulation of Transporter Activity

Application Details

Application Notes:	Immunohistochemistry: Paraffin embedded Human Brain (Cortex). Recommended concentration: 5 µg/mL. Western Blot: This antibody has been successfully used in WB on Mouse: Hunt AJ Jr et al, Brain Struct Funct. 2018 Jul;223(6):2685-2698. PMID: 29569009. Peptide ELISA: antibody detection limit dilution 1:1000.
Comment:	Immunofluorescence: Expression of the protein seen in the cytoplasm and vesicles of MCF7 cells. Recommended concentration: 10µg/ml.
Restrictions:	For Research Use only

Handling

Format:	Liquid
Concentration:	0.5 mg/mL
Buffer:	Supplied at 0.5 mg/mL in Tris saline, 0.02 % sodium azide, pH 7.3 with 0.5 % bovine serum albumin.
Preservative:	Sodium azide
Precaution of Use:	This product contains Sodium azide: a POISONOUS AND HAZARDOUS SUBSTANCE which should be handled by trained staff only.
Handling Advice:	Minimize freezing and thawing.

Handling

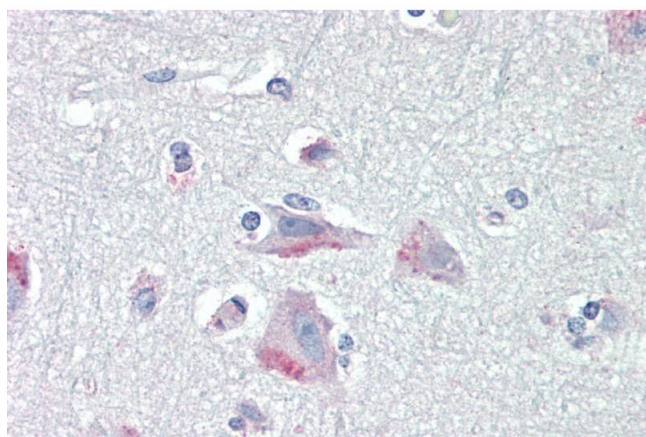
Storage: -20 °C

Storage Comment: Aliquot and store at -20°C, with minimal freeze/thawing. A working aliquot may be refrigerated at 4°C for a few weeks and still remain viable.

Publications

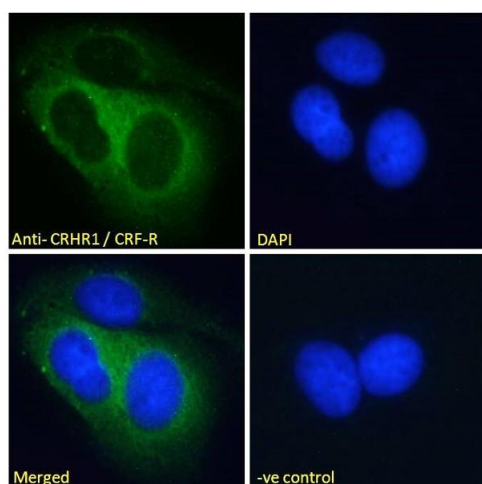
Product cited in: Hunt, Dasgupta, Rajamanickam, Jiang, Beierlein, Chan, Justice: "Paraventricular hypothalamic and amygdalar CRF neurons synapse in the external globus pallidus." in: **Brain structure & function**, Vol. 223, Issue 6, pp. 2685-2698, (2019) ([PubMed](#)).

Images



Immunohistochemistry

Image 1. ABIN190893 (5µg/ml) staining of paraffin embedded Human Cortex. Steamed antigen retrieval with citrate buffer pH 6, AP-staining.



Immunofluorescence

Image 2. ABIN190893 Immunofluorescence analysis of paraformaldehyde fixed MCF7 cells, permeabilized with 0.15% Triton. Primary incubation 1hr (10ug/ml) followed by Alexa Fluor 488 secondary antibody (2ug/ml), showing cytoplasmic and endosome staining. The nuclear sta