

Datasheet for ABIN190901
anti-LHCGR antibody (C-Term)

2 Images

[Go to Product page](#)

Overview

Quantity:	100 µg
Target:	LHCGR
Binding Specificity:	C-Term
Reactivity:	Human
Host:	Goat
Clonality:	Polyclonal
Conjugate:	This LHCGR antibody is un-conjugated
Application:	Immunofluorescence (IF), Flow Cytometry (FACS), ELISA

Product Details

Purpose:	LHCGR
Immunogen:	Peptide with sequence CQGTALLDKTRYTE, from the C Terminus of the protein sequence according to NP_000224.2.
Sequence:	CQGTALLDKT RYTE
Isotype:	IgG
Cross-Reactivity:	Human
Purification:	Purified from goat serum by ammonium sulphate precipitation followed by antigen affinity chromatography using the immunizing peptide.
Grade:	Verified

Target Details

Target:	LHCGR
Alternative Name:	LHCGR (LHCGR Products)
Background:	LHCGR, luteinizing hormone/choriogonadotropin receptor , LCGR, LGR2, LHR, hLHR , luteinizing hormone receptor, lutropin/choriogonadotropin receptor, LH receptor, CG receptor
Gene ID:	3973
NCBI Accession:	NP_000224
Pathways:	Regulation of Hormone Metabolic Process , Regulation of Hormone Biosynthetic Process , cAMP Metabolic Process , Glycosaminoglycan Metabolic Process , Regulation of Carbohydrate Metabolic Process , Autophagy , Negative Regulation of intrinsic apoptotic Signaling

Application Details

Application Notes:	Western Blot: Preliminary experiments gave an approx 35 kDa band in K562 cell lysates after 0.1 µg/mL antibody staining. This band was successfully blocked by incubation with the immunizing peptide. Primary incubation 1 hour at room temperature. Please not Peptide ELISA: antibody detection limit dilution 1:32000.
Comment:	Immunofluorescence: Strong expression of the protein seen in the plasma membranes of HeLa cells. Recommended concentration: 10µg/ml. Flow Cytometry: Flow cytometric analysis of Jurkat cells. Recommended concentration:
Restrictions:	For Research Use only

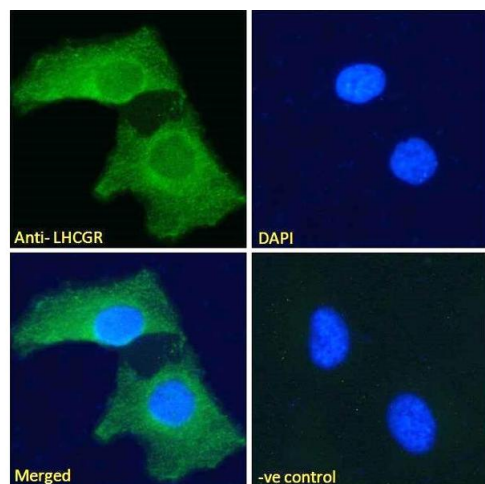
Handling

Format:	Liquid
Concentration:	0.5 mg/mL
Buffer:	Supplied at 0.5 mg/mL in Tris saline, 0.02 % sodium azide, pH 7.3 with 0.5 % bovine serum albumin.
Preservative:	Sodium azide
Precaution of Use:	This product contains Sodium azide: a POISONOUS AND HAZARDOUS SUBSTANCE which should be handled by trained staff only.
Handling Advice:	Minimize freezing and thawing.
Storage:	-20 °C

Handling

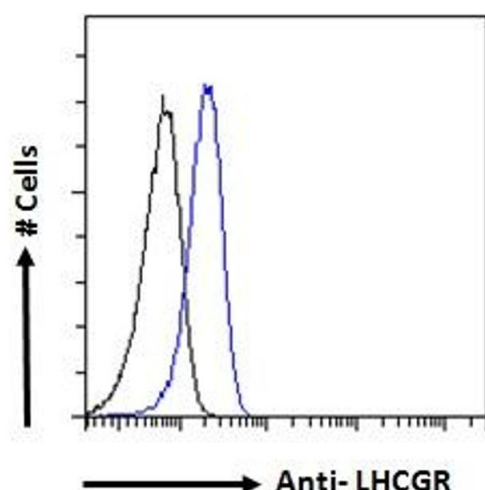
Storage Comment: Aliquot and store at -20°C, with minimal freeze/thawing. A working aliquot may be refrigerated at 4°C for a few weeks and still remain viable.

Images



Immunofluorescence

Image 1. ABIN190901 Immunofluorescence analysis of paraformaldehyde fixed HeLa cells, permeabilized with 0.15% Triton. Primary incubation 1hr (10ug/ml) followed by Alexa Fluor 488 secondary antibody (2ug/ml), showing plasma membrane staining. The nuclear stain is DAPI (blue). Negative control: Unimmunized goat IgG (10ug/ml) followed by Alexa Fluor 488 secondary antibody (2ug/ml).



Flow Cytometry

Image 2. ABIN190901 Flow cytometric analysis of paraformaldehyde fixed Jurkat cells (blue line), permeabilized with 0.5% Triton. Primary incubation overnight (10ug/ml) followed by Alexa Fluor 488 secondary antibody (1ug/ml). IgG control: Unimmunized goat IgG (black line).