

Datasheet for ABIN190906
anti-Iba1 antibody (C-Term)[Go to Product page](#)

4 Images

Overview

Quantity:	100 µg
Target:	Iba1 (IBA1)
Binding Specificity:	C-Term
Reactivity:	Human
Host:	Goat
Clonality:	Polyclonal
Conjugate:	This Iba1 antibody is un-conjugated
Application:	Immunohistochemistry (IHC), ELISA, Immunofluorescence (IF), Flow Cytometry (FACS)

Product Details

Purpose:	AIF1 / IBA1 (isoforms 1 + 3)
Immunogen:	Peptide with sequence C-YEEKAREKEKP, from the C Terminus of the protein sequence according to NP_116573.1, NP_001614.3.
Sequence:	YEEKAREKEK P
Isotype:	IgG
Specificity:	This antibody is expected to recognise isoform 1 (NP_116573.1) and isoform 3 (NP_001614.3).
Cross-Reactivity:	Human
Purification:	Purified from goat serum by ammonium sulphate precipitation followed by antigen affinity chromatography using the immunizing peptide.
Grade:	Verified

Target Details

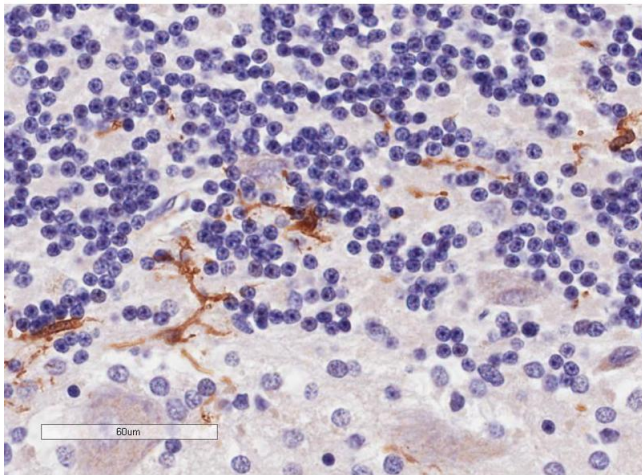
Target:	Iba1 (IBA1)
Alternative Name:	AIF1 (IBA1 Products)
Background:	AIF1, IBA1, allograft inflammatory factor 1, DASS-82G15.2, AIF-1, IRT-1, Em:AF129756.17, interferon gamma responsive transcript, ionized calcium-binding adapter molecule
Gene ID:	199
NCBI Accession:	NP_116573 , NP_001614
Pathways:	Smooth Muscle Cell Migration

Application Details

Application Notes:	Immunohistochemistry: In paraffin embedded Human Cerebellum shows staining of astrocytes. Recommended concentration, 2-4 µg/mL. Peptide ELISA: antibody detection limit dilution 1:16000.
Comment:	Flow Cytometry: Flow cytometric analysis of K562 cells. Recommended concentration: 10ug/ml. Immunofluorescence: Strong expression of the protein seen in the cytoplasm of CaCo-2 cells. Recommended concentration: 10µg/
Restrictions:	For Research Use only

Handling

Format:	Liquid
Concentration:	0.5 mg/mL
Buffer:	Supplied at 0.5 mg/mL in Tris saline, 0.02 % sodium azide, pH 7.3 with 0.5 % bovine serum albumin.
Preservative:	Sodium azide
Precaution of Use:	This product contains Sodium azide: a POISONOUS AND HAZARDOUS SUBSTANCE which should be handled by trained staff only.
Handling Advice:	Minimize freezing and thawing.
Storage:	-20 °C
Storage Comment:	Aliquot and store at -20°C, with minimal freeze/thawing. A working aliquot may be refrigerated at 4°C for a few weeks and still remain viable.

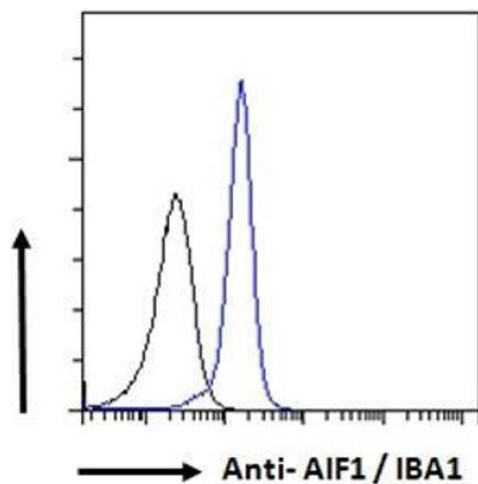


Immunohistochemistry

Image 1. ABIN190906 (4µg/ml) staining of paraffin embedded Human Cerebellum. Microwaved antigen retrieval with Tris/EDTA buffer pH9, HRP-staining.



Image 2. ABIN190906 (1µg/ml) staining of Human Lymph Node lysate (35µg protein in RIPA buffer). Primary incubation was 1 hour. Detected by chemiluminescence.



Flow Cytometry

Image 3. ABIN190906 Flow cytometric analysis of paraformaldehyde fixed K562 cells (blue line), permeabilized with 0.5% Triton. Primary incubation 1hr (10ug/ml) followed by Alexa Fluor 488 secondary antibody (1ug/ml). IgG control: Unimmunized goat IgG (black line) followed by Alexa Fluor 488 secondary antibody.

Please check the [product details page](#) for more images. Overall 4 images are available for ABIN190906.