

Datasheet for ABIN190913
anti-SUPT16H antibody (Internal Region)[Go to Product page](#)

2 Images

Overview

Quantity:	100 µg
Target:	SUPT16H
Binding Specificity:	Internal Region
Reactivity:	Human
Host:	Goat
Clonality:	Polyclonal
Application:	Western Blotting (WB), ELISA

Product Details

Purpose:	FACT / SUPT16H
Immunogen:	Peptide with sequence C-DLTNKEGKKPEEK, from the internal region of the protein sequence according to NP_009123.1.
Sequence:	DLTNKEGKKP EEK
Isotype:	IgG
Cross-Reactivity:	Cow, Human, Mouse, Pig
Purification:	Purified from goat serum by ammonium sulphate precipitation followed by antigen affinity chromatography using the immunizing peptide.
Grade:	Verified

Target Details

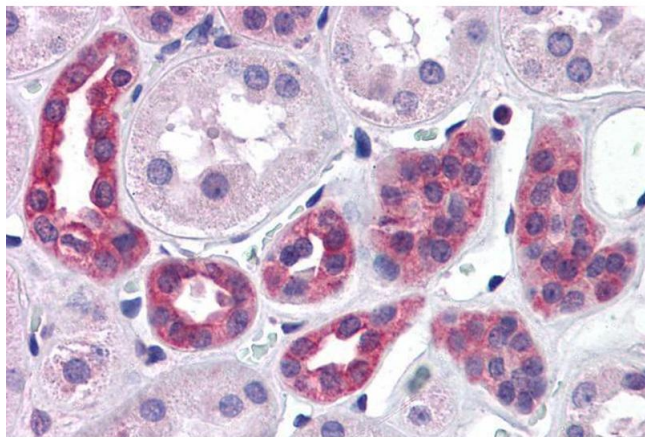
Target:	SUPT16H
Alternative Name:	SUPT16H (SUPT16H Products)
Background:	SUPT16H, FACT, suppressor of Ty 16 homolog (S. cerevisiae), HGNC:11465, CDC68, FACTP140, FLJ10857, FLJ14010, SPT16/CDC68, chromatin-specific transcription elongation factor large subunit, FLJ34357, facilitates chromatin remodeling 140 kDa subunit
Gene ID:	11198
NCBI Accession:	NP_009123
Pathways:	Chromatin Binding

Application Details

Application Notes:	Western Blot: Approx 150 kDa band observed in lysates of cell line HeLa (calculated MW of 120 kDa according to NP_009123.1). Recommended concentration: 0.1-0.3 µg/mL. An additional band of unknown identity was also consistently observed at 30 kDa. This band Peptide ELISA: antibody detection limit dilution 1:8000.
Restrictions:	For Research Use only

Handling

Format:	Liquid
Concentration:	0.5 mg/mL
Buffer:	Supplied at 0.5 mg/mL in Tris saline, 0.02 % sodium azide, pH 7.3 with 0.5 % bovine serum albumin.
Preservative:	Sodium azide
Precaution of Use:	This product contains Sodium azide: a POISONOUS AND HAZARDOUS SUBSTANCE which should be handled by trained staff only.
Handling Advice:	Minimize freezing and thawing.
Storage:	-20 °C
Storage Comment:	Aliquot and store at -20°C, with minimal freeze/thawing. A working aliquot may be refrigerated at 4°C for a few weeks and still remain viable.



Immunohistochemistry

Image 1. ABIN190913 (3.75µg/ml) staining of paraffin embedded Human Kidney. Steamed antigen retrieval with citrate buffer pH 6, AP-staining.



Western Blotting

Image 2. ABIN190913 (0.1µg/ml) staining of HeLa cell lysate (35µg protein in RIPA buffer). Detected by chemiluminescence.