



[Go to Product page](#)

Datasheet for ABIN1909156
anti-L1CAM antibody (AA 1154-1182)

2 Images

Overview

Quantity:	200 µL
Target:	L1CAM
Binding Specificity:	AA 1154-1182
Reactivity:	Human, Mouse
Host:	Rabbit
Clonality:	Polyclonal
Conjugate:	This L1CAM antibody is un-conjugated
Application:	Western Blotting (WB), Immunohistochemistry (IHC), Immunohistochemistry (Paraffin-embedded Sections) (IHC (p))

Product Details

Brand:	IHC-plus™
Specificity:	This L1CAM antibody is generated from rabbits immunized with a KLH conjugated synthetic peptide between 1154-1182 amino acids from the C-terminal region of human L1CAM.
Purification:	Protein A purified

Target Details

Target:	L1CAM
Alternative Name:	L1CAM (L1CAM Products)
Background:	Name/Gene ID: L1CAM Family: Immunoglobulin

Target Details

Synonyms: L1CAM, CAML1, CD171 antigen, HSAS, HSAS1, MASA, MIC5, N-CAM-L1, N-CAML1, L1 cell adhesion molecule, NCAM-L1, S10, SPG1, CD171

Gene ID: 3897

Pathways: [Synaptic Membrane](#)

Application Details

Application Notes: Approved: IHC, IHC-P (1:100), WB (1:1000)

Comment: Target Species of Antibody: Human

Restrictions: For Research Use only

Handling

Format: Liquid

Concentration: Lot specific

Buffer: PBS, 0.09 % sodium azide

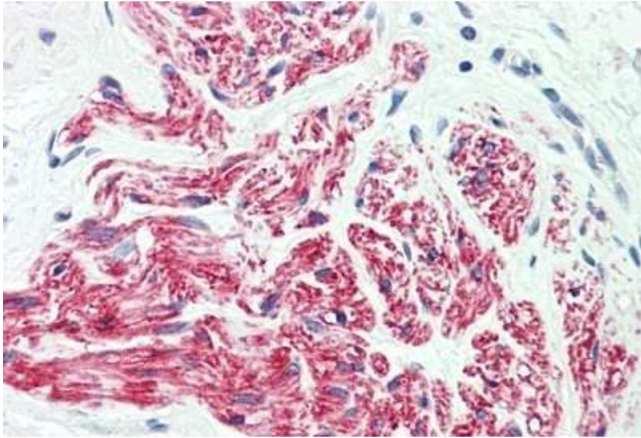
Preservative: Sodium azide

Precaution of Use: This product contains Sodium azide: a POISONOUS AND HAZARDOUS SUBSTANCE which should be handled by trained staff only.

Storage: 4 °C, -20 °C

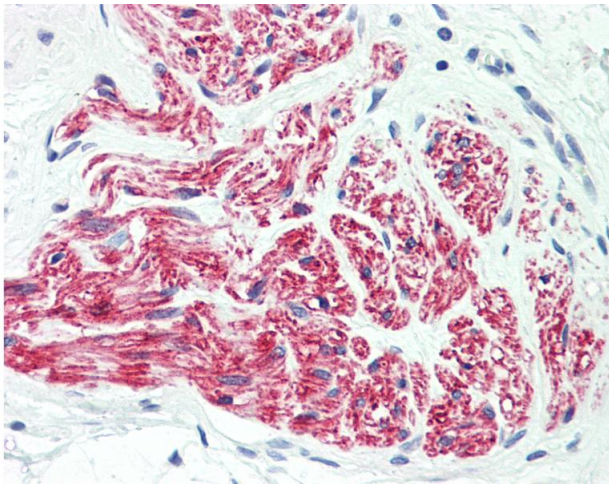
Storage Comment: Maintain refrigerated at 2-8°C for up to 6 months. For long term storage store at -20°C.

Expiry Date: 6 months



Immunohistochemistry

Image 1. Human Peripheral Nerve: Formalin-Fixed, Paraffin-Embedded (FFPE)



Immunohistochemistry

Image 2. Anti-L1CAM antibody IHC staining of human peripheral nerve. Immunohistochemistry of formalin-fixed, paraffin-embedded tissue after heat-induced antigen retrieval. Antibody dilution 1:100.