

Datasheet for ABIN190916
anti-PIWIL1 antibody (Internal Region)[Go to Product page](#)

4 Images

Overview

Quantity:	100 µg
Target:	PIWIL1
Binding Specificity:	Internal Region
Reactivity:	Human
Host:	Goat
Clonality:	Polyclonal
Conjugate:	This PIWIL1 antibody is un-conjugated
Application:	Immunohistochemistry (IHC), ELISA, Immunofluorescence (IF), Flow Cytometry (FACS)

Product Details

Purpose:	PIWI / HIWI
Immunogen:	Peptide with sequence C-SNRKDKYDAIKKY, from the internal region of the protein sequence according to NP_004755.2, NP_001177900.1.
Sequence:	SNRKDKYDAI KKY
Isotype:	IgG
Specificity:	This antibody is expected to recognise both reported isoforms (NP_004755.2, NP_001177900.1).
Cross-Reactivity:	Cow, Dog, Human, Mouse, Pig, Rat
Purification:	Purified from goat serum by ammonium sulphate precipitation followed by antigen affinity chromatography using the immunizing peptide.

Product Details

Grade: Verified

Target Details

Target: PIWIL1

Alternative Name: PIWIL1 ([PIWIL1 Products](#))

Background: PIWIL1, HIWI, PIWI, piwi-like 1 (Drosophila), piwi (Drosophila)-like 1, homolog of Drosophila piwi, MIWI, piwi homolog, piwi-like 1

Gene ID: 9271, 57749

NCBI Accession: [NP_004755](#), [NP_001177900](#)

Application Details

Application Notes: Immunohistochemistry: In paraffin embedded Human Testis shows textured cytoplasm staining in all germ cells. Recommended concentration: 4-6 µg/mL.
Peptide ELISA: antibody detection limit dilution 1:64000.

Comment: **Immunofluorescence:** Strong expression of the protein seen in the nuclei and cytoplasm of U2OS and HeLa cells. Recommended concentration: 10µg/ml.
Flow Cytometry: Flow cytometric analysis of HeLa cells. Recommended conc

Restrictions: For Research Use only

Handling

Format: Liquid

Concentration: 0.5 mg/mL

Buffer: Supplied at 0.5 mg/mL in Tris saline, 0.02 % sodium azide, pH 7.3 with 0.5 % bovine serum albumin.

Preservative: Sodium azide

Precaution of Use: This product contains Sodium azide: a POISONOUS AND HAZARDOUS SUBSTANCE which should be handled by trained staff only.

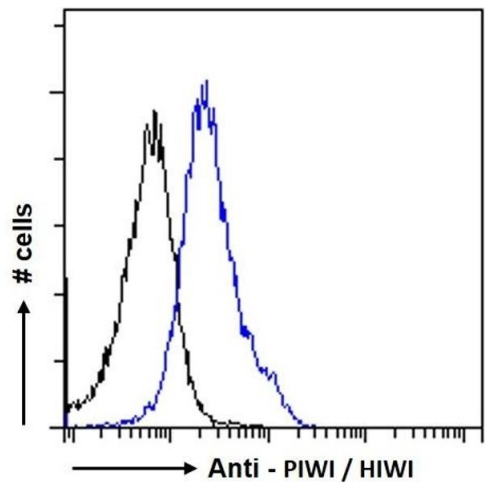
Handling Advice: Minimize freezing and thawing.

Storage: -20 °C

Storage Comment: Aliquot and store at -20°C, with minimal freeze/thawing. A working aliquot may be refrigerated

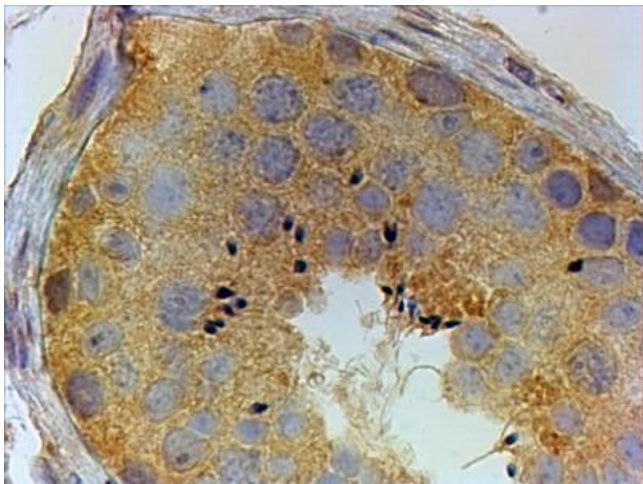
at 4°C for a few weeks and still remain viable.

Images



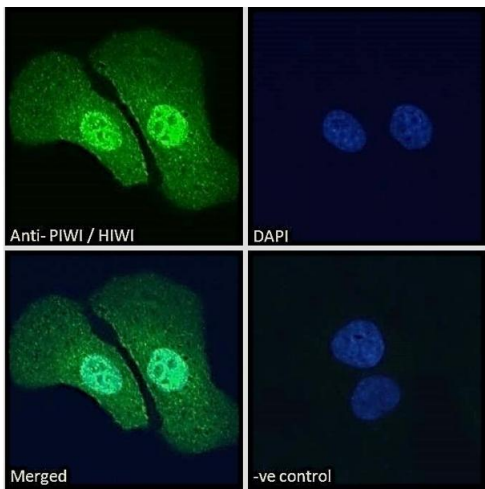
Flow Cytometry

Image 1. ABIN190916 Flow cytometric analysis of paraformaldehyde fixed HeLa cells (blue line), permeabilized with 0.5 % Triton. Primary incubation 1hr (10 µg/mL) followed by Alexa Fluor 488 secondary antibody (1 µg/mL). IgG control: Unimmunized goat IgG (black line) fol



Immunohistochemistry

Image 2. ABIN190916 (4µg/ml) staining of paraffin embedded Human Testis. Steamed antigen retrieval with citrate buffer pH 6, HRP-staining.



Immunofluorescence

Image 3. ABIN190916 Immunofluorescence analysis of paraformaldehyde fixed U2OS cells, permeabilized with 0.15 % Triton. Primary incubation 1hr (10 µg/mL) followed by Alexa Fluor 488 secondary antibody (2 µg/mL), showing nuclear and cytoplasmic staining. The nuclear stai

Please check the [product details page](#) for more images. Overall 4 images are available for ABIN190916.