

Datasheet for ABIN190918  
**anti-OSBPL5 antibody (N-Term)**[Go to Product page](#)

## 4 Images

## Overview

Quantity:	100 µg
Target:	OSBPL5
Binding Specificity:	N-Term
Reactivity:	Human, Rat
Host:	Goat
Clonality:	Polyclonal
Conjugate:	This OSBPL5 antibody is un-conjugated
Application:	Western Blotting (WB), ELISA, Immunohistochemistry (IHC), Immunofluorescence (IF), Flow Cytometry (FACS)

## Product Details

Purpose:	ORP5 (OBPH1)
Immunogen:	Peptide with sequence KEEAFLRRRFSLC, from the N Terminus of the protein sequence according to NP_065947.1, NP_663613.1, NP_001137535.1.
Sequence:	KEEAFLRRRF SLC
Isotype:	IgG
Specificity:	This antibody is expected to recognise both reported isoforms. Variants (NP_663613.1, NP_001137535.1) encode the same isoform.
Cross-Reactivity:	Dog, Human, Mouse, Rat
Purification:	Purified from goat serum by ammonium sulphate precipitation followed by antigen affinity

## Product Details

chromatography using the immunizing peptide.

Grade: Verified

## Target Details

Target: OSBPL5

Alternative Name: OSBPL5 ([OSBPL5 Products](#))

Background: OSBPL5, ORP5, OBPH1, FLJ31948, KIAA1534, DKFZp586H1719, oxysterol binding protein-like 5, OSBP-related protein 5, oxysterol-binding protein homologue 1, oxysterol-binding protein-related protein 5, FLJ42929, oxysterol-binding protein-like protein 5

Gene ID: 114879, 79196

NCBI Accession: [NP\\_065947](#), [NP\\_663613](#), [NP\\_001137535](#)

## Application Details

Application Notes: Immunohistochemistry: Paraffin embedded Human Kidney and Liver. Recommended concentration: 5 µg/mL.  
Western Blot: Approx. 100 kDa band observed in lysates of cell line Jurkat and in Rat Spleen lysates (calculated MW of 98.4 kDa according to Human NP\_065947.1 and 101.7 kDa according to Rat NP\_001015024.2). Recommended concentration: 0.03=0.3 µg/mL. Primary Peptide ELISA: antibody detection limit dilution 1:32000.

Comment: **Immunofluorescence:** Strong expression of the protein seen in the cytoplasm of HeLa and U2OS cells. Recommended concentration: 10µg/ml.  
**Flow Cytometry:** Flow cytometric analysis of HeLa cells. Recommended concentration:

Restrictions: For Research Use only

## Handling

Format: Liquid

Concentration: 0.5 mg/mL

Buffer: Supplied at 0.5 mg/mL in Tris saline, 0.02 % sodium azide, pH 7.3 with 0.5 % bovine serum albumin.

Preservative: Sodium azide

Precaution of Use: This product contains Sodium azide: a POISONOUS AND HAZARDOUS SUBSTANCE which

## Handling

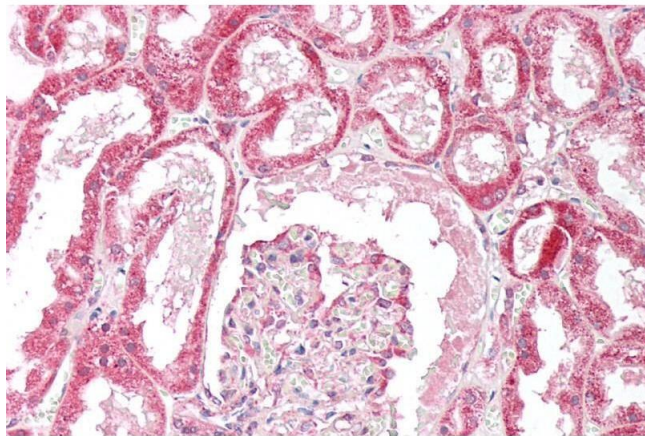
should be handled by trained staff only.

Handling Advice: Minimize freezing and thawing.

Storage: -20 °C

Storage Comment: Aliquot and store at -20°C, with minimal freeze/thawing. A working aliquot may be refrigerated at 4°C for a few weeks and still remain viable.

## Images



### Immunohistochemistry

**Image 1.** ABIN190918 (5µg/ml) staining of paraffin embedded Human Kidney. Steamed antigen retrieval with citrate buffer pH 6, AP-staining.



### Western Blotting

**Image 2.** ABIN190918 (0.2µg/ml) staining of Human Spleen lysate (35µg protein in RIPA buffer). Detected by chemiluminescence.



**Image 3.** ABIN190918 (2µg/ml) staining of human spleen lysate (35µg protein in RIPA buffer). Primary incubation was 1 hour. Detected by chemiluminescence.

Please check the [product details page](#) for more images. Overall 4 images are available for ABIN190918.