

Datasheet for ABIN1909537
anti-LDLR antibody (AA 499-511)[Go to Product page](#)

2 Images

Overview

Quantity:	1 each
Target:	LDLR
Binding Specificity:	AA 499-511
Reactivity:	Human, Mouse
Host:	Rabbit
Clonality:	Polyclonal
Conjugate:	This LDLR antibody is un-conjugated
Application:	Western Blotting (WB), Immunohistochemistry (IHC), Immunocytochemistry (ICC), Immunohistochemistry (Paraffin-embedded Sections) (IHC (p))

Product Details

Brand:	IHC-plus™
Immunogen:	Synthetic peptide from mouse LDL receptor amino acids 499-511 (SVADTKGVKRRTL). Percent identity by BLAST analysis: Mouse (100%), Human, Gibbon, Monkey, Rat, Bovine, Panda, Pig (92%), Marmoset, Dog, Bat, Hamster, Elephant, Horse, Platypus (85%). Type of Immunogen: Synthetic peptide
Isotype:	IgG
Specificity:	Synthetic peptide from murine LDL receptor amino acids 499-511 (SVADTKGVKRRTL)
Purification:	Affinity purified

Target Details

Target:	LDLR
Alternative Name:	LDLR / LDL Receptor (LDLR Products)
Background:	Name/Gene ID: LDLR Synonyms: LDLR, FHC, LDL receptor, LDLCQ2
Gene ID:	3949
Pathways:	Hepatitis C , Lipid Metabolism

Application Details

Application Notes:	Approved: ICC, IHC, IHC-P (10 µg/mL), WB Usage: Immunohistochemistry: This antibody was validated for use in immunohistochemistry on a panel of 21 formalin-fixed, paraffin-embedded (FFPE) human tissues after heat induced antigen retrieval in pH 6.0 citrate buffer. After incubation with the primary antibody, slides were incubated with biotinylated secondary antibody, followed by alkaline phosphatase-streptavidin and chromogen. The stained slides were evaluated by a pathologist to confirm staining specificity. The optimal working concentration for this antibody was determined to be 10 µg/mL.
Comment:	Target Species of Antibody: Mouse
Restrictions:	For Research Use only

Handling

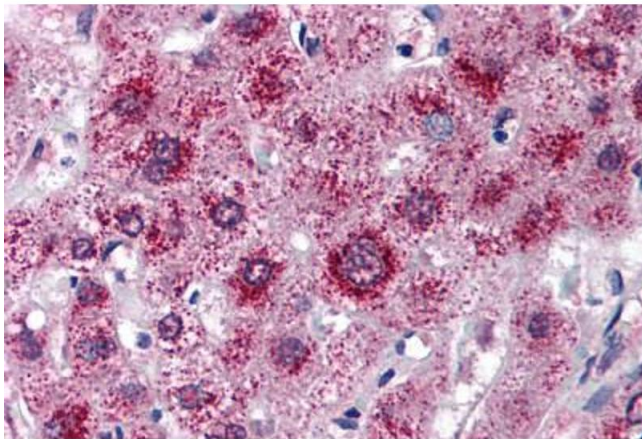
Format:	Liquid
Reconstitution:	Reconstitute with 0.5 mL of deionized water
Concentration:	Lot specific
Buffer:	TBS, pH 7.4, containing 50 % glycerol, 0.1 % BSA, and 0.02 % sodium azide
Preservative:	Sodium azide
Precaution of Use:	This product contains Sodium azide: a POISONOUS AND HAZARDOUS SUBSTANCE which should be handled by trained staff only.
Handling Advice:	Avoid repeat freeze-thaw cycles.

Handling

Storage: 4 °C, -20 °C

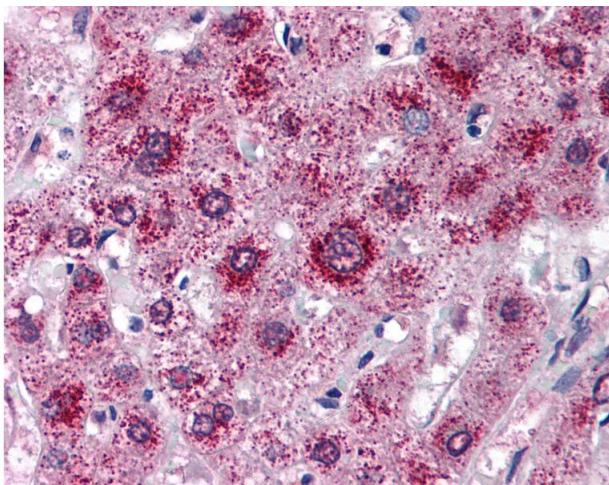
Storage Comment: Short term: 4°C. Long term: Store at -20°C. Avoid freeze-thaw cycles.

Images



Immunohistochemistry

Image 1. Anti-LDL Receptor antibody IHC of human liver. Immunohistochemistry of formalin-fixed, paraffin-embedded tissue after heat-induced antigen retrieval. Antibody ABIN1909537 concentration 10 µg/mL.



Immunohistochemistry

Image 2. Anti-LDL Receptor antibody IHC of human liver. Immunohistochemistry of formalin-fixed, paraffin-embedded tissue after heat-induced antigen retrieval. Antibody concentration 10 ug/ml.