



[Go to Product page](#)

Datasheet for ABIN1911046
anti-LYVE1 antibody (AA 46-77)

1 Image

Overview

| | |
|----------------------|--|
| Quantity: | 200 µL |
| Target: | LYVE1 |
| Binding Specificity: | AA 46-77 |
| Reactivity: | Human, Mouse |
| Host: | Rabbit |
| Clonality: | Polyclonal |
| Conjugate: | This LYVE1 antibody is un-conjugated |
| Application: | Western Blotting (WB), Immunohistochemistry (IHC), Immunohistochemistry (Paraffin-embedded Sections) (IHC (p)) |

Product Details

| | |
|---------------|--|
| Brand: | IHC-plus™ |
| Specificity: | This XLKD1 antibody is generated from rabbits immunized with a KLH conjugated synthetic peptide between 46-77 amino acids from the N-terminal region of human XLKD1. |
| Purification: | Ammonium sulfate precipitation |

Target Details

| | |
|-------------------|---|
| Target: | LYVE1 |
| Alternative Name: | LYVE1 / LYVE-1 (LYVE1 Products) |
| Background: | Name/Gene ID: LYVE1 |

Target Details

Synonyms: LYVE1, CRSBP-1, CRSBP1, Hyaluronic acid receptor, LYVE-1, XLKD1, HAR

Gene ID: 10894

Pathways: [Glycosaminoglycan Metabolic Process](#)

Application Details

Application Notes: Approved: IHC, IHC-P (1:100), WB (1:1000)

Usage: This antibody does not work for IHC with samples fixed in 4 % PFA.

Comment: Target Species of Antibody: Human

Restrictions: For Research Use only

Handling

Format: Liquid

Concentration: Lot specific

Buffer: PBS, 0.09 % sodium azide

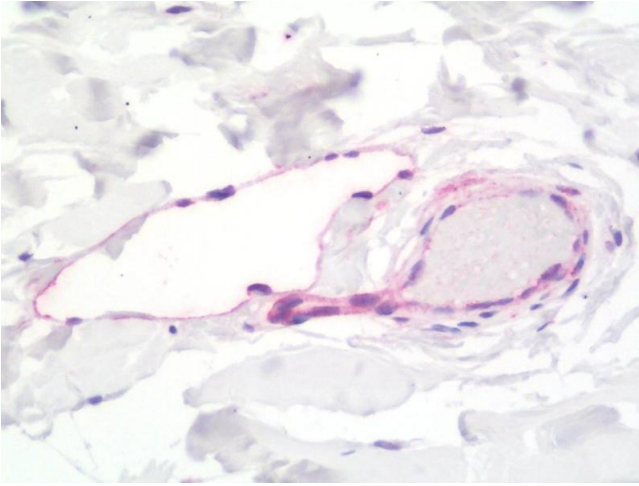
Preservative: Sodium azide

Precaution of Use: This product contains Sodium azide: a POISONOUS AND HAZARDOUS SUBSTANCE which should be handled by trained staff only.

Storage: 4 °C, -20 °C

Storage Comment: Maintain refrigerated at 2-8°C for up to 6 months. For long term storage store at -20°C.

Expiry Date: 6 months



Immunohistochemistry

Image 1. Anti-LYVE1 / LYVE-1 antibody IHC staining of human breast. Immunohistochemistry of formalin-fixed, paraffin-embedded tissue after heat-induced antigen retrieval. Antibody dilution 1:100.