

Datasheet for ABIN1912725
anti-CCDC90A antibody (AA 252-301)[Go to Product page](#)

2 Images

Overview

Quantity:	50 µg
Target:	CCDC90A (MCUR1)
Binding Specificity:	AA 252-301
Reactivity:	Human, Cow, Dog, Horse, Monkey
Host:	Rabbit
Clonality:	Polyclonal
Conjugate:	This CCDC90A antibody is un-conjugated
Application:	Western Blotting (WB), Immunohistochemistry (Paraffin-embedded Sections) (IHC (p)), Immunohistochemistry (IHC)

Product Details

Brand:	IHC-plus™
Immunogen:	Synthetic peptide located between aa252-301 of human MCUR1 (Q96AQ8, NP_001026883). Percent identity by BLAST analysis: Human, Chimpanzee, Gorilla, Gibbon, Marmoset (100%), Galago, Mouse, Rat, Guinea pig, Platypus (92%), Elephant, Dog, Horse, Turkey, Chicken (85%). Type of Immunogen: Synthetic peptide
Isotype:	IgG
Specificity:	Human CCDC90A
Purification:	Immunoaffinity purified

Target Details

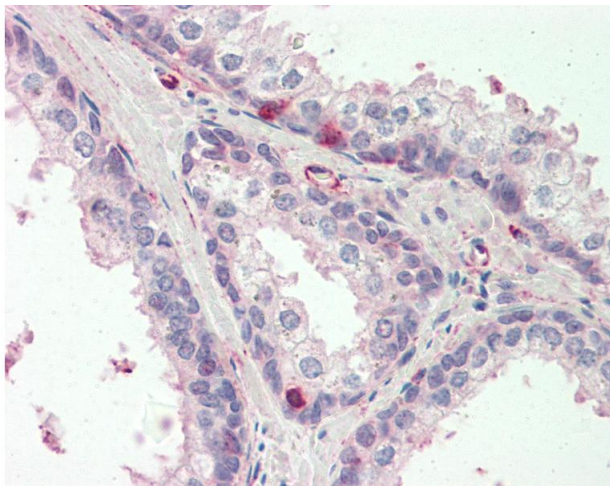
Target:	CCDC90A (MCUR1)
Alternative Name:	MCUR1 / CCDC90A (MCUR1 Products)
Background:	Name/Gene ID: MCUR1 Synonyms: MCUR1, C6orf79, CCDC90A
Gene ID:	63933
NCBI Accession:	NP_001026883

Application Details

Application Notes:	Approved: IHC, IHC-P (5 µg/mL), WB (0.2 - 1 µg/mL) Usage: Western Blot: Suggested dilution at 1 µg/mL in 5 % skim milk / PBS buffer, and HRP conjugated anti-Rabbit IgG should be diluted in 1: 50,000 - 100,000 as second antibody. ELISA titer in peptide based assay: 1:1562500.
Comment:	Target Species of Antibody: Human
Restrictions:	For Research Use only

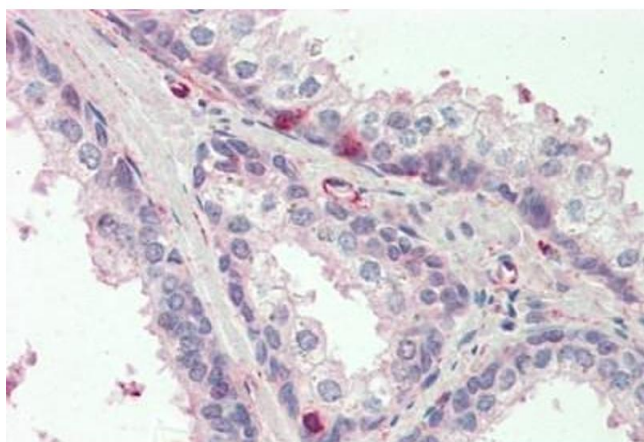
Handling

Format:	Lyophilized
Reconstitution:	Distilled water
Concentration:	Lot specific
Buffer:	Lyophilized from PBS with 2 % sucrose
Handling Advice:	Avoid repeat freeze-thaw cycles.
Storage:	4 °C, -20 °C
Storage Comment:	Long term: -20°C, the use of 50% glycerol is recommended if storing aliquots in -20°C for long term use (up to 1 year) Short term (less than 1 week): 4°C. Avoid freeze-thaw cycles.



Immunohistochemistry

Image 1. Anti-MCUR1 / CCDC90A antibody IHC staining of human prostate. Immunohistochemistry of formalin-fixed, paraffin-embedded tissue after heat-induced antigen retrieval. Antibody concentration 5 ug/ml. This image was taken for the unconjugated form of th ...



Immunohistochemistry

Image 2. Human Prostate: Formalin-Fixed, Paraffin-Embedded (FFPE)