



[Go to Product page](#)

Datasheet for ABIN1913720
anti-DUSP6 antibody (AA 14-201)

2 Images

Overview

Quantity:	50 µg
Target:	DUSP6
Binding Specificity:	AA 14-201
Reactivity:	Human
Host:	Rabbit
Clonality:	Polyclonal
Conjugate:	This DUSP6 antibody is un-conjugated
Application:	Western Blotting (WB), ELISA, Immunohistochemistry (IHC), Immunohistochemistry (Paraffin-embedded Sections) (IHC (p))

Product Details

Brand:	IHC-plus™
Immunogen:	A recombinant human DUSP6 protein 14-201aa (BC003143). Type of Immunogen: Recombinant protein
Specificity:	Human MKP3 / DUSP6.
Purification:	Affinity purified

Target Details

Target:	DUSP6
Alternative Name:	MKP3 / DUSP6 (DUSP6 Products)

Target Details

Background: Name/Gene ID: DUSP6
Subfamily: Dual specificity MKP
Family: Protein Phosphatase

Synonyms: DUSP6, Dual specificity phosphatase 6, MAP kinase phosphatase 3, MKP3, PYST1, RVH6, Mapk phosphatase 3, MKP-3, Phosphatase VH6

Gene ID: 1848

Pathways: [Neurotrophin Signaling Pathway](#), [Activation of Innate immune Response](#), [Toll-Like Receptors Cascades](#)

Application Details

Application Notes: Approved: ELISA (1:20000 - 1:80000), IHC, IHC-P (10 µg/mL), WB (1:1000 - 1:2000)

Comment: Target Species of Antibody: Human

Restrictions: For Research Use only

Handling

Format: Liquid

Concentration: Lot specific

Buffer: PBS, pH 7.4, 0.02 % sodium azide

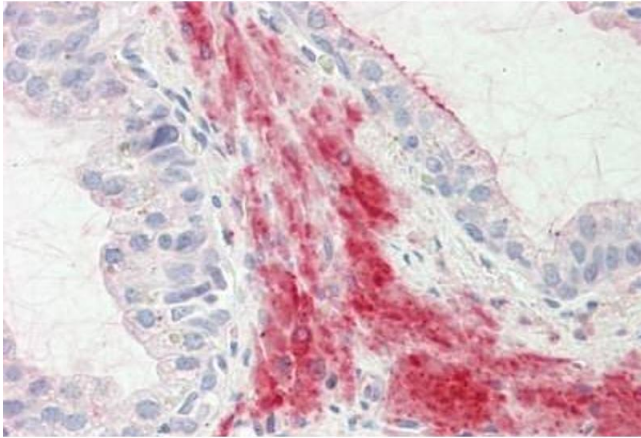
Preservative: Sodium azide

Precaution of Use: This product contains Sodium azide: a POISONOUS AND HAZARDOUS SUBSTANCE which should be handled by trained staff only.

Storage: -20 °C

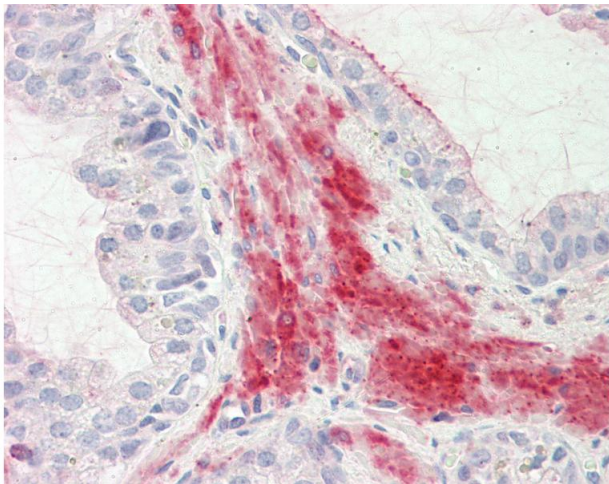
Storage Comment: Store at -20°C for up to 1 year.

Expiry Date: 12 months



Immunohistochemistry

Image 1. Human Prostate: Formalin-Fixed, Paraffin-Embedded (FFPE)



Immunohistochemistry

Image 2. Anti-MKP3 / DUSP6 antibody IHC staining of human prostate. Immunohistochemistry of formalin-fixed, paraffin-embedded tissue after heat-induced antigen retrieval. Antibody concentration 10 ug/ml.