



## Datasheet for ABIN1918969 **anti-NUMA1 antibody (AA 1-339)**



[Go to Product page](#)

### 1 Image

#### Overview

Quantity:	100 µL
Target:	NUMA1
Binding Specificity:	AA 1-339
Reactivity:	Human
Host:	Rabbit
Clonality:	Polyclonal
Conjugate:	This NUMA1 antibody is un-conjugated
Application:	Western Blotting (WB), Immunohistochemistry (IHC), Immunohistochemistry (Paraffin-embedded Sections) (IHC (p)), Immunocytochemistry (ICC)

#### Product Details

Brand:	IHC-plus™
Immunogen:	Recombinant fragment corresponding to a region within amino acids 1 and 339 of NuMA (SwissProt Q14980).  Type of Immunogen: Recombinant protein
Specificity:	Human NUMA
Purification:	Immunoaffinity purified

#### Target Details

Target:	NUMA1
---------	-------

## Target Details

---

Alternative Name: NUMA1 / NUMA ([NUMA1 Products](#))

Background: Name/Gene ID: NUMA1

Synonyms: NUMA1, Structural nuclear protein, NuMA protein, SP-H antigen, NUMA

Gene ID: 4926

Pathways: [Caspase Cascade in Apoptosis](#), [Regulation of Actin Filament Polymerization](#), [M Phase](#)

## Application Details

---

Application Notes: Approved: ICC (1:2000), IHC, IHC-P (7.5 µg/mL), WB (1:500 - 1:3000)

Usage: IHC-paraffin: Suggested antigen retrieval using heat mediated 10 mM Citrate buffer ( pH 6.0) or Tris-EDTA buffer ( pH 8.0).

Comment: Target Species of Antibody: Human

Restrictions: For Research Use only

## Handling

---

Format: Liquid

Concentration: Lot specific

Buffer: PBS, pH 7.0, 20 % glycerol, 0.025 % proclin.

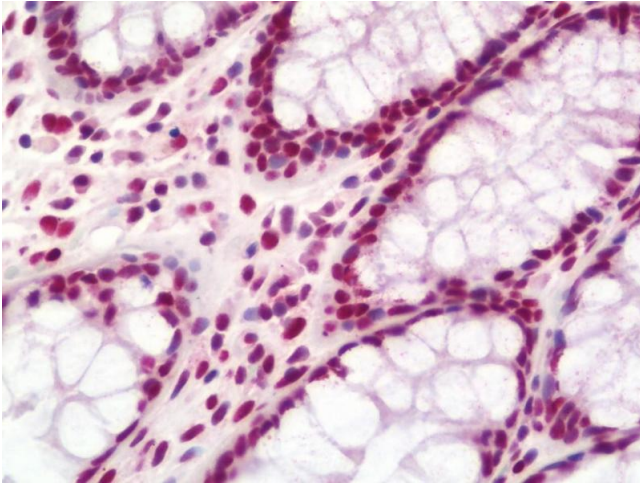
Preservative: ProClin

Precaution of Use: This product contains ProClin: a POISONOUS AND HAZARDOUS SUBSTANCE which should be handled by trained staff only.

Handling Advice: Avoid multiple freeze-thaw cycles.

Storage: -20 °C

Storage Comment: Keep as concentrated solution. Aliquot and store at -20°C or below. Avoid multiple freeze-thaw cycles.



### Immunohistochemistry

**Image 1.** Anti-NUMA1 / NUMA antibody IHC staining of human colon. Immunohistochemistry of formalin-fixed, paraffin-embedded tissue after heat-induced antigen retrieval. Antibody concentration 7.5 ug/ml.