

Datasheet for ABIN192150
anti-CD58 antibody (PE)[Go to Product page](#)

2 Images

Overview

Quantity:	100 tests
Target:	CD58
Reactivity:	Human, Pig
Host:	Mouse
Clonality:	Monoclonal
Conjugate:	This CD58 antibody is conjugated to PE
Application:	Flow Cytometry (FACS)

Product Details

Immunogen:	NALM-6 human pre-B cell line
Clone:	MEM-63
Isotype:	IgG1
Specificity:	The antibody MEM-63 reacts with CD58 (LFA-3), a 40-70 kDa extracellular membrane glycoprotein distributed over many tissues, leukocytes, erythrocytes, endothelial cells, epithelial cells and fibroblasts.
Cross-Reactivity (Details):	Porcine, Human
Purification:	Purified antibody is conjugated with R-phycoerythrin (PE) under optimum conditions. Unconjugated antibody and free fluorochrome are removed by size-exclusion chromatography.

Target Details

Target:	CD58
---------	------

Target Details

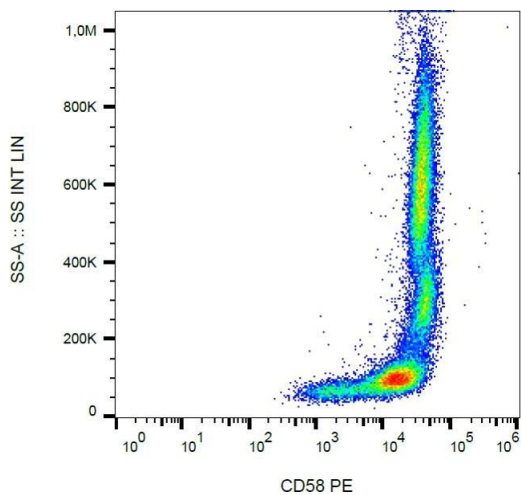
Alternative Name:	CD58 (CD58 Products)
Background:	CD58 Molecule,CD58 (LFA-3) is an immunoglobulin family adhesion molecule expressed by both hematopoietic and non-hematopoietic cells (often on antigen presenting cells) and serving as ligand of CD2. This interaction is important for T cell-mediated immunity. CD58 is expressed in transmembrane form and in GPI-anchored form, the later is constitutively associated with protein kinases whereas the transmembrane form activates kinase activity upon triggering. CD58 is a powerful tool for detection of minimal residual disease in acute lymphocytic leukemia, and for evaluation of liver damage related with hepatitis B.,LFA3, AG3
Gene ID:	965
UniProt:	P19256

Application Details

Application Notes:	Flow cytometry: The reagent is designed for analysis of human blood cells using 20 µL reagent / 100 µL of whole blood or 10 ⁶ cells in a suspension. The content of a vial (2 ml) is sufficient for 100 tests.
Comment:	The purified antibody is conjugated with R-Phycoerythrin (PE) under optimum conditions. The conjugate is purified by size-exclusion chromatography and adjusted for direct use. No reconstitution is necessary.
Restrictions:	For Research Use only

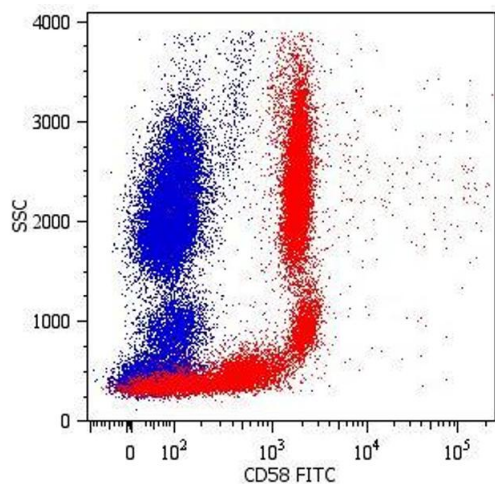
Handling

Reconstitution:	No reconstitution is necessary.
Buffer:	Stabilizing Tris buffered saline (TBS), pH 8.0, 15 mM sodium azide
Preservative:	Sodium azide
Precaution of Use:	This product contains Sodium azide: a POISONOUS AND HAZARDOUS SUBSTANCE which should be handled by trained staff only.
Handling Advice:	Do not freeze. Avoid prolonged exposure to light.
Storage:	4 °C
Storage Comment:	Store at 2-8°C. Protect from prolonged exposure to light. Do not freeze.



Flow Cytometry

Image 1. Flow cytometry analysis (surface staining) of human peripheral blood cells with anti-CD58 (MEM-63) PE.



Flow Cytometry

Image 2. Surface staining of human peripheral blood cells with anti-CD58 (MEM-63) FITC.