

Datasheet for ABIN192166  
**anti-C-Peptide antibody (Biotin)**



[Go to Product page](#)

1 Image

1 Publication

### Overview

Quantity:	0.1 mg
Target:	C-Peptide
Reactivity:	Human
Host:	Mouse
Clonality:	Monoclonal
Conjugate:	This C-Peptide antibody is conjugated to Biotin
Application:	ELISA, Immunocytochemistry (ICC), Immunohistochemistry (Paraffin-embedded Sections) (IHC (p)), Radioimmunoassay (RIA)

### Product Details

Immunogen:	Human C-peptide conjugated to bovine serum albumin.
Clone:	C-PEP-01
Isotype:	IgG1
Specificity:	The mouse monoclonal antibody C-PEP-01 reacts specifically with C-peptide, a part of the proinsulin molecule. Proinsulin consists of three parts: C-peptide and two long strands of amino acids (alpha and beta chains, later become linked together to form the insulin molecule). No cross-reactivity with insulin or other peptide hormones or proteins was observed.
Cross-Reactivity (Details):	Human
Purification:	Purified antibody is conjugated with biotin LC-NHS ester under optimum conditions and unconjugated antibody and free biotin are removed by size-exclusion chromatography.

## Target Details

---

Target:	C-Peptide
Abstract:	<a href="#">C-Peptide Products</a>
Background:	From every molecule of proinsulin, one molecule of insulin plus one molecule of C-peptide are produced. C-peptide is released into the blood stream in equal amounts to insulin.,C-peptide of proinsulin

## Application Details

---

Application Notes:	Optimal working dilution should be determined by the investigator.
Comment:	The purified antibody is conjugated with Biotin-LC-NHS under optimum conditions. The reagent is free of unconjugated biotin.
Restrictions:	For Research Use only

## Handling

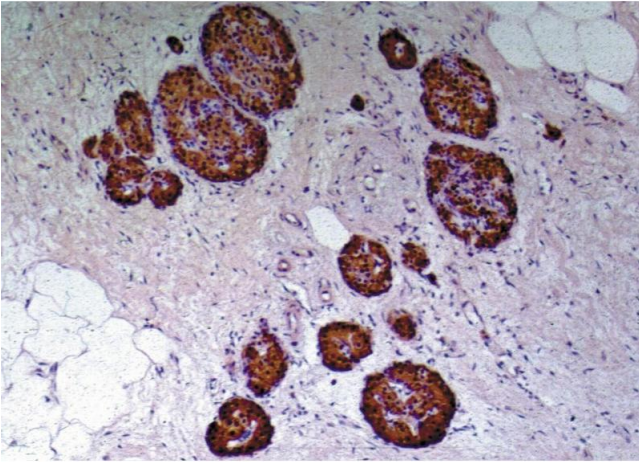
---

Concentration:	1 mg/mL
Buffer:	Phosphate buffered saline (PBS), pH 7.4, 15 mM sodium azide
Preservative:	Sodium azide
Precaution of Use:	This product contains Sodium azide: a POISONOUS AND HAZARDOUS SUBSTANCE which should be handled by trained staff only.
Handling Advice:	<b>Do not freeze.</b> Avoid prolonged exposure to light.
Storage:	4 °C
Storage Comment:	Store at 2-8°C. Do not freeze.

## Publications

---

Product cited in:	Hilgert, Stolba, Kristofová, Stefanová, Bendlová, Lebl, Horejsí: "A monoclonal antibody applicable for determination of C-peptide of human proinsulin by RIA." in: <b>Hybridoma</b> , Vol. 10, Issue 3, pp. 379-86, (1991) ( <a href="#">PubMed</a> ).
-------------------	--



### Immunohistochemistry

**Image 1.** Immunohistochemistry of paraffin-embedded sections (human pancreas) Immunohistochemistry staining of human pancreas (paraffin-embedded sections) with anti-human to C-peptide of Proinsulin (C-PEP-01).