



[Go to Product page](#)

Datasheet for ABIN192205

anti-HLA-DP/DR antibody (FITC)

2 Images

1 Publication

Overview

Quantity:	100 tests
Target:	HLA-DP/DR
Reactivity:	Human
Host:	Mouse
Clonality:	Monoclonal
Conjugate:	This HLA-DP/DR antibody is conjugated to FITC
Application:	Flow Cytometry (FACS)

Product Details

Immunogen:	PHA-activated peripheral blood lymphocytes.
Clone:	MEM-136
Isotype:	IgG1
Specificity:	The antibody MEM-136 recognizes a common extracellular epitope on beta-chain of human HLA-DR and HLA-DP. It reacts with alpha/beta dimer as well as with dissociated beta-subunit. DR and DP are the isotypes of human MHC Class II molecules expressed on antigen-presenting cells (APC, dendritic cells, B lymphocytes, monocytes, macrophages).
Cross-Reactivity (Details):	Human
Purification:	Purified antibody is conjugated with fluorescein isothiocyanate (FITC) under optimum conditions and unconjugated antibody and free fluorochrome are removed by size-exclusion chromatography.

Target Details

Target:	HLA-DP/DR
Alternative Name:	HLA-DR+DP (HLA-DP/DR Products)

Application Details

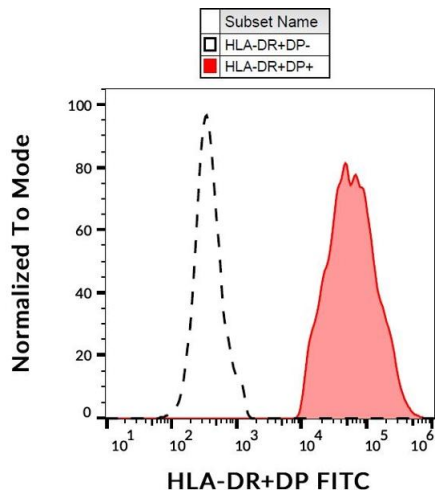
Application Notes:	Flow cytometry: The reagent is designed for analysis of human blood cells using 20 µL reagent / 100 µL of whole blood or 10 ⁶ cells in a suspension. The content of a vial (2 ml) is sufficient for 100 tests.
Comment:	The purified antibody is conjugated with Fluorescein isothiocyanate (FITC) under optimum conditions. The reagent is free of unconjugated FITC and adjusted for direct use. No reconstitution is necessary.
Restrictions:	For Research Use only

Handling

Reconstitution:	No reconstitution is necessary.
Buffer:	Stabilizing phosphate buffered saline (PBS), pH 7.4, 15 mM sodium azide
Preservative:	Sodium azide
Precaution of Use:	This product contains Sodium azide: a POISONOUS AND HAZARDOUS SUBSTANCE which should be handled by trained staff only.
Handling Advice:	Do not freeze. Avoid prolonged exposure to light.
Storage:	4 °C
Storage Comment:	Store at 2-8°C. Protect from prolonged exposure to light. Do not freeze.

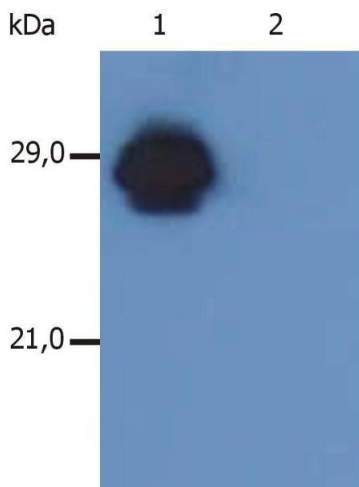
Publications

Product cited in:	Koch, Staffler, Hüttinger, Hilgert, Prager, Cerný, Steinlein, Majdic, Horejsí, Stockinger: "T cell activation-associated epitopes of CD147 in regulation of the T cell response, and their definition by antibody affinity and antigen density." in: International immunology , Vol. 11, Issue 5, pp. 777-86, (1999) (PubMed).
-------------------	---



Flow Cytometry

Image 1. Flow cytometry analysis (surface staining) of human peripheral blood with anti-human HLA-DR+DP (MEM-136) FITC.



Western Blotting

Image 2. Western Blotting analysis of MHC Class II in whole cell lysate of RAJI human Burkitt lymphoma cell line using anti-human HLA-DR+DP (MEM-136). The antibody recognizes β -chain of HLA-DR antigen under non-reducing conditions. Lane 1: immunostaining with anti-human HLA-DR+DP () Lane 2: immunostaining with Isotype mouse IgG1 control (PPV-06; 11-457-C100)