

Datasheet for ABIN192229
anti-CD27 antibody (APC)

2 Images

[Go to Product page](#)

Overview

Quantity:	100 tests
Target:	CD27
Reactivity:	Human
Host:	Mouse
Clonality:	Monoclonal
Conjugate:	This CD27 antibody is conjugated to APC
Application:	Flow Cytometry (FACS)

Product Details

Immunogen:	Human peripheral blood lymphocytes
Clone:	LT27
Isotype:	IgG2a
Specificity:	The antibody LT27 reacts with an extracellular epitope of CD27 (T14), a 50-55 kDa type I transmembrane glycoprotein (member of the TNF-receptor superfamily) expressed on medullary thymocytes, peripheral T lymphocytes, some B lymphocytes and NK cells.
Cross-Reactivity (Details):	Human
Purification:	Purified antibody is conjugated with activated allophycocyanin (APC) under optimum conditions and unconjugated antibody and free fluorochrome are removed by size-exclusion chromatography.

Target Details

Target:	CD27
Alternative Name:	CD27 (CD27 Products)
Background:	CD27 Molecule,CD27 is a transmembrane 55 kDa protein of the nerve growth factor-receptor family, expressed as a disulfide-linked homodimer on mature thymocytes, peripheral blood T cells and a subpopulation of B cells. Activation of T cells via TCR-CD3 complex results in upregulation of CD27 expression on the plasma membrane as well as in the release of its soluble 28-32 kDa form, sCD27, detected in the plasma, urine or spinal fluid. This sCD27 is an important prognostic marker of acute and chronic B cell malignancies. RgpA, a cysteine proteinase, although activating T cells through the protease-activated receptors (PARs), degrades CD27 and counteracts T cell activation mediated by CD27 and its ligand CD70.,T14, TNFRSF7, LPFS2, S152, Tp55
Gene ID:	939
UniProt:	P26842
Pathways:	Production of Molecular Mediator of Immune Response , Cancer Immune Checkpoints

Application Details

Application Notes:	Flow cytometry: The reagent is designed for analysis of human blood cells using 10 µL reagent / 100 µL of whole blood or 10 ⁶ cells in a suspension. The content of a vial (1 ml) is sufficient for 100 tests.
Comment:	The purified antibody is conjugated with cross-linked Allophycocyanin (APC) under optimum conditions. The conjugate is purified by size-exclusion chromatography and adjusted for direct use. No reconstitution is necessary.
Restrictions:	For Research Use only

Handling

Reconstitution:	No reconstitution is necessary.
Buffer:	Stabilizing phosphate buffered saline (PBS), pH 7.4, 15 mM sodium azide
Preservative:	Sodium azide
Precaution of Use:	This product contains Sodium azide: a POISONOUS AND HAZARDOUS SUBSTANCE which should be handled by trained staff only.
Handling Advice:	Do not freeze.

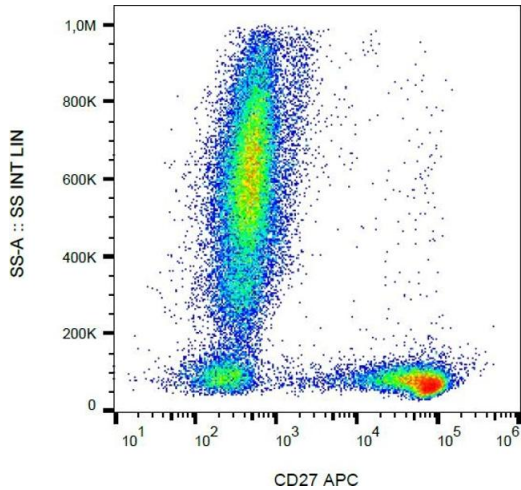
Handling

Avoid prolonged exposure to light.

Storage: 4 °C

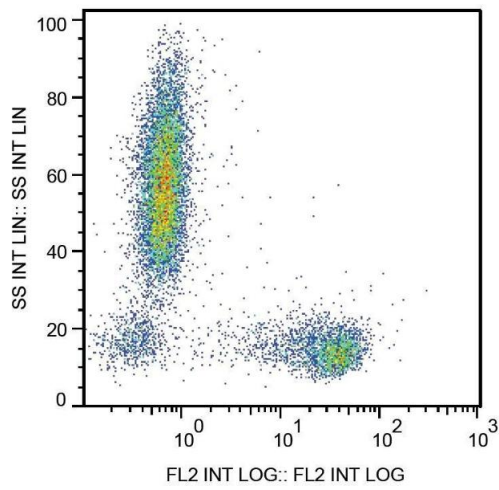
Storage Comment: Store at 2-8°C. Protect from prolonged exposure to light. Do not freeze.

Images



Flow Cytometry

Image 1. Flow cytometry analysis (surface staining) of human peripheral blood cells with anti-human CD27 (LT27) APC.



Flow Cytometry

Image 2. Flow Cytometry analysis Surface staining of human peripheral blood cells with anti-human CD27 (LT27) PE.