



[Go to Product page](#)

Datasheet for ABIN192234

anti-Integrin Alpha2b antibody (APC)

2 Images

Overview

Quantity:	100 tests
Target:	Integrin Alpha2b (CD41)
Reactivity:	Human
Host:	Mouse
Clonality:	Monoclonal
Conjugate:	This Integrin Alpha2b antibody is conjugated to APC
Application:	Flow Cytometry (FACS)

Product Details

Immunogen:	Leukocytes of patient suffering from LGL-type leukaemia.
Clone:	MEM-06
Isotype:	IgG1
Specificity:	The antibody MEM-06 reacts with an extracellular epitope of CD41 (GPIIb), a transmembrane glycoprotein (integrin family) composed of two chains GPIIb alpha (heavy chain, 120 kDa) and GPIIb beta (light chain, 23 kDa). CD41 is mainly expressed on platelets and megakaryocytes.
Cross-Reactivity (Details):	Human
Purification:	Purified antibody is conjugated with activated allophycocyanin (APC) under optimum conditions and unconjugated antibody and free fluorochrome are removed by size-exclusion chromatography.

Target Details

Target:	Integrin Alpha2b (CD41)
Alternative Name:	CD41 (CD41 Products)
Background:	Integrin subunit alpha 2b,CD41 (platelet glycoprotein IIb) is composed of two subunits (120 kDa a, alpha and 23 kDa b, beta) that interact with CD61 in the presence of calcium to form a functional adhesive protein receptor. Upon blood vessel damage, this receptor binds to a variety of proteins including von Willebrand factor, fibrinogen, fibronectin and vitronectin. CD41 is mainly expressed on megakaryocyte-platelet lineage, but generally belongs to the antigens that are expressed during early stages of hematopoietic differentiation.,Platelet GPIIb, Integrin alpha-IIb, GPalpha IIb, GTA
Gene ID:	3674
UniProt:	P08514
Pathways:	Integrin Complex

Application Details

Application Notes:	Flow cytometry: The reagent is designed for analysis of human blood cells using 10 µL reagent / 100 µL of whole blood or 10 ⁶ cells in a suspension. The content of a vial (1 ml) is sufficient for 100 tests.
Comment:	The purified antibody is conjugated with cross-linked Allophycocyanin (APC) under optimum conditions. The conjugate is purified by size-exclusion chromatography and adjusted for direct use. No reconstitution is necessary.
Restrictions:	For Research Use only

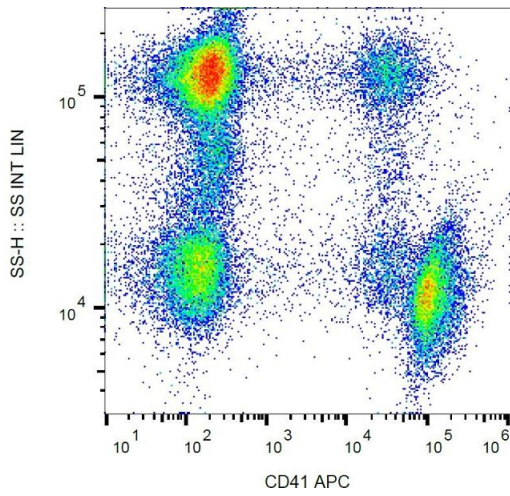
Handling

Reconstitution:	No reconstitution is necessary.
Buffer:	Stabilizing phosphate buffered saline (PBS), pH 7.4, 15 mM sodium azide
Preservative:	Sodium azide
Precaution of Use:	This product contains Sodium azide: a POISONOUS AND HAZARDOUS SUBSTANCE which should be handled by trained staff only.
Handling Advice:	Do not freeze. Avoid prolonged exposure to light.
Storage:	4 °C

Handling

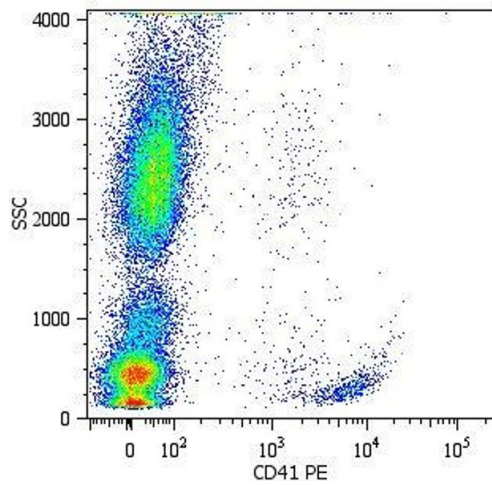
Storage Comment: Store at 2-8°C. Protect from prolonged exposure to light. Do not freeze.

Images



Flow Cytometry

Image 1. Flow cytometry analysis (surface staining) of human peripheral blood with anti-human CD41 (MEM-06) APC.



Flow Cytometry

Image 2. Surface staining of human platelets with anti-human CD41 (MEM-06) PE.