

Datasheet for ABIN192250
anti-IGF2R antibody (APC)[Go to Product page](#)

2 Images

2 Publications

Overview

Quantity:	100 tests
Target:	IGF2R
Reactivity:	Human, Non-Human Primate
Host:	Mouse
Clonality:	Monoclonal
Conjugate:	This IGF2R antibody is conjugated to APC
Application:	Flow Cytometry (FACS)

Product Details

Immunogen:	Recombinant Vaccinia virus encoding CD222.
Clone:	MEM-238
Isotype:	IgG1
Specificity:	The antibody MEM-238 recognizes an extracellular epitope between amino acids 192-697 of CD222 (IGF2 receptor), a ubiquitously expressed 250 kDa multifunctional type I transmembrane protein. The majority of CD222 is found in the late endosomal/prelysosomal compartment, 5-10 % in the plasma membrane and the truncated (220 kDa) form of CD222 is present in human and bovine serum.
Cross-Reactivity (Details):	Human, Non-Human Primates
Purification:	Purified antibody is conjugated with activated allophycocyanin (APC) under optimum conditions and unconjugated antibody and free fluorochrome are removed by size-exclusion chromatography.

Target Details

Target:	IGF2R
Alternative Name:	CD222 (IGF2R Products)
Background:	<p>Insulin like growth factor 2 receptor provided, CD222 (CIMPR, cation-independent mannose 6-phosphate receptor, IGF2 receptor) is a ubiquitously expressed 250 kDa transmembrane protein. No more than 10 % of CD222 is present on the cell surface where it serves as a multifunctional receptor. Intracellular (major) fraction of CD222 is involved in transport of newly synthesized lysosomal enzymes modified by mannose 6-phosphate from Golgi apparatus to lysosomes. The cell surface CD222 binds and internalizes exogenous mannose 6-phosphate-containing ligands. Importantly, CD222 is crucial for internalization and degradation of insulin-like growth factor 2, thus controlling cell growth. CD222 also complexes CD87 (urokinase-type plasminogen-activator receptor), plasminogen and latent TGF-beta, last but not least CD222 serves as a receptor for heparanase and even for Listeria. IGF2R, MPR1, CIMPR, MPR300, M6P-R</p>
Gene ID:	3482
UniProt:	P11717

Application Details

Application Notes:	Flow cytometry: The reagent is designed for analysis of human blood cells using 10 µL reagent / 100 µL of whole blood or 10 ⁶ cells in a suspension. The content of a vial (1 ml) is sufficient for 100 tests. Extracellular and intracellular staining.
Comment:	The purified antibody is conjugated with cross-linked Allophycocyanin (APC) under optimum conditions. The conjugate is purified by size-exclusion chromatography and adjusted for direct use. No reconstitution is necessary.
Restrictions:	For Research Use only

Handling

Reconstitution:	No reconstitution is necessary.
Buffer:	Stabilizing phosphate buffered saline (PBS), pH 7.4, 15 mM sodium azide
Preservative:	Sodium azide
Precaution of Use:	This product contains Sodium azide: a POISONOUS AND HAZARDOUS SUBSTANCE which should be handled by trained staff only.

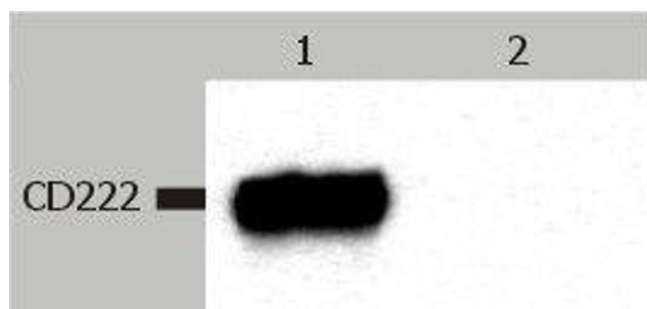
Handling

Handling Advice:	Do not freeze. Avoid prolonged exposure to light.
Storage:	4 °C
Storage Comment:	Store at 2-8°C. Protect from prolonged exposure to light. Do not freeze.

Publications

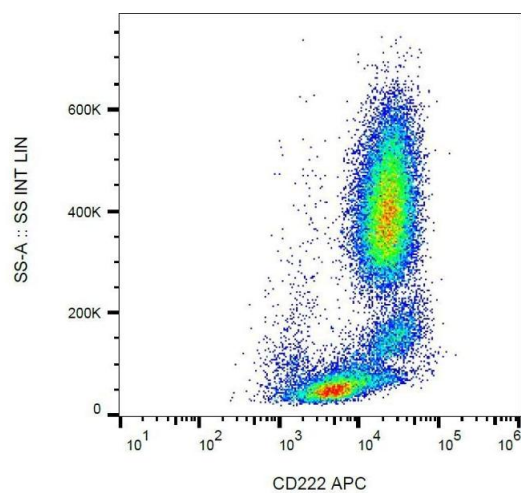
Product cited in:	Schatzmaier, Supper, Göschl, Zwirnitz, Eckerstorfer, Ellmeier, Huppa, Stockinger: "Rapid multiplex analysis of lipid raft components with single-cell resolution." in: Science signaling , Vol. 8, Issue 395, pp. rs11, (2015) (PubMed). Leksa, Godár, Cebecauer, Hilgert, Breuss, Weidle, Horejsí, Binder, Stockinger: "The N terminus of mannose 6-phosphate/insulin-like growth factor 2 receptor in regulation of fibrinolysis and cell migration." in: The Journal of biological chemistry , Vol. 277, Issue 43, pp. 40575-82, (2002) (PubMed).
-------------------	---

Images



Western Blotting

Image 1. Western Blotting analysis (non-reducing conditions) of CD222 in whole cell lysate of JURKAT human peripheral blood T cell leukemia cell line. Lane 1: immunostaining with anti-CD222 (MEM-238) Lane 2: immunostaining with Isotype mouse IgG1 control (PPV-06)



Flow Cytometry

Image 2. Surface staining of human peripheral blood with anti-CD222 (MEM-238) APC.