



[Go to Product page](#)

Datasheet for ABIN192255

## Mouse anti-Human IgE Antibody (FITC)

1 Image

1 Publication

### Overview

Quantity:	0.1 mg
Target:	IgE
Reactivity:	Human
Host:	Mouse
Clonality:	Monoclonal
Conjugate:	FITC
Application:	Flow Cytometry (FACS)

### Product Details

Immunogen:	Purified human IgE.
Clone:	BE5
Isotype:	IgG1
Specificity:	The antibody BE5 reacts with human IgE, it recognizes an epitope different from the ones recognized by 4G7 and 4H10 antibodies to IgE.
Cross-Reactivity (Details):	Human
Purification:	Purified antibody is conjugated with fluorescein isothiocyanate (FITC) under optimum conditions and unconjugated antibody and free fluorochrome are removed by size-exclusion chromatography.

### Target Details

Target:	IgE
---------	-----

## Target Details

---

Abstract:	<a href="#">IgE Products</a>
Background:	Immunoglobulin E (IgE) is a 180 kDa soluble protein serving as an antigen-specific unit of mast cell effector mechanisms. IgE has the lowest serum concentration of all immunoglobulins (approximately 0.5 mg/l) in healthy individuals, but upon allergen challenge its concentration in blood increases dramatically. Although biological survival of free IgE is very short (T1/2 = 2 days), it is stabilized after binding to its high affinity receptor. Unlike IgM- IgG- and IgA-committed B cells, IgE-switched B cells do not undergo clonal expansion.,Immunoglobulin E
Molecular Weight:	180 kDa

## Application Details

---

Application Notes:	Flow cytometry: Recommended dilution: 5 µg/mL.
Comment:	The purified antibody is conjugated with Fluorescein isothiocyanate (FITC) under optimum conditions. The reagent is free of unconjugated FITC.
Restrictions:	For Research Use only

## Handling

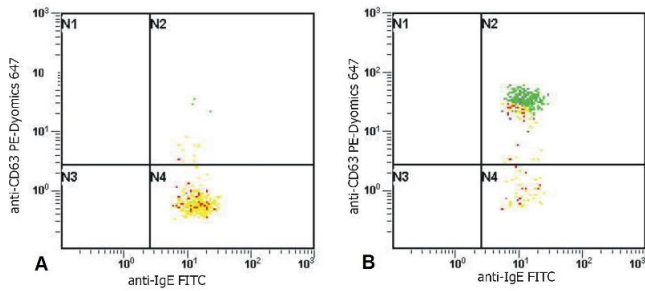
---

Format:	Liquid
Concentration:	0.1 mg/mL
Buffer:	Stabilizing phosphate buffered saline (PBS), pH 7.4, 15 mM sodium azide
Preservative:	Sodium azide
Precaution of Use:	This product contains Sodium azide: a POISONOUS AND HAZARDOUS SUBSTANCE which should be handled by trained staff only.
Handling Advice:	<b>Do not freeze.</b> Avoid prolonged exposure to light.
Storage:	4 °C
Storage Comment:	Store at 2-8°C. Protect from prolonged exposure to light. Do not freeze.

## Publications

---

Product cited in:	Kaufürst-Soboll, Mertens, Brehler, von Schaewen: "Reduction of cross-reactive carbohydrate determinants in plant foodstuff: elucidation of clinical relevance and implications for allergy diagnosis." in: <b>PLoS ONE</b> , Vol. 6, Issue 3, pp. e17800, (2011) ( <a href="#">PubMed</a> ).
-------------------	--



### Flow Cytometry

**Image 1.** Flow cytometry analysis of basophil activation upon stimulation of normal (heparin-treated) whole blood with combination of IL-3 and Goat anti-IgE polyclonal antibody. Combination of anti-human IgE (BE5) FITC and anti-human CD63 (MEM-259) PE-Dyomics 647 (cat. no. ) was used (analysis in basophil window). A - staining of non-stimulated (control) sample 1B - staining of IgE stimulated sample