

Datasheet for ABIN1922575
anti-PDHA1 antibody (AA 39-325)



[Go to Product page](#)

1 Image

Overview

Quantity:	50 µL
Target:	PDHA1
Binding Specificity:	AA 39-325
Reactivity:	Human
Host:	Rabbit
Clonality:	Polyclonal
Conjugate:	This PDHA1 antibody is un-conjugated
Application:	Western Blotting (WB), Immunohistochemistry (IHC), Immunocytochemistry (ICC), Immunohistochemistry (Paraffin-embedded Sections) (IHC (p))

Product Details

Brand:	IHC-plus™
Immunogen:	Recombinant fragment corresponding to a region within amino acids 39 and 325 of (SwissProt P08559). Type of Immunogen: Recombinant protein
Specificity:	Human PDHA1
Purification:	Immunoaffinity purified

Target Details

Target:	PDHA1
---------	-------

Target Details

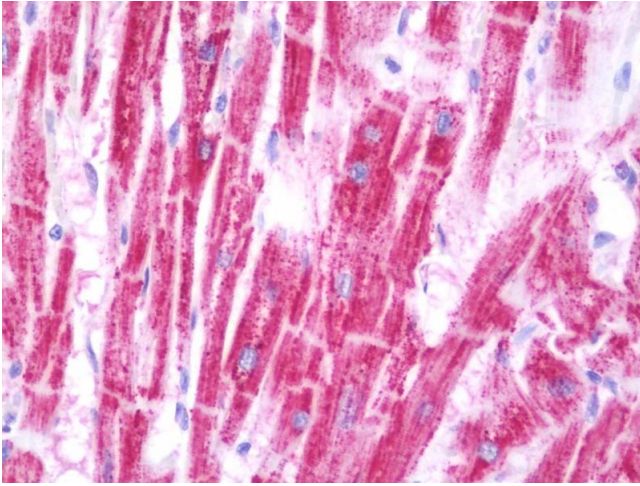
Alternative Name:	PDHA1 / PDH E1 alpha (PDHA1 Products)
Background:	Name/Gene ID: PDHA1 Synonyms: PDHA1, PDHCE1A, PDHA, PHE1A, PDHE1-A type I
Gene ID:	5160
Pathways:	Warburg Effect

Application Details

Application Notes:	Approved: ICC (1:100 - 1:1000), IHC, IHC-P (7.5 µg/mL), WB (1:1000 - 1:10000)
Comment:	Target Species of Antibody: Human
Restrictions:	For Research Use only

Handling

Format:	Liquid
Concentration:	Lot specific
Buffer:	0.1 M Tris-glycine, pH 7.0, 10 % glycerol, 0.01 % Thimerosal
Preservative:	Thimerosal (Merthiolate)
Precaution of Use:	This product contains Thimerosal (Merthiolate): a POISONOUS AND HAZARDOUS SUBSTANCE which should be handled by trained staff only.
Handling Advice:	Avoid multiple freeze-thaw cycles.
Storage:	-20 °C
Storage Comment:	Keep as concentrated solution. Aliquot and store at -20°C or below. Avoid multiple freeze-thaw cycles.



Immunohistochemistry

Image 1. Anti-PDHA1 / PDH E1 Alpha antibody IHC staining of human heart. Immunohistochemistry of formalin-fixed, paraffin-embedded tissue after heat-induced antigen retrieval. Antibody concentration 7.5 ug/ml.