



Datasheet for ABIN192294 **anti-CD52 antibody (FITC)**



[Go to Product page](#)

1 Image

Overview

| | |
|--------------|--|
| Quantity: | 100 tests |
| Target: | CD52 |
| Reactivity: | Human |
| Host: | Mouse |
| Clonality: | Monoclonal |
| Conjugate: | This CD52 antibody is conjugated to FITC |
| Application: | Flow Cytometry (FACS) |

Product Details

| | |
|-----------------------------|--|
| Immunogen: | Human tonsil |
| Clone: | HI186 |
| Isotype: | IgG2b |
| Specificity: | The antibody HI186 reacts with CD52 (CAMPATH-1), a 21-28 kDa extracellular glycoprotein containing a large N-linked carbohydrate moiety, mature CD52 Molecule is actually much smaller (approx. 8-9 kDa). CD52 is expressed at high levels on lymphocytes, monocytes/macrophages and in male reproductive tract. |
| Cross-Reactivity (Details): | Human |
| Purification: | Purified antibody is conjugated with fluorescein isothiocyanate (FITC) under optimum conditions and unconjugated antibody and free fluorochrome are removed by size-exclusion chromatography. |

Target Details

| | |
|-------------------|--|
| Target: | CD52 |
| Alternative Name: | CD52 (CD52 Products) |
| Background: | CD52 Molecule,CD52 (CAMPATH-1, HE5) is a highly glycosylated GPI-anchored 21-28 kDa glycopeptide which is present at high levels on lymphocytes, macrophages, epithelial cells of male reproductive tract and mature sperm. Its 12-amino acid backbone carries a complex N-linked carbohydrate moiety, which differs between sperm and leukocyte CD52, as well as the GPI anchor does. CD52 can be acquired by sperm cells from seminal plasma, where it is released by epithelial cells. Although CD52 is not an essential T-cell costimulator, its triggering results in activation of normal human T cells. CD52 is a very good target for antibody/complement-mediated cell lysis.,CAMPATH-1, HE5, ESPE5 |
| Gene ID: | 1043 |
| UniProt: | P31358 |

Application Details

| | |
|--------------------|---|
| Application Notes: | Flow cytometry: The reagent is designed for analysis of human blood cells using 20 µL reagent / 100 µL of whole blood or 10 ⁶ cells in a suspension. The content of a vial (2 ml) is sufficient for 100 tests. |
| Comment: | The purified antibody is conjugated with Fluorescein isothiocyanate (FITC) under optimum conditions. The reagent is free of unconjugated FITC and adjusted for direct use. No reconstitution is necessary. |
| Restrictions: | For Research Use only |

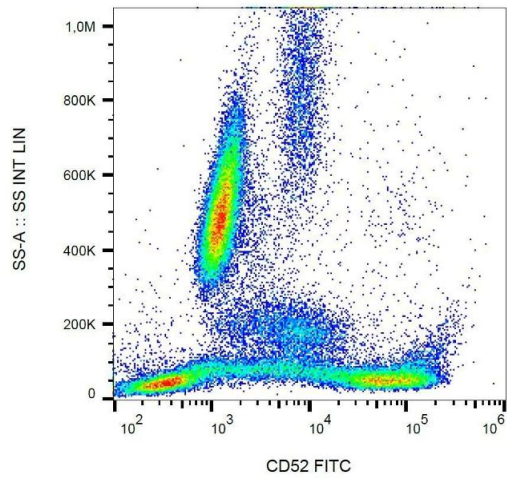
Handling

| | |
|--------------------|--|
| Reconstitution: | No reconstitution is necessary. |
| Buffer: | Stabilizing phosphate buffered saline (PBS), pH 7.4, 15 mM sodium azide |
| Preservative: | Sodium azide |
| Precaution of Use: | This product contains Sodium azide: a POISONOUS AND HAZARDOUS SUBSTANCE which should be handled by trained staff only. |
| Handling Advice: | Do not freeze. Avoid prolonged exposure to light. |
| Storage: | 4 °C |

Handling

Storage Comment: Store at 2-8°C. Protect from prolonged exposure to light. Do not freeze.

Images



Flow Cytometry

Image 1. Surface staining of CD52 in human peripheral blood with anti-CD52 (HI186) FITC.