

Datasheet for ABIN1923233

anti-Prostaglandin E Synthase antibody (Cytoplasmic Domain)[Go to Product page](#)**3** Images

Overview

Quantity:	50 µg
Target:	Prostaglandin E Synthase (PTGES)
Binding Specificity:	Cytoplasmic Domain
Reactivity:	Human, Rabbit
Host:	Rabbit
Clonality:	Polyclonal
Conjugate:	This Prostaglandin E Synthase antibody is un-conjugated
Application:	Immunohistochemistry (IHC), Immunohistochemistry (Paraffin-embedded Sections) (IHC (p))

Product Details

Brand:	IHC-plus™
Immunogen:	Synthetic 13 amino acid peptide from 1st cytoplasmic domain of human PTGES. Percent identity with other species by BLAST analysis: Human, Gorilla, Gibbon, Monkey, Rabbit (100%), Marmoset, Dog, Elephant, Panda, Pike (92%), Bovine, Hamster, Pig, Xenopus (85%). Type of Immunogen: Synthetic peptide
Specificity:	Human PTGES. BLAST analysis of the peptide immunogen showed no homology with other human proteins.
Purification:	Immunoaffinity purified

Target Details

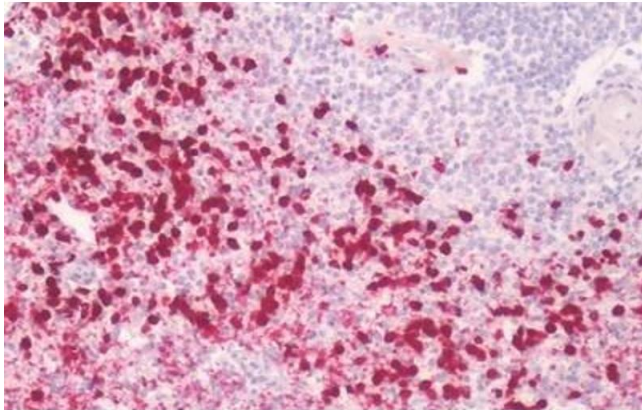
Target:	Prostaglandin E Synthase (PTGES)
Alternative Name:	PGES / PTGES (PTGES Products)
Background:	Name/Gene ID: PTGES Synonyms: PTGES, MGST1-L1, MGST1-like 1, MPGES, MPGES-1, PGES, PIG12, PP102, TP53I12, MGST1L1, MPGES1, PP1294, MGST-IV, p53-induced gene 12 protein, Prostaglandin E synthase
Gene ID:	9536

Application Details

Application Notes:	Approved: IHC, IHC-P (5 - 10 µg/mL) Usage: Immunohistochemistry: This antibody was validated for use in immunohistochemistry on a panel of 21 formalin-fixed, paraffin-embedded (FFPE) human tissues after heat induced antigen retrieval in pH 6.0 citrate buffer. After incubation with the primary antibody, slides were incubated with biotinylated secondary antibody, followed by alkaline phosphatase-streptavidin and chromogen. The stained slides were evaluated by a pathologist to confirm staining specificity. The optimal working concentration for this antibody was determined to be 5 - 10 µg/mL.
Comment:	Target Species of Antibody: Human
Restrictions:	For Research Use only

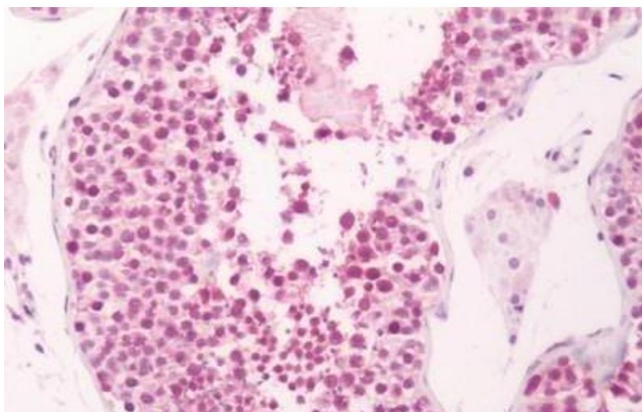
Handling

Format:	Liquid
Concentration:	Lot specific
Buffer:	PBS, less than 0.1 % sodium azide.
Preservative:	Sodium azide
Precaution of Use:	This product contains Sodium azide: a POISONOUS AND HAZARDOUS SUBSTANCE which should be handled by trained staff only.
Storage:	4 °C,-20 °C
Storage Comment:	Aliquot and store undiluted at -20°C or below for up to 1 year. Can be stored undiluted at 4°C for up to 1 month. Avoid freeze-thaw cycles.



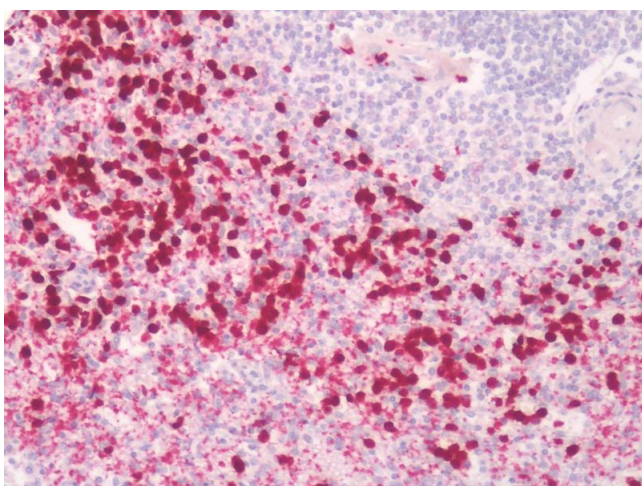
Immunohistochemistry

Image 1. Human Spleen: Formalin-Fixed, Paraffin-Embedded (FFPE)



Immunohistochemistry

Image 2. Human Testis: Formalin-Fixed, Paraffin-Embedded (FFPE)



Immunohistochemistry

Image 3. Human Spleen: Formalin-Fixed, Paraffin-Embedded (FFPE)