



[Go to Product page](#)

Datasheet for ABIN192327

anti-CD235ab antibody (N-Term) (FITC)

1 Image

Overview

| | |
|----------------------|---|
| Quantity: | 100 tests |
| Target: | CD235ab (CD235a + CD235b) |
| Binding Specificity: | N-Term |
| Reactivity: | Human |
| Host: | Mouse |
| Clonality: | Monoclonal |
| Conjugate: | This CD235ab antibody is conjugated to FITC |
| Application: | Flow Cytometry (FACS) |

Product Details

| | |
|-----------------------------|--|
| Immunogen: | Synthetic peptide (Human, N-terminal) |
| Clone: | HIR2 |
| Isotype: | IgG2b |
| Specificity: | The mouse monoclonal antibody HIR2 recognizes an epitope within the N-terminal (extracellular) portion of CD235a (glycophorin A) and CD235b (glycophorin B). Its antigen is expressed on early erythroblasts, late erythroblasts, erythroblasts, mature erythrocytes and the cells of erythroid cell lines K562 and HEL, but not on all other cells. |
| Cross-Reactivity (Details): | Human |
| Purification: | Purified antibody is conjugated with fluorescein isothiocyanate (FITC) under optimum conditions and unconjugated antibody and free fluorochrome are removed by size-exclusion chromatography. |

Target Details

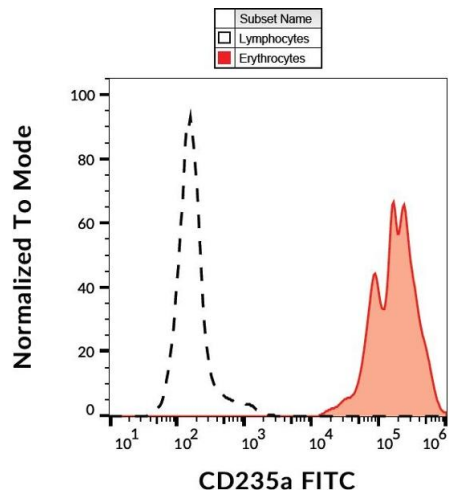
| | |
|-------------------|---|
| Target: | CD235ab (CD235a + CD235b) |
| Alternative Name: | CD235ab (CD235a + CD235b Products) |
| Background: | CD235a (glycophorin A, GPA) is a transmembrane sialoglycoprotein expressed on erythrocytes and their precursors. Similarly to CD235b (glycophorin B, GPB), these molecules provide the cells with a large mucin-like surface, which minimalizes aggregation between erythrocytes in the circulation. GPA is the carrier of blood group M and N specificities, while GPB accounts for S, s and U specificities. CD235a is a receptor of Hsa, a Streptococcus adhesin.,Glycophorin A/B, GYP A/B, GPA/B, PAS-2/3, Sialoglycoprotein alpha/beta, GPSAT, GP E rik, MSN blood group |

Application Details

| | |
|--------------------|---|
| Application Notes: | Flow cytometry: The reagent is designed for analysis of human blood cells using 20 µL reagent / 100 µL of whole blood or 10 ⁶ cells in a suspension. The content of a vial (2 ml) is sufficient for 100 tests. |
| Comment: | The purified antibody is conjugated with Fluorescein isothiocyanate (FITC) under optimum conditions. The reagent is free of unconjugated FITC and adjusted for direct use. No reconstitution is necessary. |
| Restrictions: | For Research Use only |

Handling

| | |
|--------------------|--|
| Reconstitution: | No reconstitution is necessary. |
| Buffer: | Stabilizing phosphate buffered saline (PBS), pH 7.4, 15 mM sodium azide |
| Preservative: | Sodium azide |
| Precaution of Use: | This product contains Sodium azide: a POISONOUS AND HAZARDOUS SUBSTANCE which should be handled by trained staff only. |
| Handling Advice: | Do not freeze. Avoid prolonged exposure to light. |
| Storage: | 4 °C |
| Storage Comment: | Store at 2-8°C. Protect from prolonged exposure to light. Do not freeze. |



Flow Cytometry

Image 1. Flow cytometry analysis (surface staining) of human peripheral blood with anti-CD235ab (HIR2) FITC.