

Datasheet for ABIN192344

anti-L-Selectin antibody (APC)



[Go to Product page](#)

4 Images

4 Publications

Overview

Quantity:	100 tests
Target:	L-Selectin (SELL)
Reactivity:	Human
Host:	Mouse
Clonality:	Monoclonal
Conjugate:	This L-Selectin antibody is conjugated to APC
Application:	Flow Cytometry (FACS)

Product Details

Immunogen:	Peripheral blood leukocytes
Clone:	LT-TD180
Isotype:	IgG1
Specificity:	The antibody LT-TD180 reacts with an extracellular epitope of CD62L (L-selectin), a 74-95 kDa single chain type I glycoprotein expressed on most peripheral blood B lymphocytes, T lymphocytes, monocytes and granulocytes, it is also present on a subset of NK cells and certain hematopoietic malignant cells.
Cross-Reactivity (Details):	Human
Purification:	Purified antibody is conjugated with activated allophycocyanin (APC) under optimum conditions and unconjugated antibody and free fluorochrome are removed by size-exclusion chromatography.

Target Details

Target:	L-Selectin (SELL)
Alternative Name:	CD62L (SELL Products)
Background:	Selectin L,CD62L (L-selectin) is an adhesion glycoprotein that is constitutively expressed on the cell surface of leukocytes and mediates their homing to inflammatory sites and peripheral lymph nodes by enabling rolling along the venular wall. CD62L is also involved in activation-induced neutrophil aggregation. Activation-dependent CD62L shedding, however, counteracts neutrophil rolling. CD62L has also signaling roles including enhance of chemokine receptor expression. Similarly to CD62P, the major ligand of CD62L is PSGL-1 (P-selectin glycoprotein ligand-1).,L-selectin, LSEL, SELL, LAM-1, LECAM1, LEU8, LNHR, LYAM1, PLNHR
Gene ID:	6402
UniProt:	P14151

Application Details

Application Notes:	Flow cytometry: The reagent is designed for analysis of human blood cells using 10 µL reagent / 100 µL of whole blood or 10 ⁶ cells in a suspension. The content of a vial (1 ml) is sufficient for 100 tests.
Comment:	The purified antibody is conjugated with cross-linked Allophycocyanin (APC) under optimum conditions. The conjugate is purified by size-exclusion chromatography and adjusted for direct use. No reconstitution is necessary.
Restrictions:	For Research Use only

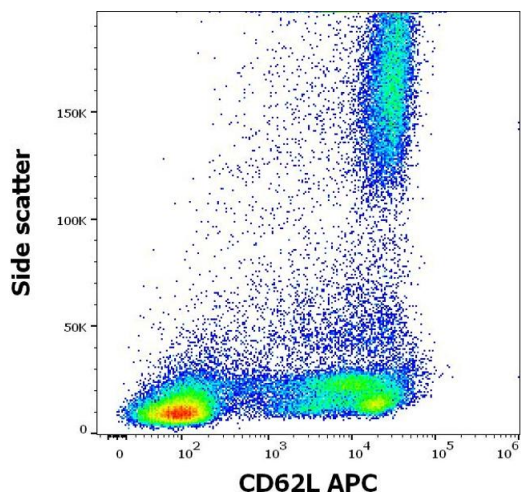
Handling

Reconstitution:	No reconstitution is necessary.
Buffer:	Stabilizing phosphate buffered saline (PBS), pH 7.4, 15 mM sodium azide
Preservative:	Sodium azide
Precaution of Use:	This product contains Sodium azide: a POISONOUS AND HAZARDOUS SUBSTANCE which should be handled by trained staff only.
Handling Advice:	Do not freeze. Avoid prolonged exposure to light.
Storage:	4 °C
Storage Comment:	Store at 2-8°C. Protect from prolonged exposure to light. Do not freeze.

Publications

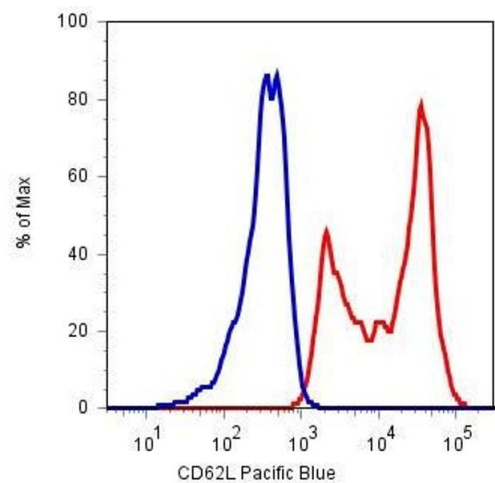
- Product cited in: Cesana, Santoni de Sio, Rudilosso, Gallina, Calabria, Beretta, Merelli, Bruzzesi, Passerini, Nozza, Vicenzi, Poli, Gregori, Tambussi, Montini: "HIV-1-mediated insertional activation of STAT5B and BACH2 trigger viral reservoir in T regulatory cells." in: **Nature communications**, Vol. 8, Issue 1, pp. 498, (2017) ([PubMed](#)).
- Linnebacher, Wienck, Boeck, Klar: "Identification of an MSI-H tumor-specific cytotoxic T cell epitope generated by the (-1) frame of U79260(FTO)." in: **Journal of biomedicine & biotechnology**, Vol. 2010, pp. 841451, (2010) ([PubMed](#)).
- Kuttruff, Koch, Kelp, Pawelec, Rammensee, Steinle: "NKp80 defines and stimulates a reactive subset of CD8 T cells." in: **Blood**, Vol. 113, Issue 2, pp. 358-69, (2009) ([PubMed](#)).
- Simone, Zicca, Saverino: "The frequency of regulatory CD3+CD8+CD28- CD25+ T lymphocytes in human peripheral blood increases with age." in: **Journal of leukocyte biology**, Vol. 84, Issue 6, pp. 1454-61, (2008) ([PubMed](#)).

Images



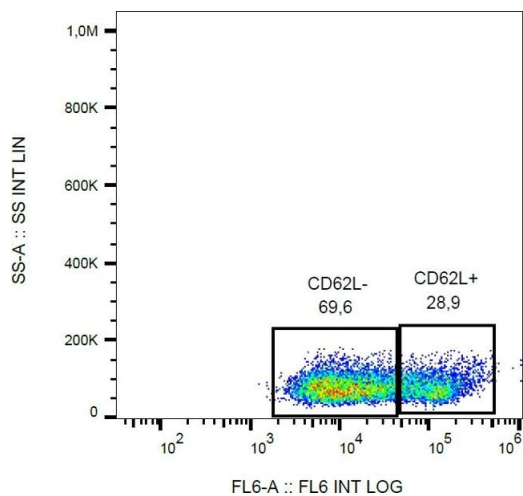
Flow Cytometry

Image 1. Flow cytometry surface staining pattern of human peripheral whole blood stained using anti-human CD62L (LT-TD180) APC antibody (10 μ L reagent / 100 μ L of peripheral whole blood).



Flow Cytometry

Image 2. Surface staining of human peripheral blood cells with anti-CD62L (LT-TD180) Pacific Blue™ (lymphocyte gate).



Flow Cytometry

Image 3. Flow cytometry analysis (surface staining) of human peripheral blood cells with anti-CD62L (LT-TD180) APC.

Please check the [product details page](#) for more images. Overall 4 images are available for ABIN192344.