



[Go to Product page](#)

Datasheet for ABIN1923473

anti-PHF14 antibody (N-Term)

1 Image

Overview

Quantity:	0.05 mg
Target:	PHF14
Binding Specificity:	N-Term
Reactivity:	Human, Mouse, Rat
Host:	Rabbit
Clonality:	Polyclonal
Conjugate:	This PHF14 antibody is un-conjugated
Application:	Western Blotting (WB), ELISA, Immunofluorescence (IF), Immunohistochemistry (IHC), Immunohistochemistry (Paraffin-embedded Sections) (IHC (p))

Product Details

Brand:	IHC-plus™
Isotype:	IgG
Specificity:	PHF14 antibody is human, mouse and rat reactive. Multiple isoforms of PHF14 are known to exist.
Purification:	Immunoaffinity purified

Target Details

Target:	PHF14
Alternative Name:	PHF14 (PHF14 Products)

Target Details

Background: Name/Gene ID: PHF14
Synonyms: PHF14, KIAA0783, PHD finger protein 14

Gene ID: 9678

Application Details

Application Notes: Approved: ELISA, IF (5 µg/mL), IHC, IHC-P (10 µg/mL), WB (1 µg/mL)

Comment: Target Species of Antibody: Human

Restrictions: For Research Use only

Handling

Format: Liquid

Concentration: Lot specific

Buffer: PBS, 0.02 % sodium azide.

Preservative: Sodium azide

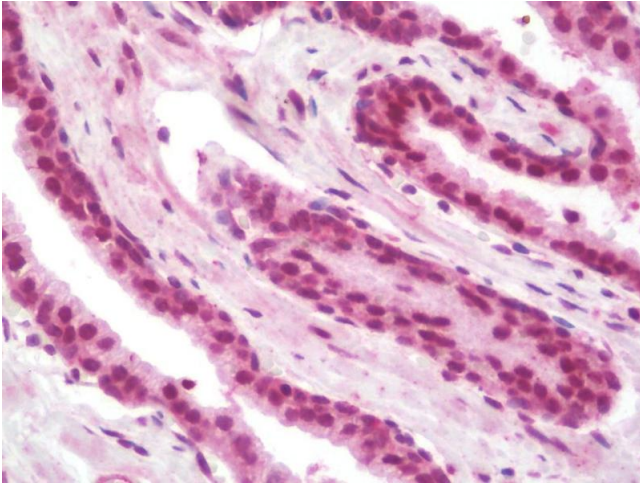
Precaution of Use: This product contains Sodium azide: a POISONOUS AND HAZARDOUS SUBSTANCE which should be handled by trained staff only.

Handling Advice: Avoid repeat freeze-thaw cycles.

Storage: 4 °C, -20 °C

Storage Comment: Store at 4°C for 3 months and -20°C, stable for up to 1 year. Avoid repeated freeze-thaw cycles.

Expiry Date: 12 months



Immunohistochemistry

Image 1. Anti-PHF14 antibody IHC staining of human prostate. Immunohistochemistry of formalin-fixed, paraffin-embedded tissue after heat-induced antigen retrieval. Antibody concentration 10 ug/ml.