

Datasheet for ABIN192390

anti-PLSCR1 antibody[Go to Product page](#)

4 Images

1 Publication

Overview

Quantity:	0.1 mL
Target:	PLSCR1
Reactivity:	Rat
Host:	Mouse
Clonality:	Monoclonal
Conjugate:	This PLSCR1 antibody is un-conjugated
Application:	Western Blotting (WB), Immunoprecipitation (IP), Flow Cytometry (FACS), Immunocytochemistry (ICC)

Product Details

Immunogen:	Pooled lipid raft fraction isolated from RBL-2H3 cells
Clone:	13A6 [TEC-23]
Isotype:	IgG2a
Specificity:	The antibody 13A6 [TEC-23] binds to an intracellular epitope of rat Phospholipid Scramblase 1 (PLSCR1), an 37-49 kDa protein, accelerating bidirectional movement of plasma membrane phospholipids under conditions of elevated calcium.
Cross-Reactivity (Details):	Rat

Target Details

Target:	PLSCR1
Alternative Name:	PLSCR1 (PLSCR1 Products)

Target Details

Background:	Phospholipid scramblase 1,PLSCR1 (phospholipid scramblase 1) is a multiply palmitoylated endofacial plasma membrane protein containing several SH3 and WW domain binding motives. In the plasma membrane, PLSCR1 plays a role in transbilayer lipid redistributions and signal transduction. Nonpalmitoylated PLSCR1, however, is able to be transported into the nucleus and bind DNA. PLSCR1 potentiates the antiviral activity of interferon and its expression is highly induced by interferons and growth factors.,PL scramblase 1, phospholipid scramblase 1
Gene ID:	117540
UniProt:	P58195
Pathways:	Cellular Response to Molecule of Bacterial Origin

Application Details

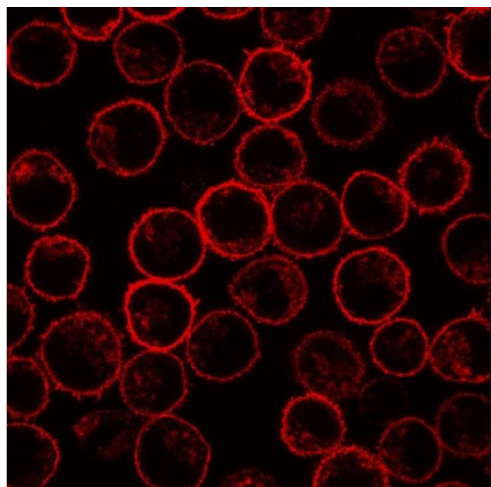
Application Notes:	Western blotting: Recommended dilution: 1 µg/mL, positive control: RBL (rat basophilic leukemia) cell line, both reducing and non-reducing conditions. Flow cytometry: Intracellular staining.
Restrictions:	For Research Use only

Handling

Format:	Liquid
Buffer:	Stabilized with 15 mM sodium azide.
Preservative:	Sodium azide
Precaution of Use:	This product contains Sodium azide: a POISONOUS AND HAZARDOUS SUBSTANCE which should be handled by trained staff only.
Handling Advice:	Do not freeze. Avoid prolonged exposure to light.
Storage:	4 °C
Storage Comment:	Store at 2-8°C. Do not freeze.

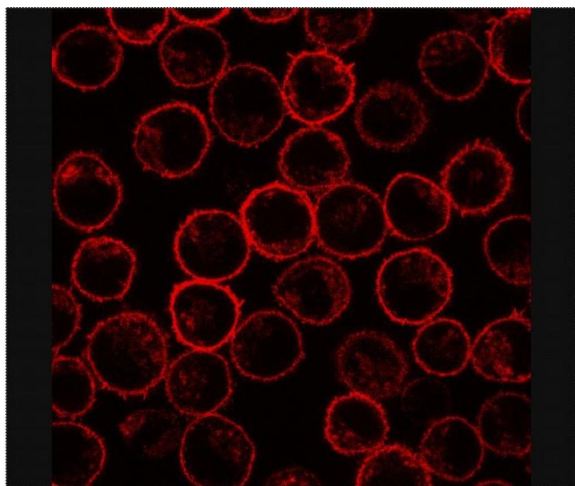
Publications

Product cited in:	Smrz, Lebduska, Dráberová, Korb, Dráber: "Engagement of phospholipid scramblase 1 in activated cells: implication for phosphatidylserine externalization and exocytosis." in: The Journal of biological chemistry , Vol. 283, Issue 16, pp. 10904-18, (2008) (PubMed).
-------------------	---



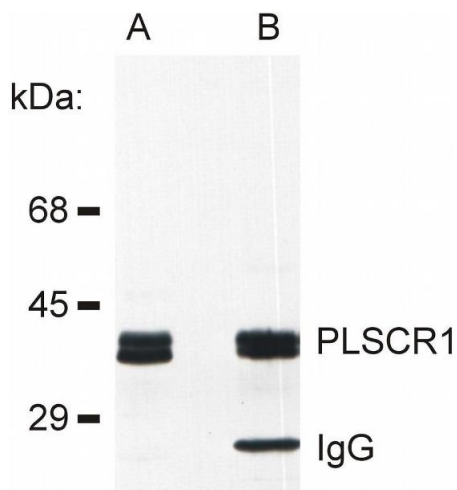
Immunocytochemistry

Image 1. Immunofluorescence staining of PLSCR1 in rat basophilic leukemia (RBL) cell line using 13A6 (Tec-23) antibody.



Immunofluorescence

Image 2. Immunofluorescence staining of PLSCR1 in rat basophilic leukemia (RBL) cell line using antibody.



Immunoprecipitation

Image 3. Detection of PLSCR1 in rat basophilic leukemia (RBL) cell line lysate (A) and in PLSCR1 immunoprecipitate from RBL lysate (B). The antibody 13A6 (Tec-23) was used both for immunoprecipitation and immunodetection.

Please check the [product details page](#) for more images. Overall 4 images are available for ABIN192390.