

Datasheet for ABIN192394
anti-STIM1 antibody (C-Term)[Go to Product page](#)

3 Images

2 Publications

Overview

Quantity:	0.1 mg
Target:	STIM1
Binding Specificity:	C-Term
Reactivity:	Human, Rat, Mouse
Host:	Mouse
Clonality:	Monoclonal
Conjugate:	This STIM1 antibody is un-conjugated
Application:	Western Blotting (WB), Immunohistochemistry (Paraffin-embedded Sections) (IHC (p)), Immunoprecipitation (IP), Immunocytochemistry (ICC)

Product Details

Immunogen:	Synthesized peptide (C-terminal cytoplasmic part of STIM1).
Clone:	CDN3H4
Isotype:	IgG1
Specificity:	The mouse monoclonal antibody CDN3H4 reacts with a cytoplasmic epitope of human and rodent STIM1, a 84 kDa essential and conserved regulator of store-operated Ca ²⁺ channel function.
Cross-Reactivity (Details):	Human, Mouse, Rat
Purification:	Purified by protein-A affinity chromatography.
Purity:	> 95 % (by SDS-PAGE)

Target Details

Target:	STIM1
Alternative Name:	STIM1 (STIM1 Products)
Background:	Stromal interaction molecule 1,STIM1 (stromal interacting molecule, also known as GOK) acts as a sensor of calcium depletion within the endoplasmic reticulum and transduces the signal to Orai1, the presumptive CRAC channel at the plasma membrane. Following decrease of luminal calcium concentration, STIM1 oligomerizes and induces Orai1 to enable entry of extracellular calcium into the cytoplasm. However, the precise mechanism of STIM1-Orai1 interaction has not been elucidated yet. Many questions also remain to be solved around STIM1 functional distribution. It turns out that STIM1 associates with growing ends of microtubules and is involved in endoplasmic reticulum tubule extension.,GOK, TAM1, STRMK
Gene ID:	6786
UniProt:	G0XQ39
Pathways:	TCR Signaling , BCR Signaling

Application Details

Application Notes:	Immunocytochemistry: Methanol-aceton fixation, positive control: HeLa human cervix carcinoma cell line. Immunohistochemistry (paraffin sections): Recommended dilution: 5 µg/mL. Western blotting: Recommended dilution: 1 µg/mL, positive control: RBL rat basophilic leukemia cell line, both reducing and non-reducing conditions.
Restrictions:	For Research Use only

Handling

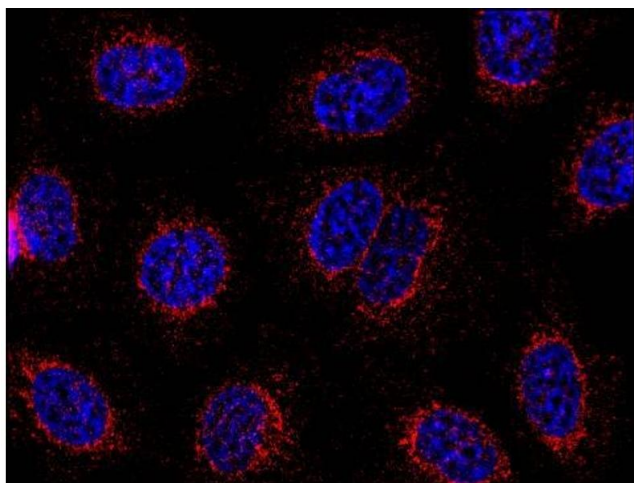
Concentration:	1 mg/mL
Buffer:	Phosphate buffered saline (PBS), pH 7.4, 15 mM sodium azide
Preservative:	Sodium azide
Precaution of Use:	This product contains Sodium azide: a POISONOUS AND HAZARDOUS SUBSTANCE which should be handled by trained staff only.
Handling Advice:	Do not freeze.
Storage:	4 °C
Storage Comment:	Store at 2-8°C. Do not freeze.

Publications

Product cited in: Hájková, Bugajev, Dráberová, Vinopal, Dráberová, Janáček, Dráber, Dráber: "STIM1-directed reorganization of microtubules in activated mast cells." in: **Journal of immunology (Baltimore, Md. : 1950)**, Vol. 186, Issue 2, pp. 913-23, (2011) ([PubMed](#)).

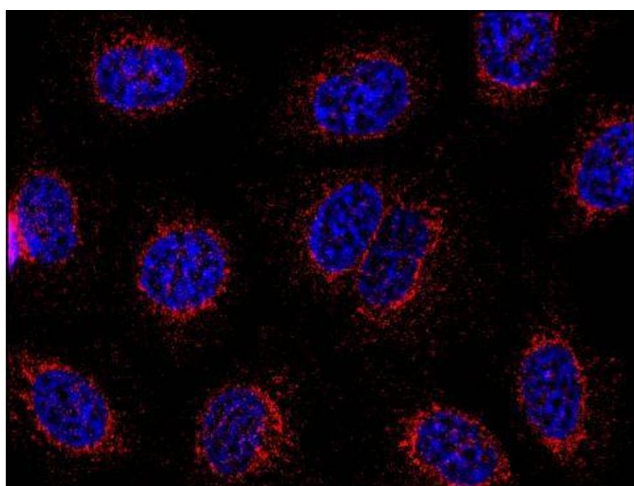
Ng, Ramduny, Airey, Singer, Keller, Shen, Tian, Valencik, Hume: "Orai1 interacts with STIM1 and mediates capacitative Ca²⁺ entry in mouse pulmonary arterial smooth muscle cells." in: **American journal of physiology. Cell physiology**, Vol. 299, Issue 5, pp. C1079-90, (2010) ([PubMed](#)).

Images



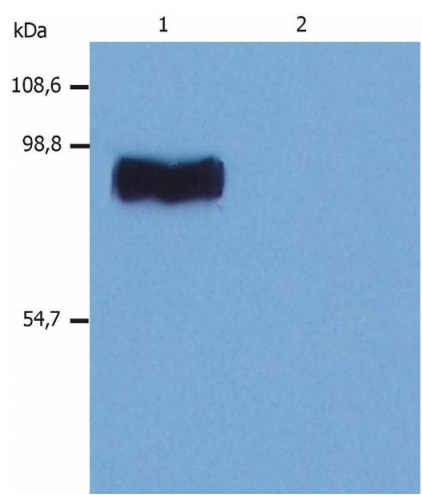
Immunocytochemistry

Image 1. Immunocytochemistry staining of HeLa human cervix carcinoma cell line using anti-STIM1 (CDN3H4, methanol-aceton fixation, detection by Goat anti-mouse IgG1 Alexa Fluor 598, red). Nuclei were stained with DAPI (blue).



Immunofluorescence

Image 2. Immunofluorescence staining of HeLa human cervix carcinoma cell line using anti-STIM1 (CDN3H4 ; methanol-aceton fixation; detection by Goat anti-mouse IgG1 Alexa Fluor® 598; red). Nuclei were stained with DAPI (blue).



Western Blotting

Image 3. Western Blotting analysis (non-reducing conditions) of whole cell lysate of RBL rat basophilic leukemia cell line. Lane 1: immunostaining with anti-STIM1 () Lane 2: immunostaining with Isotype mouse IgG1 control (PPV-06