

Datasheet for ABIN192408

anti-CD300a antibody

2 Images

[Go to Product page](#)

Overview

Quantity:	0.1 mg
Target:	CD300a (CD300A)
Reactivity:	Human
Host:	Mouse
Clonality:	Monoclonal
Conjugate:	This CD300a antibody is un-conjugated
Application:	Flow Cytometry (FACS), Western Blotting (WB)

Product Details

Immunogen:	HPB human acute lymphoid leukemia cell line
Clone:	MEM-260
Isotype:	IgG1
Specificity:	The antibody MEM-260 reacts with an extracellular epitope of CD300a, a 60 kDa leukocyte transmembrane glycoprotein expressed on human granulocytes, monocytes, neutrophils, NK cells, mast cells and dendritic cells, 25 % of circulating T cells and 15 % of circulating B cells.
Cross-Reactivity (Details):	Human
Purification:	Purified by protein-A affinity chromatography.
Purity:	> 95 % (by SDS-PAGE)

Target Details

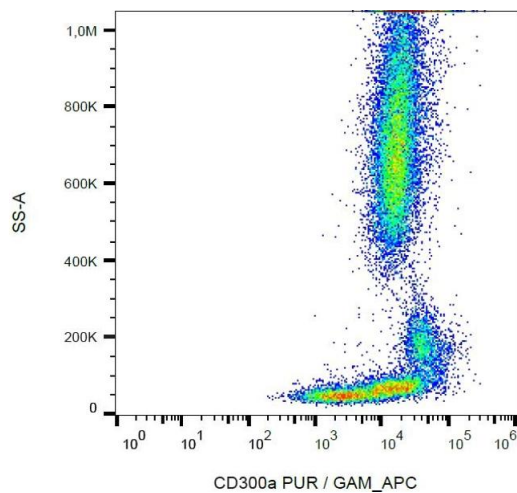
Target:	CD300a (CD300A)
Alternative Name:	CD300a (CD300A Products)
Background:	CD300a molecule,CD300a (CMRF-35H, IRp60) is a non-MHC-specific inhibitory receptor of immunoglobulin superfamily, which contains three immunoreceptor tyrosine-based inhibitory motifs (ITIMs) that associate with SH2-containing phosphatases SHP-1 and SHP-2. CD300a is expressed on many cell types including T cells, NK cells, neutrophils, eosinophils or mast cells. Its triggering inhibits activating signals such as those of IL5, GM-CSF or eotaxin, as well as supresses mast cell degranulation or NK cell cytotoxic activity.,IRC, CLM-8, IGSF12, CMRF35H
Gene ID:	11314
UniProt:	Q9UGN4
Pathways:	Regulation of Leukocyte Mediated Immunity , Positive Regulation of Immune Effector Process

Application Details

Application Notes:	Flow cytometry: Recommended dilution: 2 µg/mL. Western blotting: Positive material: HPB cell line, negative material: JURKAT human cell line, RAJI human cell line, non-reducing conditions.
Restrictions:	For Research Use only

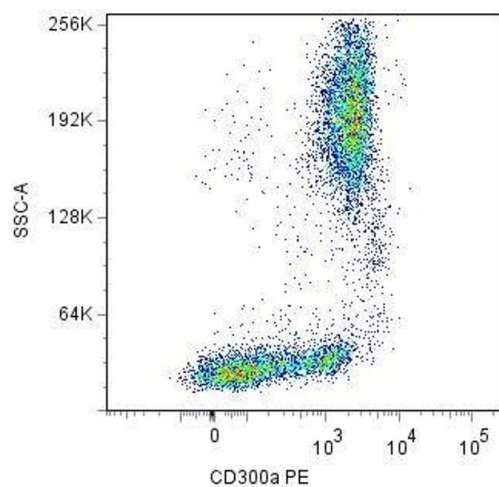
Handling

Concentration:	1 mg/mL
Buffer:	Phosphate buffered saline (PBS), pH 7.4, 15 mM sodium azide
Preservative:	Sodium azide
Precaution of Use:	This product contains Sodium azide: a POISONOUS AND HAZARDOUS SUBSTANCE which should be handled by trained staff only.
Handling Advice:	Do not freeze.
Storage:	4 °C
Storage Comment:	Store at 2-8°C. Do not freeze.



Flow Cytometry

Image 1. Flow cytometry analysis (surface staining) of human peripheral blood cells with anti-CD300a (MEM-260) purified, GAM-APC.



Flow Cytometry

Image 2. Surface staining of human peripheral blood cells with anti-CD300a (MEM-260) PE.