

Datasheet for ABIN1925493
anti-PPP2CB antibody (FITC)[Go to Product page](#)

1 Image

Overview

Quantity:	100 µg
Target:	PPP2CB
Reactivity:	Human
Host:	Rabbit
Clonality:	Polyclonal
Conjugate:	This PPP2CB antibody is conjugated to FITC
Application:	Western Blotting (WB), ELISA, Immunohistochemistry (IHC), Immunohistochemistry (Paraffin-embedded Sections) (IHC (p))

Product Details

Immunogen:	Recombinant human Serine/threonine-protein phosphatase 2A catalytic subunit beta isoform protein. Type of Immunogen: Recombinant protein
Isotype:	IgG
Specificity:	Human PP2CB / PPP2CB
Purification:	Caprylic acid and ammonium sulfate precipitation

Target Details

Target:	PPP2CB
Alternative Name:	PP2CB / PPP2CB (PPP2CB Products)

Target Details

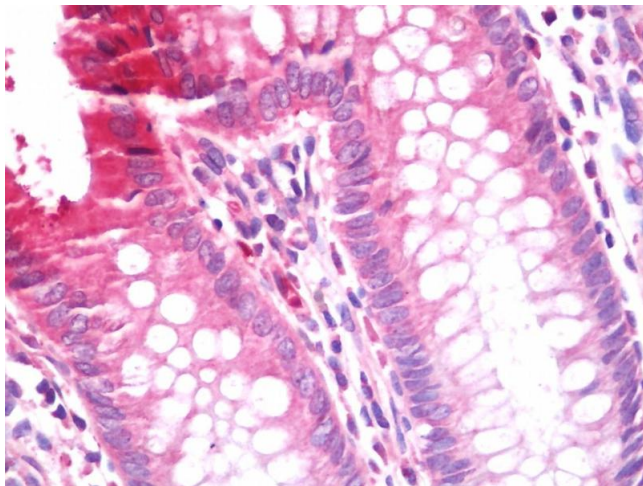
Background:	Name/Gene ID: PPP2CB
	Subfamily: PP2A
	Family: Protein Phosphatase
	Synonyms: PPP2CB, PP2Abeta, Protein phosphatase 2A beta, PP2CB, PP2A-beta, pp2a2
Gene ID:	5516
Pathways:	Mitotic G1-G1/S Phases , Hepatitis C , Toll-Like Receptors Cascades

Application Details

Application Notes:	Approved: ELISA, IHC, IHC-P, WB
	Usage: The applications listed have been tested for the unconjugated form of this product. Other forms have not been tested.
Comment:	Target Species of Antibody: Human
Restrictions:	For Research Use only

Handling

Format:	Liquid
Concentration:	Lot specific
Buffer:	PBS, pH 7.4, 0.03 % Proclin 300, 50 % glycerol.
Preservative:	ProClin
Precaution of Use:	This product contains ProClin: a POISONOUS AND HAZARDOUS SUBSTANCE which should be handled by trained staff only.
Handling Advice:	Avoid freeze-thaw cycles.
Storage:	-20 °C, -80 °C
Storage Comment:	Aliquot and store at -20°C or -80°C. Avoid freeze-thaw cycles.



Immunohistochemistry

Image 1. Anti-PP2CB / PPP2CB antibody IHC staining of human colon. Immunohistochemistry of formalin-fixed, paraffin-embedded tissue after heat-induced antigen retrieval. Antibody concentration 20 ug/ml. This image was taken for the unconjugated form of this ...