

Datasheet for ABIN1925752
anti-PPM1F antibody (AA 275-303) (HRP)[Go to Product page](#)

1 Image

Overview

Quantity:	200 µL
Target:	PPM1F
Binding Specificity:	AA 275-303
Reactivity:	Human
Host:	Rabbit
Clonality:	Polyclonal
Conjugate:	This PPM1F antibody is conjugated to HRP
Application:	Western Blotting (WB), ELISA, Immunohistochemistry (IHC), Immunohistochemistry (Paraffin-embedded Sections) (IHC (p))

Product Details

Isotype:	IgG
Specificity:	This PPM1F antibody is generated from rabbits immunized with a KLH conjugated synthetic peptide between 275-303 amino acids from the Central region of human PPM1F.
Purification:	Affinity purified

Target Details

Target:	PPM1F
Alternative Name:	PPM1F (PPM1F Products)
Background:	Name/Gene ID: PPM1F Subfamily: PP2C

Target Details

Family: Protein Phosphatase

Synonyms: PPM1F, CAMKP, CaMKPase, FEM-2, PP2C phosphatase, Protein fem-2 homolog, Protein phosphatase 1F, POPX2, CaM-kinase phosphatase, HFEM-2, KIAA0015, Partner of PIX 2

Gene ID: 9647

Pathways: [Positive Regulation of Endopeptidase Activity](#)

Application Details

Application Notes: Approved: ELISA, IHC, IHC-P, WB

Usage: The applications listed have been tested for the base form of this product. Alternate forms, such as conjugated, azide-free, or ready-to-use, have not been tested.

Comment: Target Species of Antibody: Human

Restrictions: For Research Use only

Handling

Format: Liquid

Concentration: Lot specific

Buffer: PBS, no preservatives added

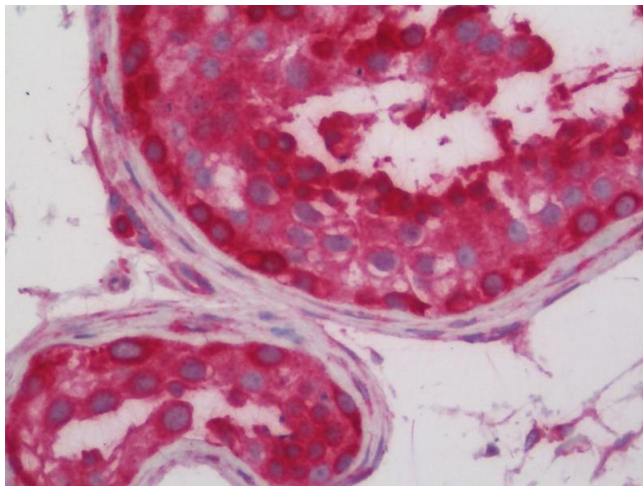
Preservative: Without preservative

Handling Advice: Aliquot to avoid repeated freezing and thawing.

Storage: 4 °C, -20 °C

Storage Comment: Short term: store at 4°C. Long term: aliquot and store -20°C for up to 6 months. Avoid freeze-thaw cycles. Protect from light.

Expiry Date: 6 months



Immunohistochemistry (Paraffin-embedded Sections)

Image 1. Human Testis: Formalin-Fixed, Paraffin-Embedded (FFPE). This image was taken for the unconjugated form of this product. Other forms have not been tested.