

Datasheet for ABIN1926421
anti-PRICKLE2 antibody (Internal Region)



[Go to Product page](#)

1 Image

Overview

Quantity:	0.05 mg
Target:	PRICKLE2
Binding Specificity:	Internal Region
Reactivity:	Human, Mouse, Rat
Host:	Rabbit
Clonality:	Polyclonal
Conjugate:	This PRICKLE2 antibody is un-conjugated
Application:	Western Blotting (WB), ELISA, Immunofluorescence (IF), Immunohistochemistry (IHC), Immunohistochemistry (Paraffin-embedded Sections) (IHC (p))

Product Details

Brand:	IHC-plus™
Isotype:	IgG
Specificity:	Two isoforms of PRICKLE2 are known to exist. PRICKLE2 antibody is predicted to not cross-react with other PRICKLE protein family members.
Purification:	Immunoaffinity purified

Target Details

Target:	PRICKLE2
Alternative Name:	PRICKLE2 (PRICKLE2 Products)

Target Details

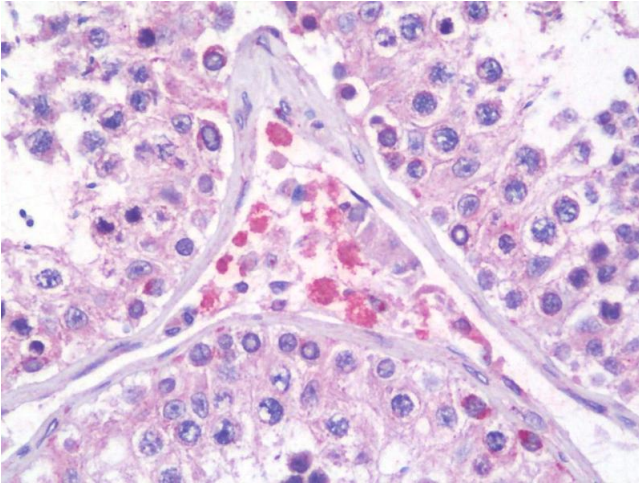
Background:	Name/Gene ID: PRICKLE2 Synonyms: PRICKLE2, EPM5, Prickle homolog 2 (Drosophila), Prickle-like protein 2, Prickle-like 2 (Drosophila)
Gene ID:	166336

Application Details

Application Notes:	Approved: ELISA, IF (20 µg/mL), IHC, IHC-P (5 µg/mL), WB (1 µg/mL)
Comment:	Target Species of Antibody: Human
Restrictions:	For Research Use only

Handling

Format:	Liquid
Concentration:	Lot specific
Buffer:	PBS, 0.02 % sodium azide
Preservative:	Sodium azide
Precaution of Use:	This product contains Sodium azide: a POISONOUS AND HAZARDOUS SUBSTANCE which should be handled by trained staff only.
Handling Advice:	avoid freeze thaw cycles
Storage:	4 °C,-20 °C
Storage Comment:	Store at 4°C for 3 months and -20°C, stable for up to 1 year. Avoid repeated freeze-thaw cycles.
Expiry Date:	12 months



Immunohistochemistry

Image 1. Anti-PRICKLE2 antibody IHC staining of human testis. Immunohistochemistry of formalin-fixed, paraffin-embedded tissue after heat-induced antigen retrieval. Antibody concentration 5 ug/ml.