



[Go to Product page](#)

Datasheet for ABIN1927310
anti-PRUNE antibody (AA 360-389)

1 Image

Overview

Quantity:	200 µL
Target:	PRUNE
Binding Specificity:	AA 360-389
Reactivity:	Human
Host:	Rabbit
Clonality:	Polyclonal
Conjugate:	This PRUNE antibody is un-conjugated
Application:	Western Blotting (WB), Immunohistochemistry (IHC), Flow Cytometry (FACS), Immunohistochemistry (Paraffin-embedded Sections) (IHC (p))

Product Details

Brand:	IHC-plus™
Specificity:	This PRUNE antibody is generated from rabbits immunized with a KLH conjugated synthetic peptide between 360-389 amino acids from the C-terminal region of human PRUNE.
Purification:	Protein A purified

Target Details

Target:	PRUNE
Alternative Name:	PRUNE (PRUNE Products)
Background:	Name/Gene ID: PRUNE

Target Details

Synonyms: PRUNE, BMCC1, HPrune, HTCD37, KIAA0367, Protein prune homolog, Prune homolog (Drosophila), DRES-17, DRES17

Gene ID: 58497

Application Details

Application Notes: Approved: Flo (1:10 - 1:50), IHC, IHC-P (1:75), WB (1:1000)

Comment: Target Species of Antibody: Human

Restrictions: For Research Use only

Handling

Format: Liquid

Concentration: Lot specific

Buffer: PBS, 0.09 % sodium azide

Preservative: Sodium azide

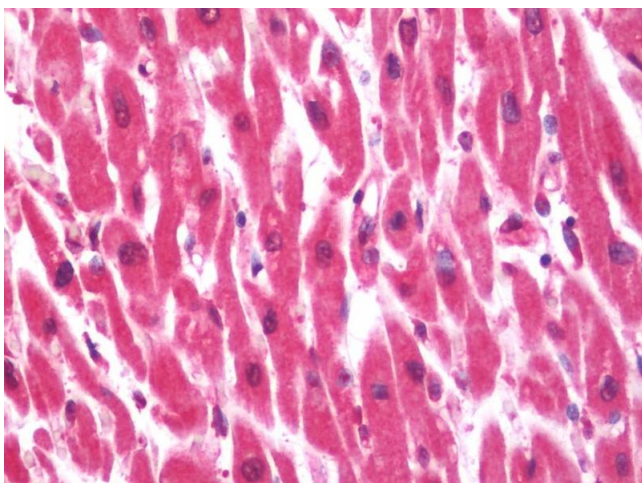
Precaution of Use: This product contains Sodium azide: a POISONOUS AND HAZARDOUS SUBSTANCE which should be handled by trained staff only.

Storage: 4 °C, -20 °C

Storage Comment: Maintain refrigerated at 2-8°C for up to 6 months. For long term storage store at -20°C.

Expiry Date: 6 months

Images



Immunohistochemistry

Image 1. Anti-PRUNE antibody IHC staining of human heart. Immunohistochemistry of formalin-fixed, paraffin-embedded tissue after heat-induced antigen retrieval. Antibody dilution 1:75.