



[Go to Product page](#)

Datasheet for ABIN1927341
anti-PSAT1 antibody (AA 48-328)

2 Images

Overview

Quantity:	50 µL
Target:	PSAT1
Binding Specificity:	AA 48-328
Reactivity:	Human, Mouse
Host:	Rabbit
Clonality:	Polyclonal
Conjugate:	This PSAT1 antibody is un-conjugated
Application:	Western Blotting (WB), Immunohistochemistry (IHC), Immunocytochemistry (ICC), Immunohistochemistry (Paraffin-embedded Sections) (IHC (p))

Product Details

Brand:	IHC-plus™
Immunogen:	Recombinant fragment corresponding to a region within amino acids 48 and 328 of PSAT1 (SwissProt Q9Y617). Percent identity by BLAST analysis: Human (100%), Rat, Bovine (95%), Rabbit (94%), Xenopus (82%). Type of Immunogen: Recombinant protein
Isotype:	IgG
Specificity:	Human PSAT1
Purification:	Immunoaffinity purified

Target Details

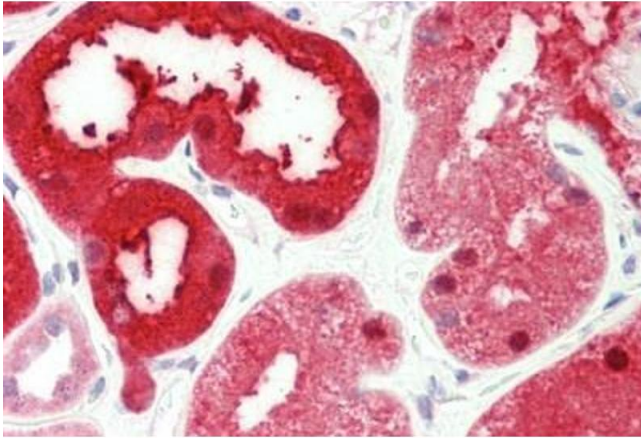
Target:	PSAT1
Alternative Name:	PSAT1 (PSAT1 Products)
Background:	Name/Gene ID: PSAT1 Synonyms: PSAT1, EPIP, Phosphoserine aminotransferase, PSA, PSAT
Gene ID:	29968
Pathways:	Warburg Effect

Application Details

Application Notes:	Approved: ICC (1:100 - 1:1000), IHC, IHC-P (5 µg/mL), WB (1:500 - 1:3000) Usage: IHC-paraffin: Suggested antigen retrieval using heat mediated 10 mM Citrate buffer (pH 6.0) or Tris-EDTA buffer (pH 8.0).
Comment:	Target Species of Antibody: Human
Restrictions:	For Research Use only

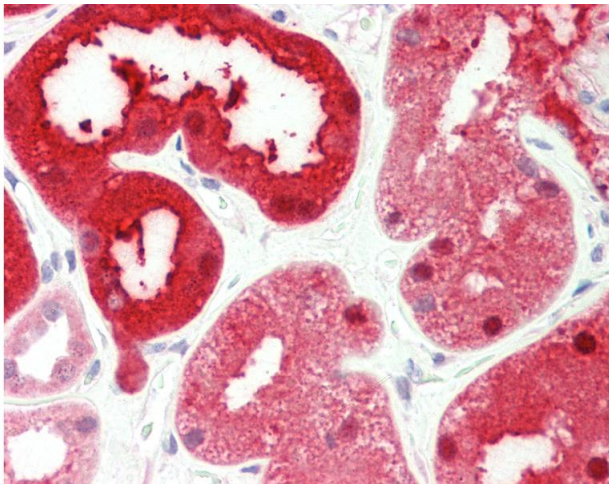
Handling

Format:	Liquid
Concentration:	Lot specific
Buffer:	0.1 M Tris-glycine, pH 7.0, 10 % glycerol, 0.01 % Thimerosal
Preservative:	Thimerosal (Merthiolate)
Precaution of Use:	This product contains Thimerosal (Merthiolate): a POISONOUS AND HAZARDOUS SUBSTANCE which should be handled by trained staff only.
Handling Advice:	Avoid multiple freeze-thaw cycles.
Storage:	-20 °C
Storage Comment:	Keep as concentrated solution. Aliquot and store at -20°C or below. Avoid multiple freeze-thaw cycles.



Immunohistochemistry

Image 1. Human Kidney: Formalin-Fixed, Paraffin-Embedded (FFPE)



Immunohistochemistry

Image 2. Anti-PSAT1 antibody IHC staining of human kidney. Immunohistochemistry of formalin-fixed, paraffin-embedded tissue after heat-induced antigen retrieval. Antibody concentration 5 ug/ml.