

Datasheet for ABIN1927748
anti-Patched 1 antibody (Cytoplasmic Domain)



[Go to Product page](#)

1 Image

Overview

Quantity:	50 µg
Target:	Patched 1 (PTCH1)
Binding Specificity:	Cytoplasmic Domain
Reactivity:	Human, Mouse
Host:	Rabbit
Clonality:	Polyclonal
Conjugate:	This Patched 1 antibody is un-conjugated
Application:	Western Blotting (WB), Immunohistochemistry (IHC), Immunohistochemistry (Paraffin-embedded Sections) (IHC (p))

Product Details

Brand:	IHC-plus™
Immunogen:	Linear peptide corresponding to the cytoplasmic domain of human Protein patched homolog 1 (KLH).
Isotype:	IgG
Specificity:	Recognizes human Protein patched homolog 1 at ~160kD. Species cross-reactivity: mouse.
Purification:	Affinity purified

Target Details

Target:	Patched 1 (PTCH1)
---------	-------------------

Target Details

Alternative Name: PTCH1 / Patched ([PTCH1 Products](#))

Background: Name/Gene ID: PTCH1

Synonyms: PTCH1, NBCCS, Patched 1, Patched homolog 1, Protein patched homolog 1, PTC1, PTCH, PTCH protein +12b, PTCH protein -10, PTCH protein -3,4,5, Patched, Patched protein homolog 1, BCNS, HPE7, Patched homolog, PTC, PTCH protein +4, PTCH11

Gene ID: 5727

Pathways: [Hedgehog Signaling](#), [Carbohydrate Homeostasis](#), [Tube Formation](#)

Application Details

Application Notes: Approved: IHC, IHC-P (10 µg/mL), WB (0.1 µg/mL)

Usage: Suitable for use in Western Blot and Immunohistochemistry. Western Blot: 0.1 µg/mL detected Patched on 10 µg of human skeletal muscle, fetal tissue lysate. Heat induced epitope retrieval with citrate buffer, pH 6.0 is recommended when using in immunohistochemistry.

Comment: Target Species of Antibody: Human

Restrictions: For Research Use only

Handling

Format: Liquid

Concentration: Lot specific

Buffer: 0.1 M Tris-glycine, pH 7.4, 150 mM sodium chloride, 0.05 % sodium azide

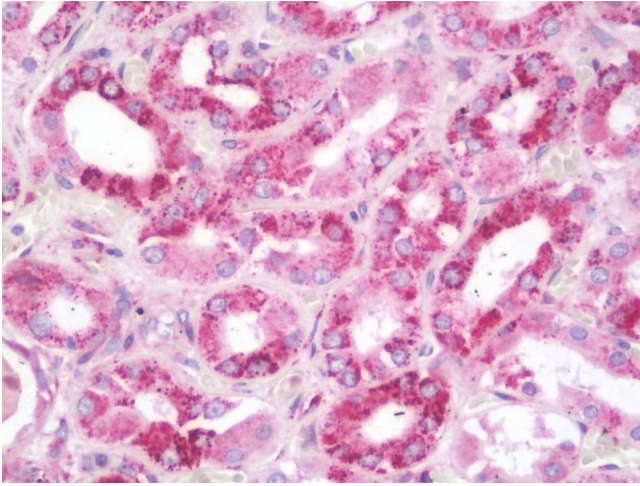
Preservative: Sodium azide

Precaution of Use: This product contains Sodium azide: a POISONOUS AND HAZARDOUS SUBSTANCE which should be handled by trained staff only.

Handling Advice: Aliquot to avoid repeated freezing and thawing.

Storage: 4 °C, -20 °C

Storage Comment: May be stored at 4°C for short-term only. Aliquot to avoid freeze-thaw cycles. Store at -20°C. Aliquots are stable for at least 1 year.



Immunohistochemistry

Image 1. Anti-PTCH1 / Patched antibody IHC staining of human kidney. Immunohistochemistry of formalin-fixed, paraffin-embedded tissue after heat-induced antigen retrieval. Antibody concentration 10 ug/ml.