



[Go to Product page](#)

Datasheet for ABIN1927972  
**anti-PTPLA antibody (AA 37-66)**

3 Images

### Overview

Quantity:	200 µL
Target:	PTPLA
Binding Specificity:	AA 37-66
Reactivity:	Human
Host:	Rabbit
Clonality:	Polyclonal
Conjugate:	This PTPLA antibody is un-conjugated
Application:	Western Blotting (WB), Immunohistochemistry (IHC), Immunohistochemistry (Paraffin-embedded Sections) (IHC (p))

### Product Details

Brand:	IHC-plus™
Specificity:	This PTPLA antibody is generated from rabbits immunized with a KLH conjugated synthetic peptide between 37-66 amino acids from the N-terminal region of human PTPLA.
Purification:	Protein A purified

### Target Details

Target:	PTPLA
Alternative Name:	PTPLA ( <a href="#">PTPLA Products</a> )
Background:	Name/Gene ID: HACD1 Subfamily: PTP-like

## Target Details

---

Family: Protein Phosphatase

Synonyms: HACD1, CAP, Cementum attachment protein, PTPLA

---

Gene ID: 9200

---

Pathways: [Regulation of long-term Neuronal Synaptic Plasticity](#)

---

## Application Details

---

Application Notes: Approved: IHC, IHC-P (1:100), WB (1:1000)

---

Comment: Target Species of Antibody: Human

---

Restrictions: For Research Use only

---

## Handling

---

Format: Liquid

---

Concentration: Lot specific

---

Buffer: PBS, 0.09 % sodium azide

---

Preservative: Sodium azide

---

Precaution of Use: This product contains Sodium azide: a POISONOUS AND HAZARDOUS SUBSTANCE which should be handled by trained staff only.

---

Storage: 4 °C, -20 °C

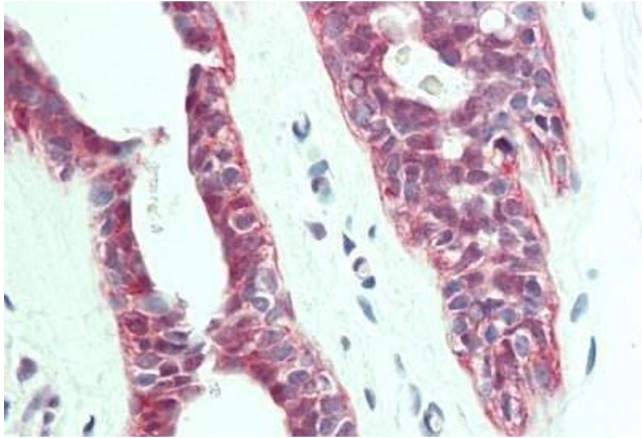
---

Storage Comment: Maintain refrigerated at 2-8°C for up to 6 months. For long term storage store at -20°C.

---

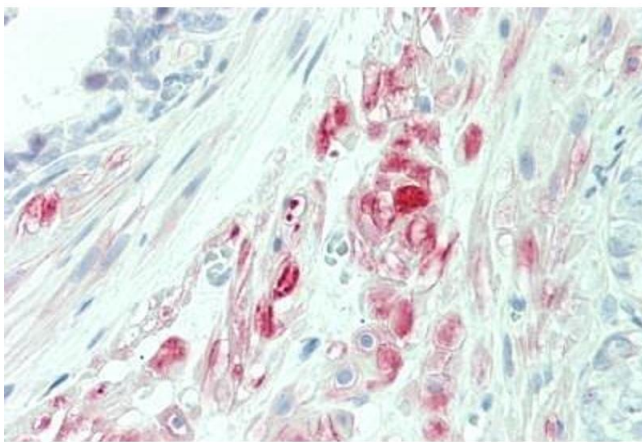
Expiry Date: 6 months

---



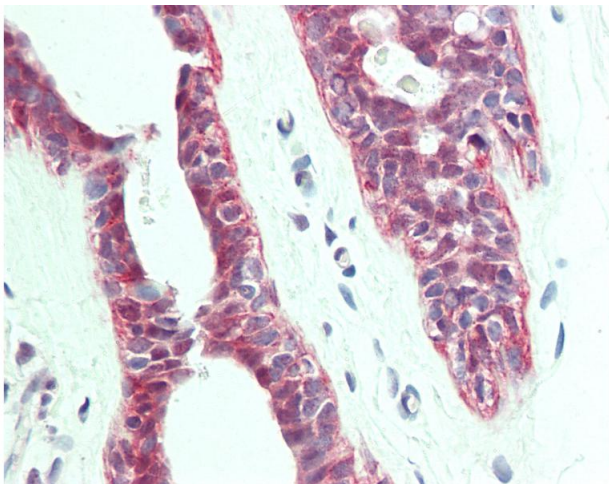
#### Immunohistochemistry

**Image 1.** Human Breast: Formalin-Fixed, Paraffin-Embedded (FFPE)



#### Immunohistochemistry

**Image 2.** Human Prostate: Formalin-Fixed, Paraffin-Embedded (FFPE)



#### Immunohistochemistry

**Image 3.** Anti-PTPLA antibody IHC staining of human breast. Immunohistochemistry of formalin-fixed, paraffin-embedded tissue after heat-induced antigen retrieval. Antibody dilution 1:100.