



[Go to Product page](#)

Datasheet for ABIN1928632  
**anti-RAB2A antibody (AA 148-212)**

1 Image

### Overview

Quantity:	100 µL
Target:	RAB2A
Binding Specificity:	AA 148-212
Reactivity:	Human, Dog, Rabbit, Monkey
Host:	Rabbit
Clonality:	Polyclonal
Conjugate:	This RAB2A antibody is un-conjugated
Application:	Western Blotting (WB), Immunohistochemistry (IHC), Immunohistochemistry (Paraffin-embedded Sections) (IHC (p))

### Product Details

Brand:	IHC-plus™
Immunogen:	Synthetic peptide corresponding to a region within amino acids 148 and 212 of RAB2A (SwissProt P61019). Percent identity by BLAST analysis: Human, Dog, Monkey, Rabbit (100%).  Type of Immunogen: Synthetic peptide
Isotype:	IgG
Specificity:	Human RAB2A / RAB2
Purification:	Immunoaffinity purified

## Target Details

---

Target:	RAB2A
Alternative Name:	RAB2A / RAB2 ( <a href="#">RAB2A Products</a> )
Background:	Name/Gene ID: RAB2A Subfamily: RAS oncogene Family: Ras GTPase superfamily IPR001806  Synonyms: RAB2A, Ras-related protein rab-2, RAB2, LHX, Ras-related protein Rab-2A
Gene ID:	5862
Pathways:	<a href="#">SARS-CoV-2 Protein Interactome</a>

## Application Details

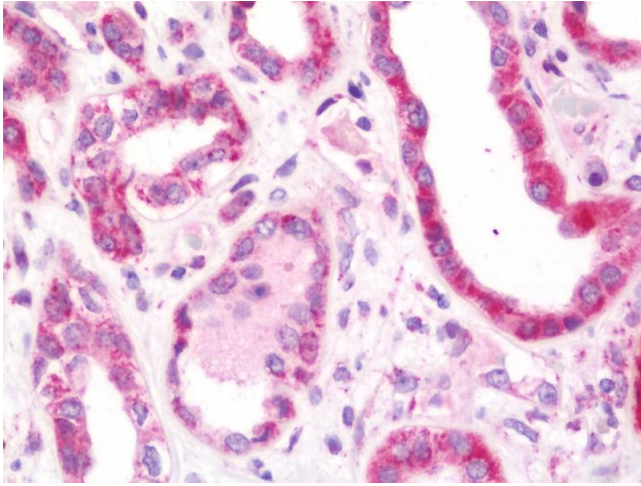
---

Application Notes:	Approved: IHC, IHC-P (7.5 µg/mL), WB (1:500 - 1:3000)  Usage: IHC-paraffin: Suggested antigen retrieval using heat mediated 10 mM Citrate buffer ( pH 6.0) or Tris-EDTA buffer ( pH 8.0).
Comment:	Target Species of Antibody: Human
Restrictions:	For Research Use only

## Handling

---

Format:	Liquid
Concentration:	Lot specific
Buffer:	0.1 M Tris-glycine, pH 7.0, 10 % glycerol, 0.01 % Thimerosal
Preservative:	Thimerosal (Merthiolate)
Precaution of Use:	This product contains Thimerosal (Merthiolate): a POISONOUS AND HAZARDOUS SUBSTANCE which should be handled by trained staff only.
Handling Advice:	Avoid multiple freeze-thaw cycles.
Storage:	-20 °C
Storage Comment:	Keep as concentrated solution. Aliquot and store at -20°C or below. Avoid multiple freeze-thaw cycles.



### Immunohistochemistry

**Image 1.** Anti-RAB2A / RAB2 antibody IHC staining of human kidney. Immunohistochemistry of formalin-fixed, paraffin-embedded tissue after heat-induced antigen retrieval. Antibody concentration 7.5 ug/ml.