



[Go to Product page](#)

Datasheet for ABIN1928653
anti-RAB3A antibody (C-Term)

1 Image

Overview

Quantity:	100 µg
Target:	RAB3A
Binding Specificity:	C-Term
Reactivity:	Human, Mouse, Rat
Host:	Goat
Clonality:	Polyclonal
Conjugate:	This RAB3A antibody is un-conjugated
Application:	Western Blotting (WB), Immunohistochemistry (IHC), Immunofluorescence (IF), Immunohistochemistry (Paraffin-embedded Sections) (IHC (p))

Product Details

Brand:	IHC-plus™
Immunogen:	Purified recombinant peptides derived from within residues 110 aa to the C-terminus of mouse Rab3a produced in E. coli. Type of Immunogen: Recombinant protein
Isotype:	IgG
Specificity:	Detects total Rab3 protein in the following human, rat and mouse whole cell lysates and transfected cells with GFP-Rab3a, GFP-Rab3b and GFP-Rab3c cds by Western blot.
Purification:	Immunoaffinity purified

Target Details

Target:	RAB3A
Alternative Name:	Rab3 (RAB3A Products)
Pathways:	Synaptic Membrane , Synaptic Vesicle Exocytosis , Dicarboxylic Acid Transport

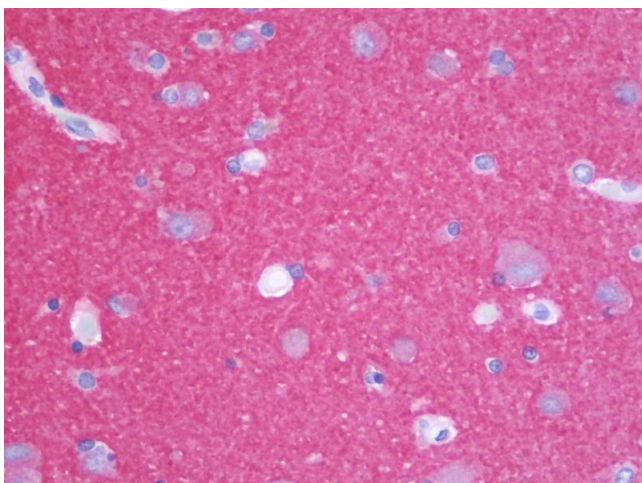
Application Details

Application Notes:	Approved: IF (1:50 - 1:250), IHC, IHC-P (5 µg/mL), WB (1:250 - 1:1000)
Comment:	Target Species of Antibody: Mouse
Restrictions:	For Research Use only

Handling

Format:	Liquid
Concentration:	Lot specific
Buffer:	PBS, 20 % glycerol, 0.05 % sodium azide.
Preservative:	Sodium azide
Precaution of Use:	This product contains Sodium azide: a POISONOUS AND HAZARDOUS SUBSTANCE which should be handled by trained staff only.
Handling Advice:	Avoid freeze-thaw cycles.
Storage:	4 °C,-20 °C
Storage Comment:	Store at 4°C short term. Aliquot and store at -20°C long term. Avoid freeze-thaw cycles.

Images



Immunohistochemistry

Image 1. Anti-RAB3 antibody IHC staining of human brain, cortex. Immunohistochemistry of formalin-fixed, paraffin-embedded tissue after heat-induced antigen retrieval. Antibody concentration 5 ug/ml.