

Datasheet for ABIN1929546
anti-A2BP1 antibody (AA 81-130)

2 Images

[Go to Product page](#)

Overview

Quantity:	50 µg
Target:	A2BP1
Binding Specificity:	AA 81-130
Reactivity:	Human, Mouse, Rat, Cow, Dog, Horse, Pig, Rabbit, Monkey, Bat
Host:	Rabbit
Clonality:	Polyclonal
Conjugate:	This A2BP1 antibody is un-conjugated
Application:	Western Blotting (WB), Immunohistochemistry (IHC), Immunohistochemistry (Paraffin-embedded Sections) (IHC (p))

Product Details

Brand:	IHC-plus™
Immunogen:	<p>Synthetic peptide located between aa81-130 of human RBFOX1 (Q9NWB1, NP_061193).</p> <p>Percent identity by BLAST analysis: Human, Chimpanzee, Gorilla, Orangutan, Monkey, Galago, Marmoset, Mouse, Rat, Elephant, Dog, Bovine, Bat, Rabbit, Horse, Pig, Opossum (100%), Gibbon, Panda, Guinea pig (92%), Turkey, Zebra finch, Chicken, Platypus (85%).</p> <p>Type of Immunogen: Synthetic peptide</p>
Specificity:	Human RBFOX1 / FOX1 / A2BP1
Purification:	Immunoaffinity purified

Target Details

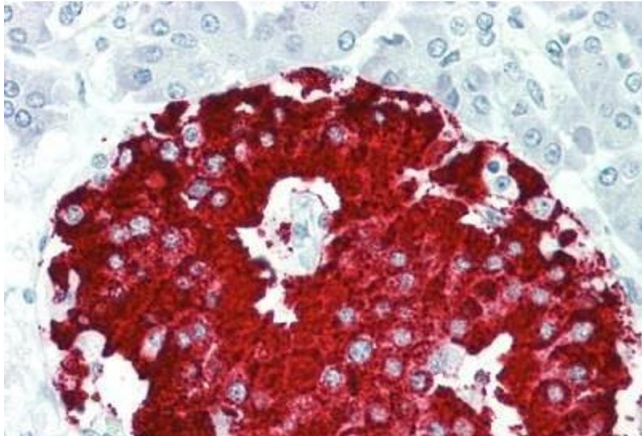
Target:	A2BP1
Alternative Name:	RBFOX1 / A2BP1 (A2BP1 Products)
Background:	Name/Gene ID: RBFOX1 Synonyms: RBFOX1, A2BP1, 2BP1, Ataxin 2-binding protein 1, A2BP, FOX-1, FOX1, Ataxin-2-binding protein 1, Fox-1 homolog A, HRNBP1
Gene ID:	54715
NCBI Accession:	NP_061193

Application Details

Application Notes:	Approved: IHC, IHC-P (10 µg/mL), WB (0.2 - 1 µg/mL) Usage: Western Blot: Suggested dilution at 1 µg/mL in 5 % skim milk / PBS buffer, and HRP conjugated anti-Rabbit IgG should be diluted in 1: 50,000 - 100,000 as secondary antibody.
Comment:	Target Species of Antibody: Human
Restrictions:	For Research Use only

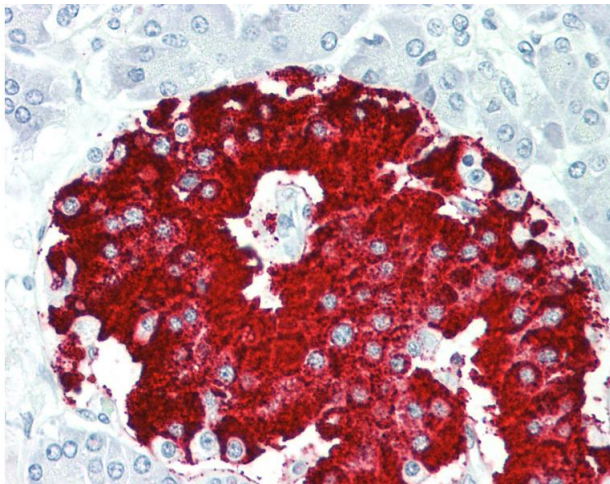
Handling

Format:	Lyophilized
Reconstitution:	Distilled water
Concentration:	Lot specific
Buffer:	Lyophilized from PBS with 2 % sucrose
Handling Advice:	Avoid repeat freeze-thaw cycles.
Storage:	4 °C, -20 °C
Storage Comment:	Long term: -20°C, the use of 50% glycerol is recommended if storing aliquots in -20°C for long term use (up to 1 year) Short term (less than 1 week): 4°C. Avoid freeze-thaw cycles.



Immunohistochemistry

Image 1. Human Pancreas: Formalin-Fixed, Paraffin-Embedded (FFPE)



Immunohistochemistry

Image 2. Anti-RBFOX1 / A2BP1 antibody IHC staining of human pancreas. Immunohistochemistry of formalin-fixed, paraffin-embedded tissue after heat-induced antigen retrieval. Antibody concentration 10 ug/ml. This image was taken for the unconjugated form of th ...