

Datasheet for ABIN1932695
anti-SAR1B antibody



[Go to Product page](#)

1 Image

Overview

Quantity:	50 µL
Target:	SAR1B
Reactivity:	Human
Host:	Mouse
Clonality:	Monoclonal
Conjugate:	This SAR1B antibody is un-conjugated
Application:	Western Blotting (WB), Immunohistochemistry (IHC), ELISA, Immunohistochemistry (Paraffin-embedded Sections) (IHC (p))

Product Details

Brand:	IHC-plus™
Immunogen:	Recombinant human SAR1B (1-198aa) purified from E. coli. Type of Immunogen: Recombinant protein
Clone:	AT1C7
Isotype:	IgG1 kappa
Specificity:	Human SARA2 / SAR1B
Purification:	Protein A purified

Target Details

Target:	SAR1B
---------	-------

Target Details

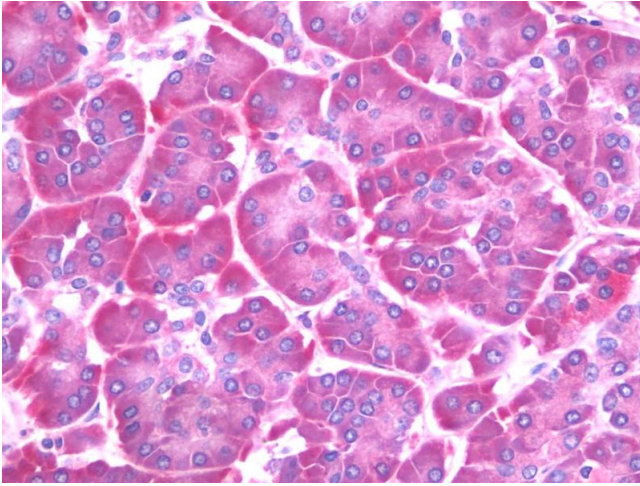
Alternative Name:	SARA2 / SAR1B (SAR1B Products)
Background:	Name/Gene ID: SAR1B Family: Ras GTPase superfamily IPR001806 Synonyms: SAR1B, ANDD, CMRD, GTP-binding protein SAR1b, GTP-binding protein Sara, SARB, SAR1a gene homolog 2, SARA2, GTBPB, GTP-binding protein B, SAR1 homolog B (<i>S. cerevisiae</i>)
Gene ID:	51128
Pathways:	Lipid Metabolism

Application Details

Application Notes:	Approved: ELISA, IHC, IHC-P (10 µg/mL), WB (1:1000)
Comment:	Target Species of Antibody: Human
Restrictions:	For Research Use only

Handling

Format:	Liquid
Concentration:	Lot specific
Buffer:	Supplied in PBS, pH 7.4, 10 % glycerol, 0.02 % sodium azide
Preservative:	Sodium azide
Precaution of Use:	This product contains Sodium azide: a POISONOUS AND HAZARDOUS SUBSTANCE which should be handled by trained staff only.
Handling Advice:	Avoid repeated freezing and thawing
Storage:	4 °C,-20 °C
Storage Comment:	Can be stored at 4°C. For long term storage, aliquot and store at -20°C. Avoid freeze-thaw cycles.



Immunohistochemistry

Image 1. Anti-SARA2 / SAR1B antibody IHC staining of human pancreas. Immunohistochemistry of formalin-fixed, paraffin-embedded tissue after heat-induced antigen retrieval. Antibody concentration 10 ug/ml.