

Datasheet for ABIN1934434  
**anti-SGPP1 antibody (AA 13-42)**

## 2 Images

[Go to Product page](#)

## Overview

Quantity:	200 µL
Target:	SGPP1
Binding Specificity:	AA 13-42
Reactivity:	Human
Host:	Rabbit
Clonality:	Polyclonal
Conjugate:	This SGPP1 antibody is un-conjugated
Application:	Western Blotting (WB), Immunohistochemistry (IHC), Immunohistochemistry (Paraffin-embedded Sections) (IHC (p))

## Product Details

Brand:	IHC-plus™
Specificity:	This SGPP1 antibody is generated from rabbits immunized with a KLH conjugated synthetic peptide between 13-42 amino acids from the N-terminal region of human SGPP1.
Purification:	Protein A purified

## Target Details

Target:	SGPP1
Alternative Name:	SGPP1 ( <a href="#">SGPP1 Products</a> )
Background:	Name/Gene ID: SGPP1 Family: Non-protein Phosphatase

## Target Details

Synonyms: SGPP1, HSPPase1, HSPP1, Sphingosine-1-phosphatase 1, SPPase1

Gene ID: 81537

## Application Details

Application Notes: Approved: IHC, IHC-P (1:10 - 1:100), WB (1:1000)

Comment: Target Species of Antibody: Human

Restrictions: For Research Use only

## Handling

Format: Liquid

Concentration: Lot specific

Buffer: PBS, 0.09 % sodium azide

Preservative: Sodium azide

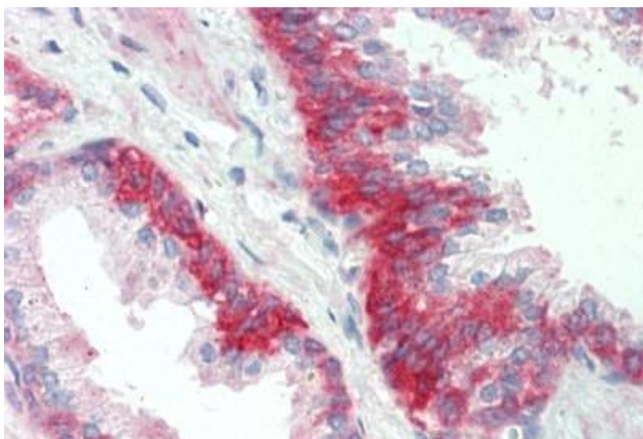
Precaution of Use: This product contains Sodium azide: a POISONOUS AND HAZARDOUS SUBSTANCE which should be handled by trained staff only.

Storage: 4 °C, -20 °C

Storage Comment: Maintain refrigerated at 2-8°C for up to 6 months. For long term storage store at -20°C.

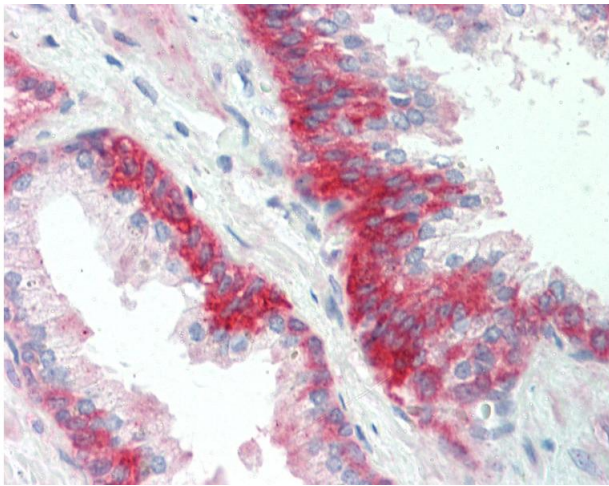
Expiry Date: 6 months

## Images



### Immunohistochemistry

**Image 1.** Human Prostate: Formalin-Fixed, Paraffin-Embedded (FFPE)



#### Immunohistochemistry

**Image 2.** Anti-SGPP1 antibody IHC staining of human prostate. Immunohistochemistry of formalin-fixed, paraffin-embedded tissue after heat-induced antigen retrieval.