

Datasheet for ABIN1935534  
**anti-SLC16A13 antibody (AA 398-426)**



[Go to Product page](#)

1 Image

## Overview

Quantity:	200 µL
Target:	SLC16A13
Binding Specificity:	AA 398-426
Reactivity:	Human, Mouse
Host:	Rabbit
Clonality:	Polyclonal
Conjugate:	This SLC16A13 antibody is un-conjugated
Application:	Western Blotting (WB), Immunohistochemistry (IHC), Immunohistochemistry (Paraffin-embedded Sections) (IHC (p))

## Product Details

Brand:	IHC-plus™
Specificity:	This SLC16A13 antibody is generated from rabbits immunized with a KLH conjugated synthetic peptide between 398-426 amino acids from the C-terminal region of human SLC16A13.
Purification:	Protein A purified

## Target Details

Target:	SLC16A13
Alternative Name:	SLC16A13 ( <a href="#">SLC16A13 Products</a> )
Background:	Name/Gene ID: SLC16A13

## Target Details

Synonyms: SLC16A13, MCT 13, MCT13, Monocarboxylate transporter 13

Gene ID: 201232

## Application Details

Application Notes: Approved: IHC, IHC-P (1:100), WB (1:1000)

Comment: Target Species of Antibody: Human

Restrictions: For Research Use only

## Handling

Format: Liquid

Concentration: Lot specific

Buffer: PBS, 0.09 % sodium azide

Preservative: Sodium azide

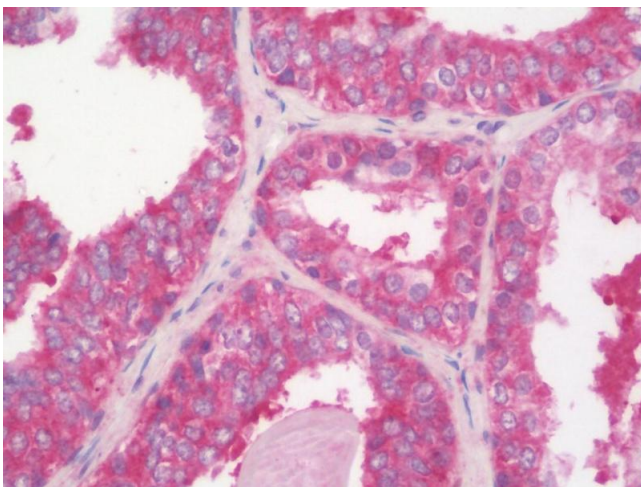
Precaution of Use: This product contains Sodium azide: a POISONOUS AND HAZARDOUS SUBSTANCE which should be handled by trained staff only.

Storage: 4 °C, -20 °C

Storage Comment: Maintain refrigerated at 2-8°C for up to 6 months. For long term storage store at -20°C.

Expiry Date: 6 months

## Images



### Immunohistochemistry

**Image 1.** Anti-SLC16A13 antibody IHC staining of human prostate. Immunohistochemistry of formalin-fixed, paraffin-embedded tissue after heat-induced antigen retrieval. Antibody dilution 1:100.