

Datasheet for ABIN1936033  
**anti-SLC38A2 antibody (AA 35-84)**

## 2 Images

[Go to Product page](#)

## Overview

Quantity:	50 µg
Target:	SLC38A2
Binding Specificity:	AA 35-84
Reactivity:	Human
Host:	Rabbit
Clonality:	Polyclonal
Conjugate:	This SLC38A2 antibody is un-conjugated
Application:	Western Blotting (WB), Immunohistochemistry (IHC), Immunohistochemistry (Paraffin-embedded Sections) (IHC (p))

## Product Details

Brand:	IHC-plus™
Immunogen:	Synthetic peptide located between aa35-84 of human SLC38A2 (Q96QD8, NP_061849). Percent identity by BLAST analysis: Human, Chimpanzee, Gorilla, Orangutan, Gibbon, Monkey (100%), Galago, Marmoset, Mouse, Rat, Hamster, Elephant, Panda, Dog, Bovine, Bat, Rabbit, Horse, Pig, Opossum, Guinea pig, Platypus (92%), Turkey, Zebra finch, Chicken, Lizard (85%).  Type of Immunogen: Synthetic peptide
Specificity:	Human SLC38A2
Purification:	Immunoaffinity purified

## Target Details

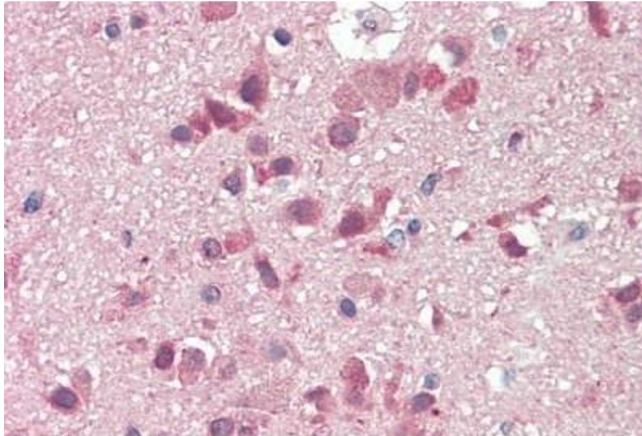
Target:	SLC38A2
Alternative Name:	SLC38A2 / SNAT2 ( <a href="#">SLC38A2 Products</a> )
Background:	Name/Gene ID: SLC38A2 Subfamily: Amino acid transporter Family: Transporter  Synonyms: SLC38A2, Amino acid transporter 2, Amino acid transporter A2, ATA2, KIAA1382, System A transporter 1, PRO1068, Protein 40-9-1, SNAT2
Gene ID:	54407
NCBI Accession:	<a href="#">NP_061849</a>
Pathways:	<a href="#">Dicarboxylic Acid Transport</a>

## Application Details

Application Notes:	Approved: IHC, IHC-P (5 µg/mL), WB (0.2 - 1 µg/mL)  Usage: Western Blot: Suggested dilution at 1 µg/mL in 5 % skim milk / PBS buffer, and HRP conjugated anti-Rabbit IgG should be diluted in 1: 50,000 - 100,000 as secondary antibody.
Comment:	Target Species of Antibody: Human
Restrictions:	For Research Use only

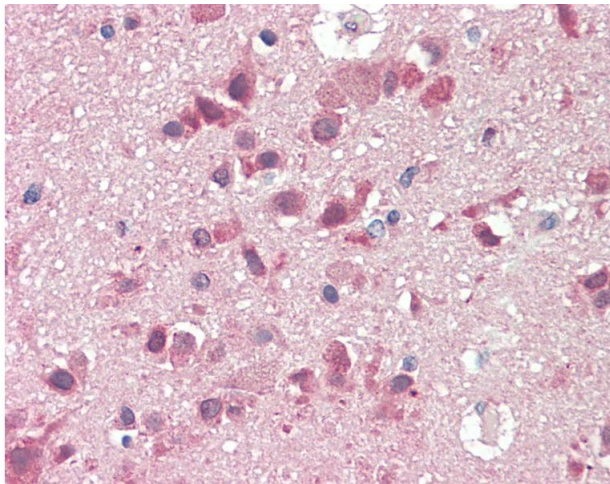
## Handling

Format:	Lyophilized
Reconstitution:	Distilled water
Concentration:	Lot specific
Buffer:	Lyophilized from PBS with 2 % sucrose
Handling Advice:	Avoid repeat freeze-thaw cycles.
Storage:	4 °C, -20 °C
Storage Comment:	Long term: -20°C, the use of 50% glycerol is recommended if storing aliquots in -20°C for long term use (up to 1 year)  Short term (less than 1 week): 4°C. Avoid freeze-thaw cycles.



#### Immunohistochemistry

**Image 1.** Human Brain, Cortex: Formalin-Fixed, Paraffin-Embedded (FFPE)



#### Immunohistochemistry

**Image 2.** Anti-SLC38A2 / SNAT2 antibody IHC staining of human brain, cortex. Immunohistochemistry of formalin-fixed, paraffin-embedded tissue after heat-induced antigen retrieval. Antibody concentration 5 ug/ml. This image was taken for the unconjugated form ...