



[Go to Product page](#)

Datasheet for ABIN1936728  
**anti-SMPD1 antibody (AA 391-419)**

1 Image

### Overview

Quantity:	200 µL
Target:	SMPD1
Binding Specificity:	AA 391-419
Reactivity:	Human
Host:	Rabbit
Clonality:	Polyclonal
Conjugate:	This SMPD1 antibody is un-conjugated
Application:	Western Blotting (WB), Immunohistochemistry (IHC), Flow Cytometry (FACS), Immunohistochemistry (Paraffin-embedded Sections) (IHC (p))

### Product Details

Brand:	IHC-plus™
Specificity:	This SMPD1 antibody is generated from rabbits immunized with a KLH conjugated synthetic peptide between 391-419 amino acids from the C-terminal region of human SMPD1.
Purification:	Protein A purified

### Target Details

Target:	SMPD1
Alternative Name:	SMPD1 / Acid Sphingomyelinase ( <a href="#">SMPD1 Products</a> )
Background:	Name/Gene ID: SMPD1 Family: Phosphodiesterase - Other

## Target Details

---

Synonyms: SMPD1, Acid sphingomyelinase, ASM, NPD, ASMASE

Gene ID: 6609

## Application Details

---

Application Notes: Approved: Flo (1:10 - 1:50), IHC, IHC-P (1:100), WB (1:1000)

Comment: Target Species of Antibody: Human

Restrictions: For Research Use only

## Handling

---

Format: Liquid

Concentration: Lot specific

Buffer: PBS, 0.09 % sodium azide

Preservative: Sodium azide

Precaution of Use: This product contains Sodium azide: a POISONOUS AND HAZARDOUS SUBSTANCE which should be handled by trained staff only.

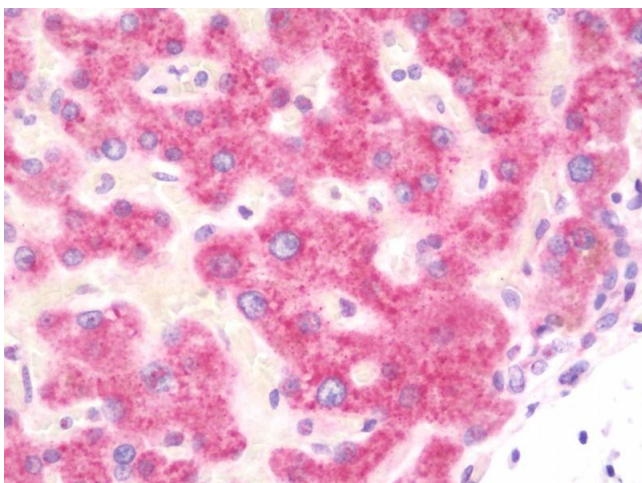
Storage: 4 °C, -20 °C

Storage Comment: Maintain refrigerated at 2-8°C for up to 6 months. For long term storage store at -20°C.

Expiry Date: 6 months

## Images

---



### Immunohistochemistry

**Image 1.** Anti-SMPD1 / Acid Sphingomyelinase antibody IHC staining of human liver. Immunohistochemistry of formalin-fixed, paraffin-embedded tissue after heat-induced antigen retrieval. Antibody dilution 1:100.