



[Go to Product page](#)

Datasheet for ABIN1942238

anti-TLX1 antibody (AA 163-191)

2 Images

Overview

Quantity:	200 µL
Target:	TLX1
Binding Specificity:	AA 163-191
Reactivity:	Mouse, Human
Host:	Rabbit
Clonality:	Polyclonal
Conjugate:	This TLX1 antibody is un-conjugated
Application:	Western Blotting (WB), Immunohistochemistry (Paraffin-embedded Sections) (IHC (p)), Immunohistochemistry (IHC)

Product Details

Brand:	IHC-plus™
Specificity:	This TLX1 antibody is generated from rabbits immunized with a KLH conjugated synthetic peptide between 163-191 amino acids from the Central region of human TLX1.
Purification:	Protein A purified

Target Details

Target:	TLX1
Alternative Name:	TLX1 / HOX11 (TLX1 Products)
Background:	Name/Gene ID: TLX1

Target Details

Synonyms: TLX1, Homeobox protein Hox-11, HOX11, T-cell leukemia homeobox 1, Proto-oncogene TCL-3, TCL3, T-cell leukemia, homeobox 1

Gene ID: 3195

Application Details

Application Notes: Approved: IHC, IHC-P (1:50), WB (1:1000)

Comment: Target Species of Antibody: Human

Restrictions: For Research Use only

Handling

Format: Liquid

Concentration: Lot specific

Buffer: PBS, 0.09 % sodium azide

Preservative: Sodium azide

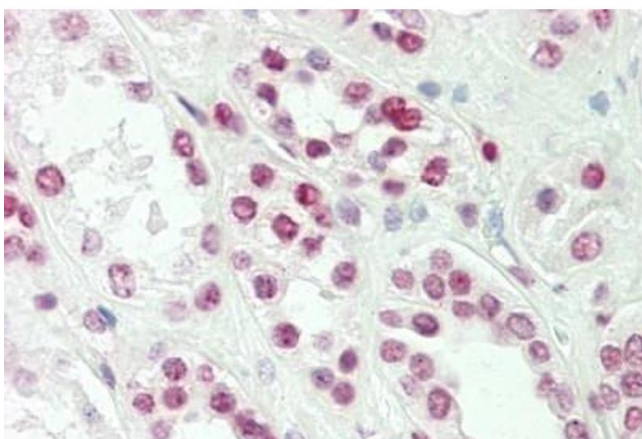
Precaution of Use: This product contains Sodium azide: a POISONOUS AND HAZARDOUS SUBSTANCE which should be handled by trained staff only.

Storage: 4 °C, -20 °C

Storage Comment: Maintain refrigerated at 2-8°C for up to 6 months. For long term storage store at -20°C.

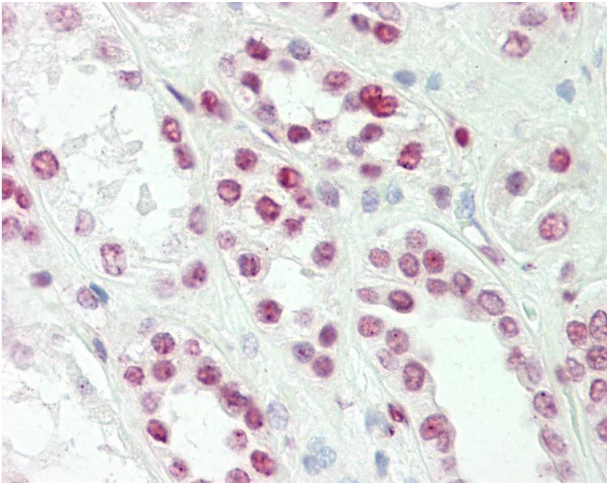
Expiry Date: 6 months

Images



Immunohistochemistry

Image 1. Human Kidney: Formalin-Fixed, Paraffin-Embedded (FFPE)



Immunohistochemistry

Image 2. Anti-TLX1 / HOX11 antibody IHC staining of human kidney. Immunohistochemistry of formalin-fixed, paraffin-embedded tissue after heat-induced antigen retrieval. Antibody dilution 1:50.