

Datasheet for ABIN1944744

**anti-FBXL17 antibody (C-Term, Isoform 2)**

## 5 Images

[Go to Product page](#)

## Overview

Quantity:	400 µL
Target:	FBXL17
Binding Specificity:	AA 262-297, C-Term, Isoform 2
Reactivity:	Human
Host:	Rabbit
Clonality:	Polyclonal
Conjugate:	This FBXL17 antibody is un-conjugated
Application:	Western Blotting (WB), Immunohistochemistry (Paraffin-embedded Sections) (IHC (p)), Flow Cytometry (FACS)

## Product Details

Immunogen:	This FBXL17 Isoform 2 antibody is generated from a rabbit immunized with a KLH conjugated synthetic peptide between 262-297 amino acids from the C-terminal region of human FBXL17 Isoform 2.
Clone:	RB47604
Isotype:	Ig Fraction
Purification:	This antibody is purified through a protein A column, followed by peptide affinity purification.

## Target Details

Target:	FBXL17
Alternative Name:	FBXL17 ( <a href="#">FBXL17 Products</a> )

## Target Details

Background:	Substrate-recognition component of the SCF (SKP1-CUL1-F-box protein)-type E3 ubiquitin ligase complex (By similarity).
Molecular Weight:	75695
Gene ID:	64839
UniProt:	<a href="#">Q9UF56</a>

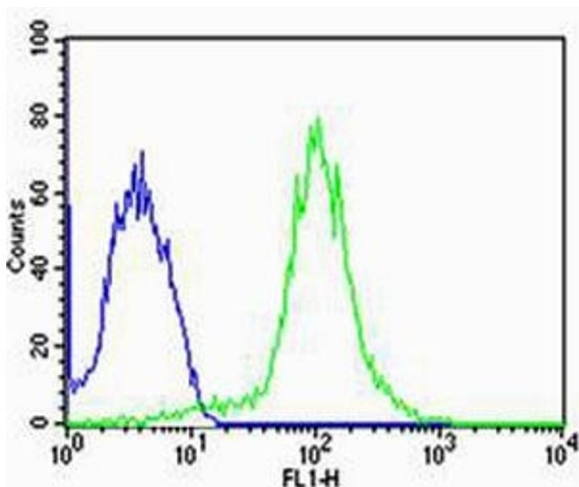
## Application Details

Application Notes:	WB: 1:1000. IHC-P: 1:25. IHC-P: 1:25. IHC-P: 1:25. FC: 1:25
Restrictions:	For Research Use only

## Handling

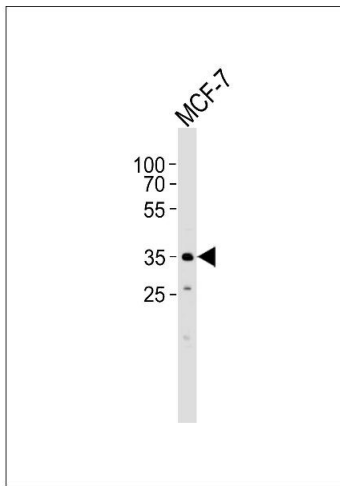
Format:	Liquid
Buffer:	Purified polyclonal antibody supplied in PBS with 0.09 % (W/V) sodium azide.
Preservative:	Sodium azide
Precaution of Use:	This product contains Sodium azide: a POISONOUS AND HAZARDOUS SUBSTANCE which should be handled by trained staff only.
Storage:	4 °C, -20 °C
Expiry Date:	6 months

## Images



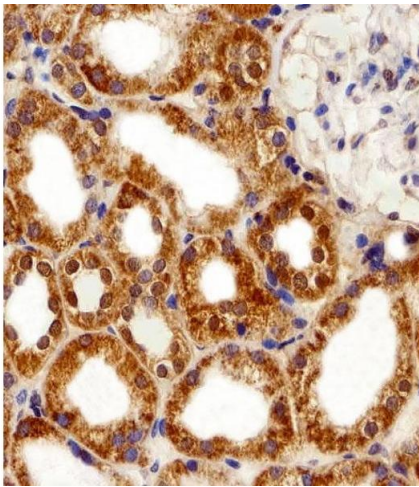
### Flow Cytometry

**Image 1.** Flow cytometric analysis of MCF-7 cells using FBXL17 Isoform 2 Antibody (C-term)(green, Cat(ABIN1944744 and ABIN2838540)) compared to an isotype control of rabbit IgG(blue). (ABIN1944744 and ABIN2838540) was diluted at 1:25 dilution. An Alexa Fluor® 488 goat anti-rabbit IgG at 1:400 dilution was used as the secondary antibody.



### Western Blotting

**Image 2.** Western blot analysis of lysate from MCF-7 cell line, using FBXL17 Isoform 2 Antibody (C-term) (ABIN1944744 and ABIN2838540). (ABIN1944744 and ABIN2838540) was diluted at 1:1000. A goat anti-rabbit IgG H&L(HRP) at 1:5000 dilution was used as the secondary antibody. Lysate at 35 µg.



### Immunohistochemistry (Paraffin-embedded Sections)

**Image 3.** Immunohistochemical analysis of paraffin-embedded H. kidney section using FBXL17 Isoform 2 Antibody (C-term) (ABIN1944744 and ABIN2838540). (ABIN1944744 and ABIN2838540) was diluted at 1:100 dilution. A peroxidase-conjugated goat anti-rabbit IgG at 1:400 dilution was used as the secondary antibody, followed by DAB staining.

Please check the [product details page](#) for more images. Overall 5 images are available for ABIN1944744.